

W/1/4 CORNER SEC. 15
T. 1 S. R. 45 E. B. M.
ROUND SIGN 827
INSTR. NO. 845804

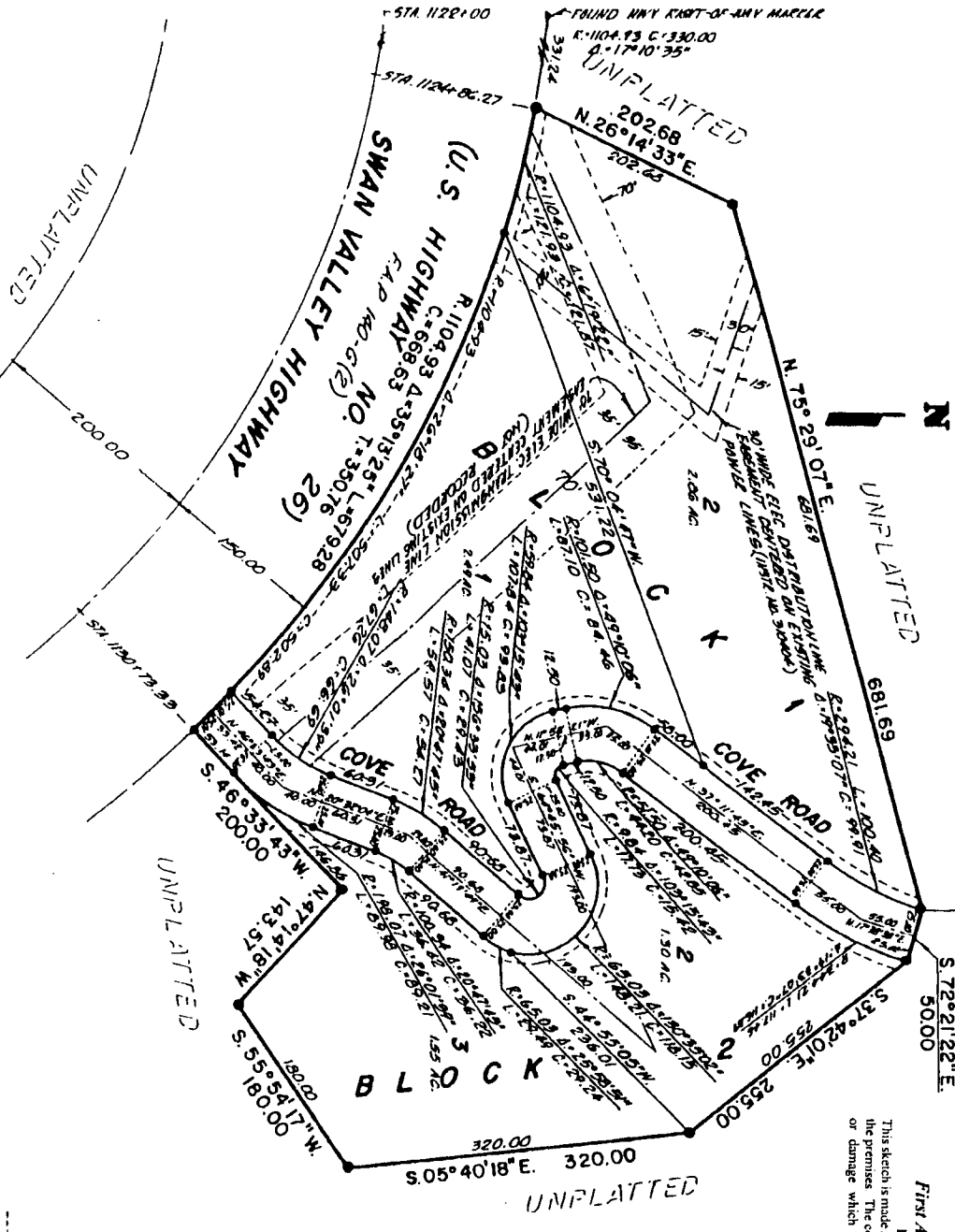
290.57
N 75° 29' 07" E 681.69
UNPLATTED
DIVISION NO. 1
BONNEVILLE COUNTY, IDAHO
BEING PART OF THE S. 1/2 OF SECTION 15, T. 1 S., R. 45 E., B. M.

E. 1/4 CORNER SEC. 15
T. 1 S. R. 45 E. B. M.
ROUND SIGN 827
INSTR. NO. 845804

THE COVE

4.67' 57" 44" N. 262.02

2269.45



This sketch is made solely for the purpose of assisting in locating the premises. The company assumes no liability for alleged loss or damage which may result from reliance on this map.



First American Title Company
Idaho Falls, Idaho 83404

LEGEND & NOTES

- 5/8" x 3/4" Steel Re-bar set with plastic cap stamped L.S. 827
- 1/2" x 24" Steel Re-bar set with plastic cap stamped L.S. 827

A Ten foot wide Utility Easement is hereby granted along the roadway through said lot. Other easements are as shown.

The County will not maintain roads until constructed to County Standards and officially accepted.

Private driveway approaches will be constructed as shown on the approved improvement drawings on file in the office of the County Engineer and drainage swales shall be maintained.

Access onto U.S. Highway No. 26 IS NOT ALLOWED from Lots 1 and 2. Block 1 except via the driveway shown on the drawings.