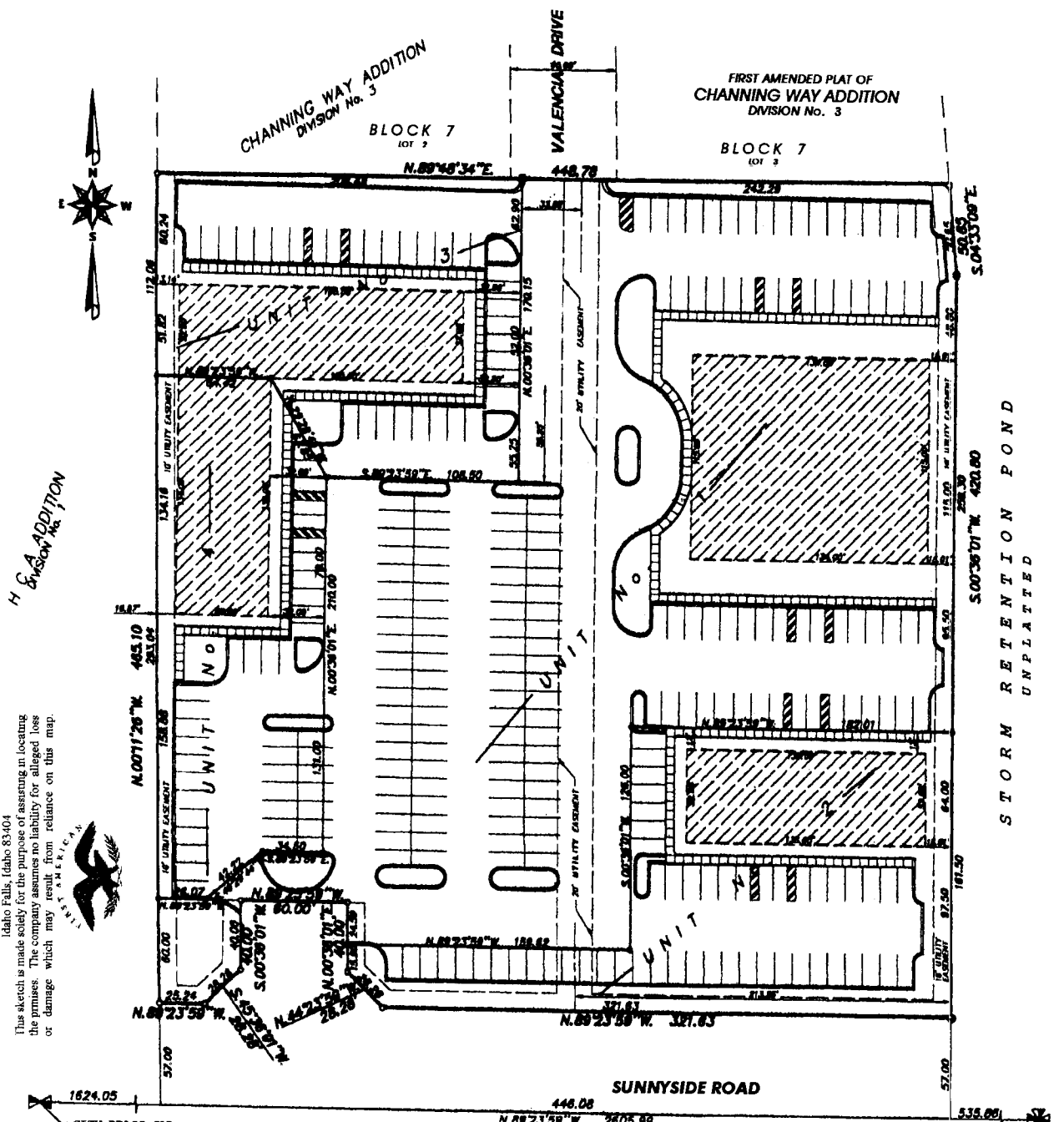


CREEKSIDE PLAZA

PUSUANT TO IDAHO FALLS CODE, TITLE 55, CHAPTER 15
CITY OF IDAHO FALLS, BONNEVILLE COUNTY, IDAHO



First American Title Company

Idaho Falls, Idaho 83404
This sketch is made solely for the purpose of assisting in locating the premises. The company assumes no liability for alleged loss or damage which may result from reliance on this map.



H & A ADDITION
Division No. 3



CITY BRASS CAP
S.W. CORNER SECTION 28
T. 2N. R. 38E. B.M.
C.P.F.F. BY L.S. 973
INSTR. No. 500235

SECTION LINE (BASIS OF BEARING)

CITY BRASS CAP
S.E. CORNER SECTION 28
T. 2N. R. 38E. B.M.
C.P.F.F. BY L.S. 973
INSTR. No. 500234

LEGEND & NOTES

- 1/2"x24" Steel Re-bar set with plastic caps stamped L.S. 8795
- 1/2" Steel Re-bar found with plastic caps stamped L.S. 827
- 5/8" Steel Re-bar found with plastic caps stamped L.S. 827
- Steel Re-bar found with aluminum caps stamped L.S. 2833
- ⊗ Chiseled X in flowline of curb at catch basin
- Utility easements are 10' wide
- ▨ Building pad boundaries within each unit

