

LOT NO.	BEARING	LENGTH	LONG CHORD
C-1	N 89°13'30" W	120.00	120.00
C-2	S 89°13'30" E	120.00	120.00
C-3	N 00°00'00" W	120.00	120.00
C-4	S 00°00'00" E	120.00	120.00
C-5	N 89°13'30" W	120.00	120.00
C-6	S 89°13'30" E	120.00	120.00
C-7	N 00°00'00" W	120.00	120.00
C-8	S 00°00'00" E	120.00	120.00
C-9	N 89°13'30" W	120.00	120.00
C-10	S 89°13'30" E	120.00	120.00
C-11	N 00°00'00" W	120.00	120.00
C-12	S 00°00'00" E	120.00	120.00
C-13	N 89°13'30" W	120.00	120.00
C-14	S 89°13'30" E	120.00	120.00
C-15	N 00°00'00" W	120.00	120.00
C-16	S 00°00'00" E	120.00	120.00
C-17	N 89°13'30" W	120.00	120.00
C-18	S 89°13'30" E	120.00	120.00
C-19	N 00°00'00" W	120.00	120.00
C-20	S 00°00'00" E	120.00	120.00
C-21	N 89°13'30" W	120.00	120.00
C-22	S 89°13'30" E	120.00	120.00
C-23	N 00°00'00" W	120.00	120.00
C-24	S 00°00'00" E	120.00	120.00
C-25	N 89°13'30" W	120.00	120.00
C-26	S 89°13'30" E	120.00	120.00
C-27	N 00°00'00" W	120.00	120.00
C-28	S 00°00'00" E	120.00	120.00
C-29	N 89°13'30" W	120.00	120.00
C-30	S 89°13'30" E	120.00	120.00
C-31	N 00°00'00" W	120.00	120.00
C-32	S 00°00'00" E	120.00	120.00
C-33	N 89°13'30" W	120.00	120.00
C-34	S 89°13'30" E	120.00	120.00
C-35	N 00°00'00" W	120.00	120.00
C-36	S 00°00'00" E	120.00	120.00
C-37	N 89°13'30" W	120.00	120.00
C-38	S 89°13'30" E	120.00	120.00
C-39	N 00°00'00" W	120.00	120.00
C-40	S 00°00'00" E	120.00	120.00
C-41	N 89°13'30" W	120.00	120.00
C-42	S 89°13'30" E	120.00	120.00
C-43	N 00°00'00" W	120.00	120.00
C-44	S 00°00'00" E	120.00	120.00
C-45	N 89°13'30" W	120.00	120.00
C-46	S 89°13'30" E	120.00	120.00
C-47	N 00°00'00" W	120.00	120.00
C-48	S 00°00'00" E	120.00	120.00
C-49	N 89°13'30" W	120.00	120.00
C-50	S 89°13'30" E	120.00	120.00
C-51	N 00°00'00" W	120.00	120.00

LEGEND

- BOUNDARY LINE
- SECTION CORNER
- CENTERLINE
- SET 1/2" x 24" IRON ROD WITH PLASTIC CAP STAMPED L.S. 6109
- EASEMENTS
- LOT LINE
- SET 5/8" x 30" IRON ROD WITH PLASTIC CAP STAMPED L.S. 6109
- FOUND 1/2" IRON ROD WITH PLASTIC CAP STAMPED L.S. 772
- GENERATOR OF SECTION 10, C.P. 180, 19815'

50' RIGHT OF WAY AND UTILITY EASEMENT

TEMPORARY TURNAROUNDS, RIGHT OF WAY AND UTILITY EASEMENT TO BE ABANDONED WHEN FUTURE ROADWAYS ARE DEDICATED.

CROW CREEK ESTATES
 DIVISION NO. 1
 PART OF THE NW 1/4 OF SECTION 10,
 T. 2N, R. 38E, B.M.
 BONNEVILLE COUNTY, IDAHO

IRRIGATION WATER RIGHTS

THE PROPERTY REMAINS IN THE PROGRESSIVE IRRIGATION DISTRICT AND TO SATISFY THE OBLIGATIONS OF SAID DISTRICT UNDER SUBSECTION (1)(b), A SIGNED WATER USER AND ASSASSMENT AGREEMENT SHALL BE ENTERED INTO BETWEEN THE WATER COMPANY INC., THE DEVELOPER AND THE IRRIGATION DISTRICT IS PENDING.

NOTES

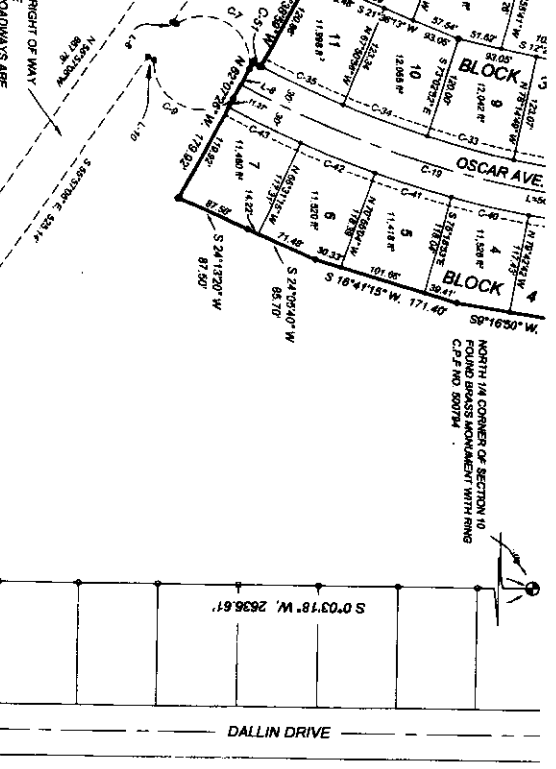
ALL BUILDINGS SHALL BE SET BACK A MINIMUM OF 30 FEET FROM ALL ROAD RIGHT-OF-WAY LINES THE COUNTY SHALL NOT MAINTAIN ROADS UNTIL CONSTRUCTED TO COUNTY STANDARDS AND OFFICIALLY ACCEPTED

LOTS SHOWN ON THIS PLAN ARE INCLUDED IN A LIGHTING DISTRICT AND WILL BE ASSESSED FOR OPERATION AND MAINTENANCE COSTS OF THE DISTRICT

A 15-FOOT WIDE PUBLIC UTILITY EASEMENT IS HEREBY RESERVED WITHIN EACH LOT ALONG ALL ROAD FRONTAGES

THIS SUBDIVISION LIES NORTH OF A COMMERCIAL ZONE WITH COMMERCIAL USES

LOT 1 BLOCK 9 IS TO BE USED FOR IRRIGATION AND FLOOD CONTROL



FOUND 1/4 CORNER OF SECTION 10, C.P. 180, 19815'

OSCAR AVE.

DALLIN DRIVE

POINT OF BEGINNING

SET 1/2" x 24" IRON ROD WITH PLASTIC CAP STAMPED L.S. 6109

SET 5/8" x 30" IRON ROD WITH PLASTIC CAP STAMPED L.S. 6109

FOUND 1/2" IRON ROD WITH PLASTIC CAP STAMPED L.S. 772

GENERATOR OF SECTION 10, C.P. 180, 19815'