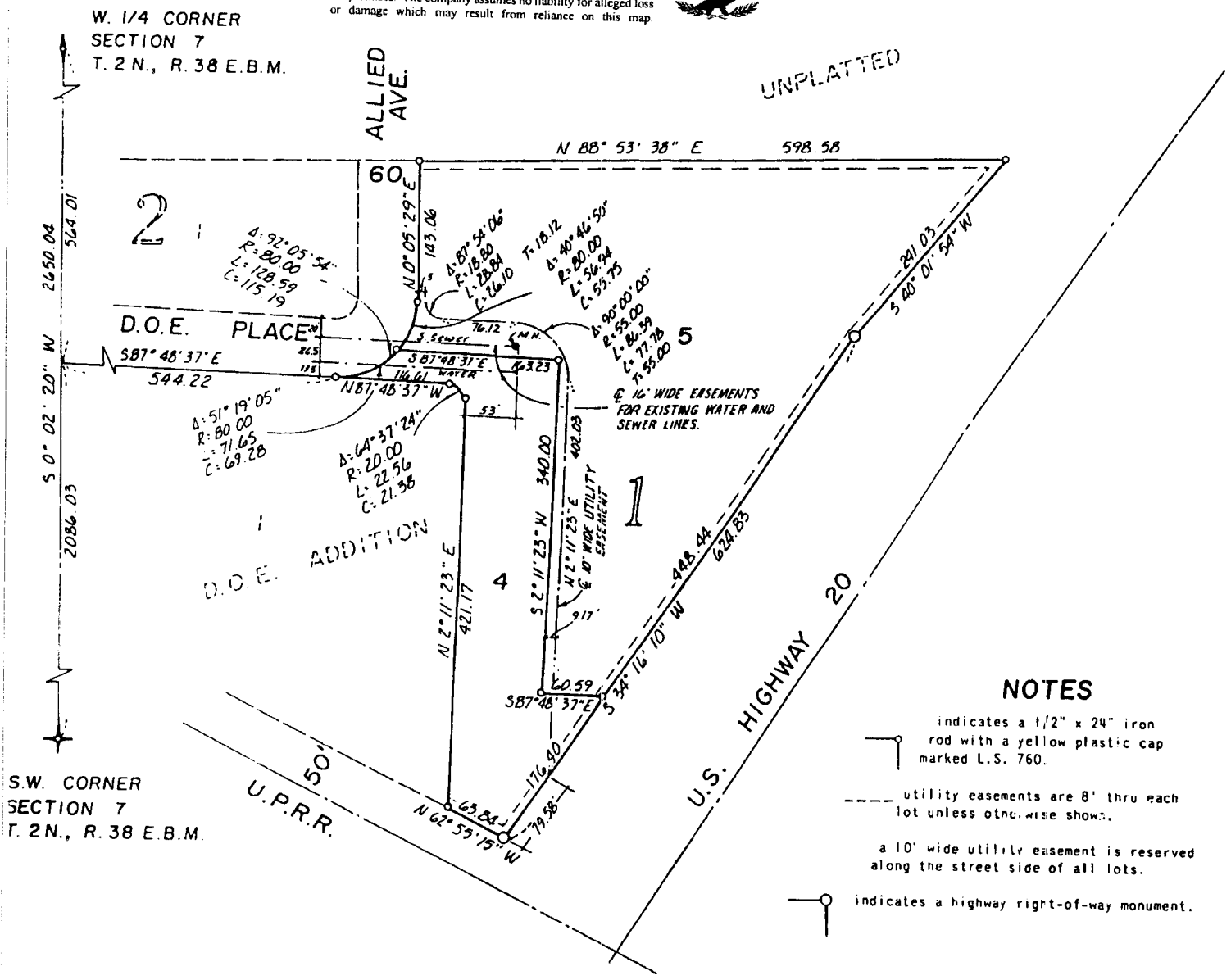



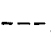
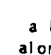
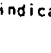
THE FIRST AMENDED PLAT OF LOTS 2 & 3, BLOCK 1 D.O.E. ADDITION TO THE CITY OF IDAHO FALLS, IDAHO PART OF THE S.W. 1/4 OF SECTION 7, T. 2 N., R. 38 E. B.M.



First American Title Company
Idaho Falls, Idaho 83404
This sketch is made solely for the purpose of assisting in locating the premises. The company assumes no liability for alleged loss or damage which may result from reliance on this map.



NOTES

-  indicates a 1/2" x 24" iron rod with a yellow plastic cap marked L.S. 760.
-  utility easements are 8' thru each lot unless otherwise shown.
-  a 10' wide utility easement is reserved along the street side of all lots.
-  indicates a highway right-of-way monument.