

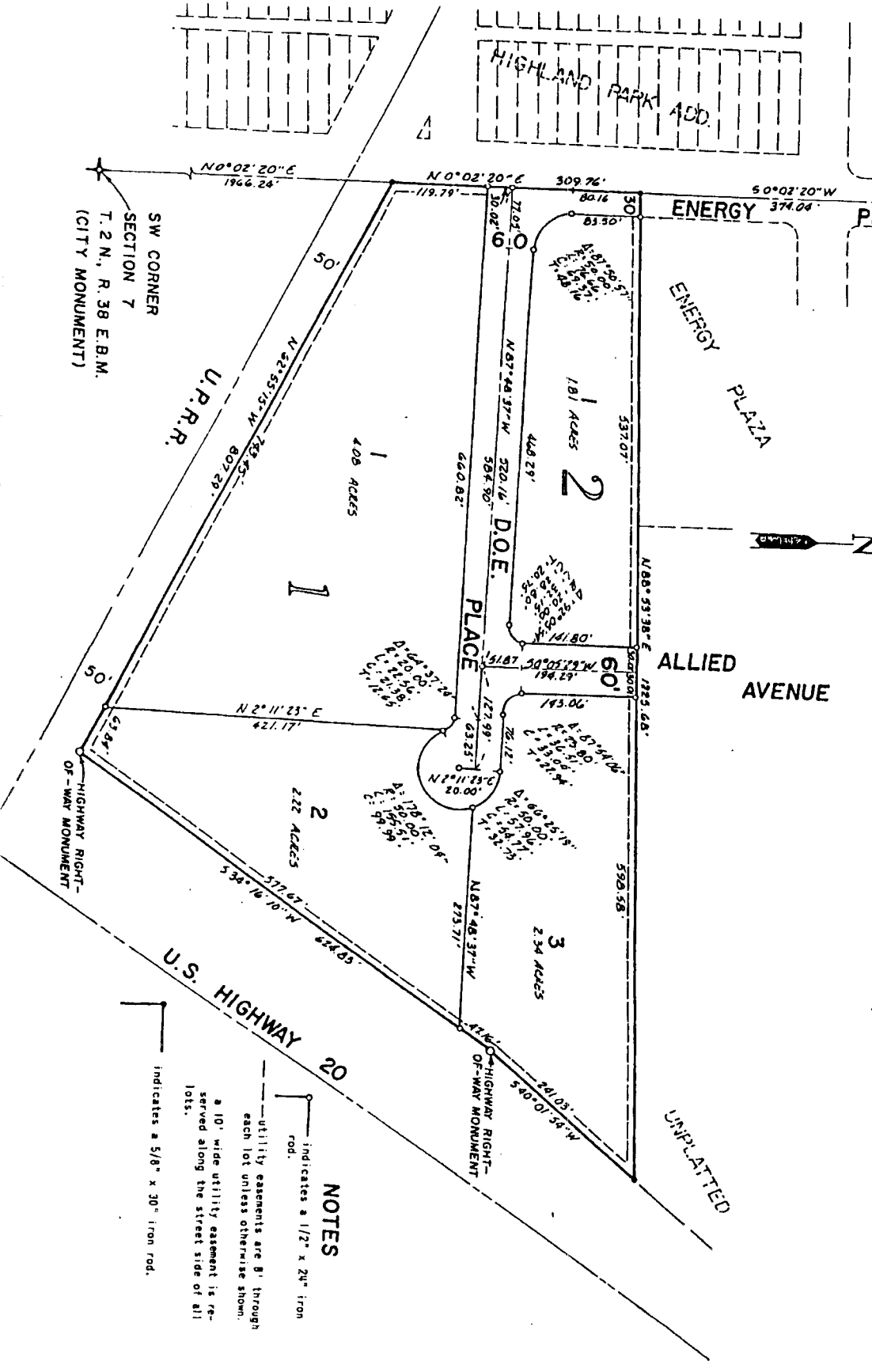
D.O.E. ADDITION

TO THE CITY OF IDAHO FALLS, IDAHO

PART OF THE S.W. 1/4 OF SECTION 7, T.2N., R.38E.B.M.

W 1/4 CORNER
SECTION 7
T.2N., R.38E.B.M.
(CITY MONUMENT)

First American Title Company
Idaho Falls, Idaho 83404
This sketch is made solely for the purpose of assisting in locating the premises. The company assumes no liability for alleged loss or damage which may result from reliance on this map.



NOTES

- indicates a 1/2" x 24" iron rod.
- utility easements are 6' through each lot unless otherwise shown.
- a 10' wide utility easement is reserved along the street side of all lots.
- indicates a 5/8" x 30" iron rod.

SW CORNER
SECTION 7
T.2N., R.38E.B.M.
(CITY MONUMENT)

