

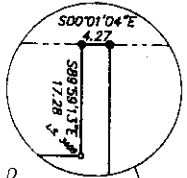
FOUND ALUMINUM CAP
N.W. COR. SECTION 22
T.1N. R.44E. B.M.
CPR# BY L.S.827
MSTR. No.952796

DEER TRACK RANCH

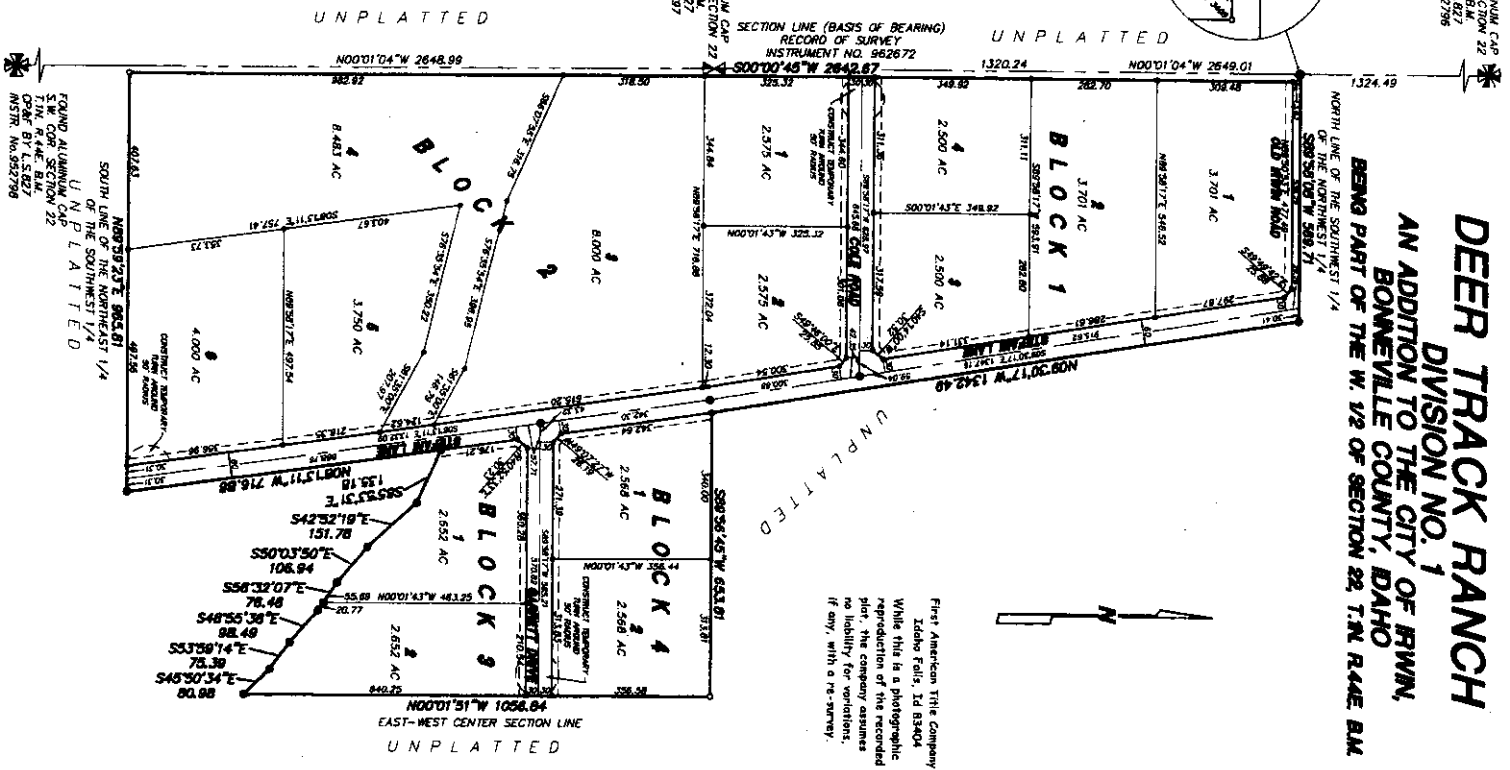
DIVISION NO. 1

AN ADDITION TO THE CITY OF IRWIN, BONNEVILLE COUNTY, IDAHO

BEG. PART OF THE W. 1/2 OF SECTION 22, T.1N. R.44E. B.M.



FOUND ALUMINUM CAP
N.W. COR. SECTION 22
T.1N. R.44E. B.M.
CPR# BY L.S.827
MSTR. No.952797



First American Title Company
Idaho Falls, ID 83404
While this is a photographic
reproduction of the recorded
plat, the company assumes
no liability for variations,
if any, with a re-survey.

LEGEND & NOTES

- 5/8" x 3/8" Show nail set with plastic cap stamped L.S.8795
- 1/2" x 24" Show nail set with plastic cap stamped L.S.8795
- 1/2" Show nail board with cap stamped L.S.827 unless noted otherwise. See Record of Survey instrument No. 690672

A ribbon bar with Plastic (Only) Easement & Utility Grant/Assignment along all road frontages within each lot. All other public utility easements are shown from wide utility marked distances.

The section numbers 14000 (413 acre average for area)

According to the FEMA Flood Plain/FIRM map Bonneville County Community Parcel No. 160071-0270-C. Elevation 114.

1981. The subdivision lies in Zone C-uses of Internal flooding.