

DESBOROUGH PLACE SUBDIVISION

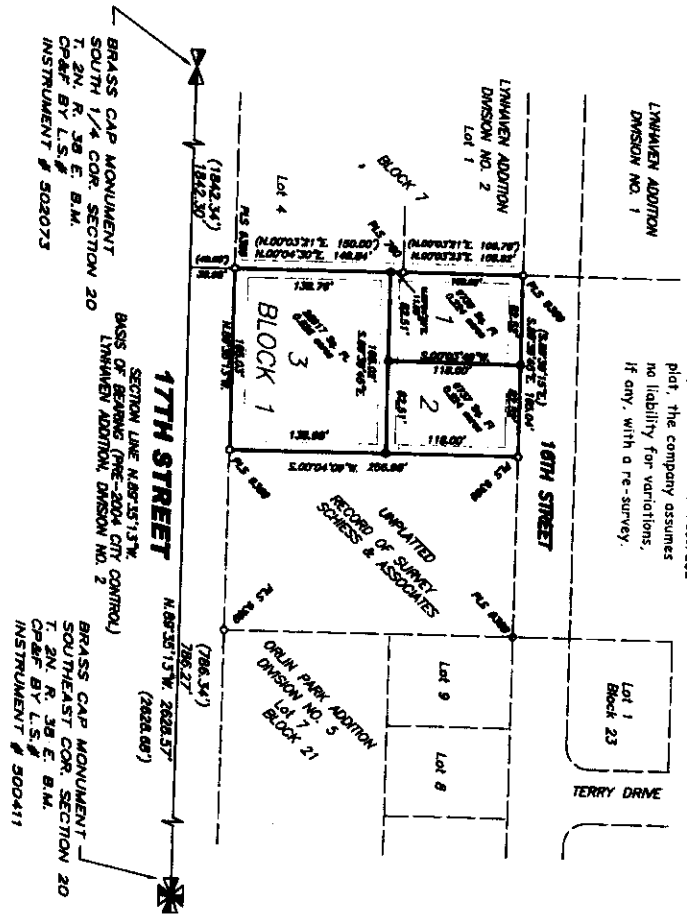
DIVISION NO. 1

AN ADDITION TO THE CITY OF IDAHO FALLS

BONNEVILLE COUNTY, IDAHO

PART OF THE SE 1/4, SE 1/4 SECTION 20, T. 2 N. R. 38 E., B.M.

First American Title Company
 Idaho Falls, Id 83404
 While this is a photographic
 reproduction of the recorded
 plat, the company assumes
 no liability for variations,
 if any, with a re-survey.



LEGEND & NOTES

- SET 5/8" x 30" Steel Re-bar
- SET 1/2" x 3/4" Steel Re-bar WITH PLASTIC CAP STAMPED L.S.# 10844
- Found 1/2" Iron Rod

Double Utility Encasements are 12 feet wide and 6 feet high when located between adjacent lots.

(786.34) RECORD BEARING OR DISTANCE

