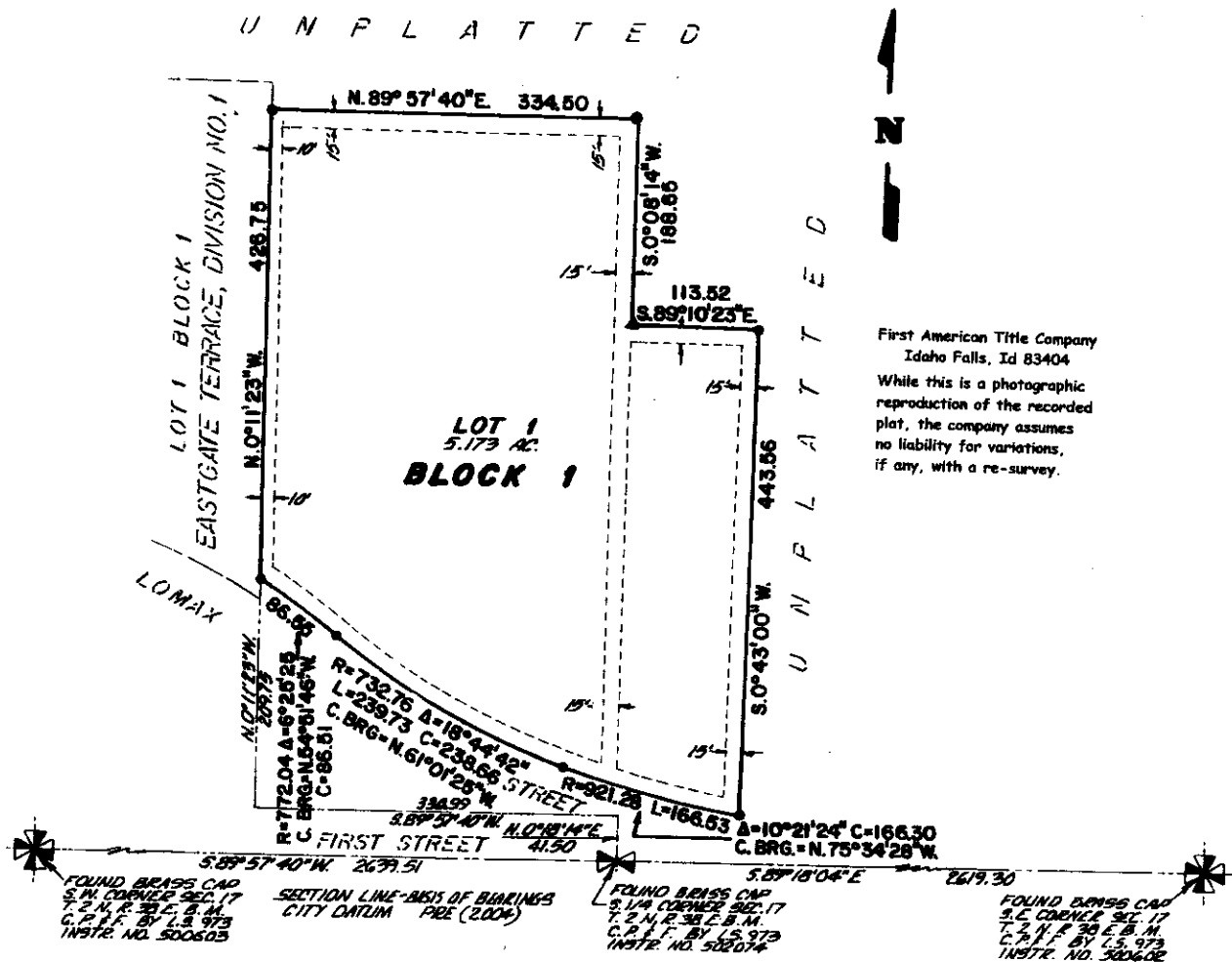


DIAMOND PARK ADDITION DIVISION NO. 1

TO THE CITY OF IDAHO FALLS, BONNEVILLE COUNTY, IDAHO IN THE S. 1/2 OF SECTION 17 T. 2 N. R. 38 E., B.M.

U N P L A T T E D



First American Title Company
Idaho Falls, Id 83404
While this is a photographic
reproduction of the recorded
plat, the company assumes
no liability for variations,
if any, with a re-survey.

IRRIGATION WATER RIGHTS

Water rights and assessment obligations are not appurtenant to the lands included within this plat, lots within this subdivision will not receive a water right.

LEGEND & NOTES

- 5/8" x 30" Steel rebar set with plastic cap stamped L.S. 8795
- 1/2" Dred rebar found with cap
- A fifteen foot wide Public Utility Easement is hereby granted along the road frontage within the lot. Other public utility easements are as noted.
- ▲ SET MAGNETIC NAIL WITH SHIMMER STAMPED L.S. 8795