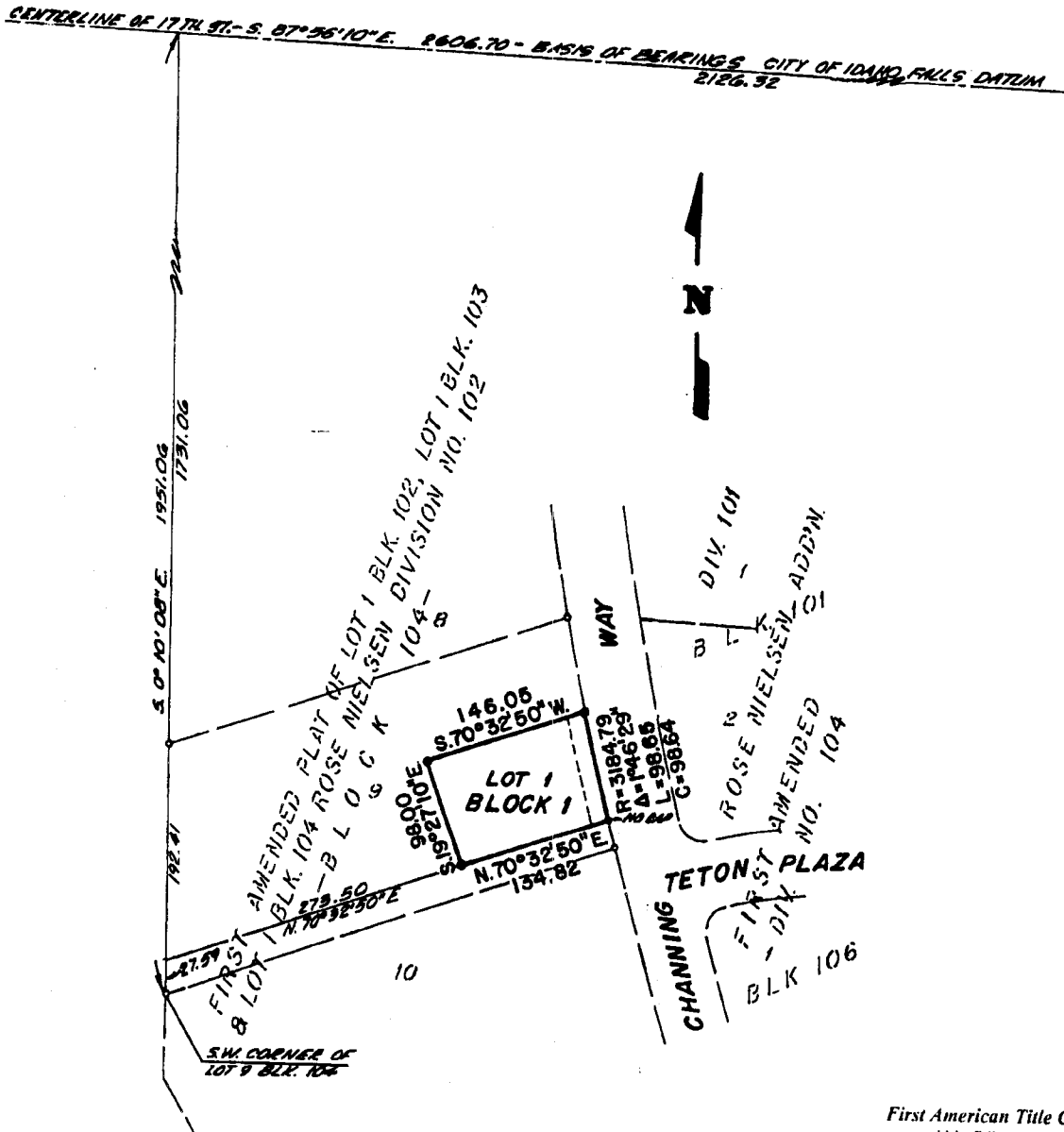


DIANNE T. JOHNSON ADDITION DIVISION NO. 1

TO THE CITY OF IDAHO FALLS, BONNEVILLE COUNTY, IDAHO
BEING A REPLAT OF A PART OF LOT 9, BLOCK 104 OF THE FIRST AMENDED PLAT OF
BLOCK 102, LOT 1 BLOCK 103 & LOT 1 BLOCK 104, ROSE NIELSEN ADDITION, DIVISION NO. 102
IN THE S.W. 1/4 N.E. 1/4 SECTION 28, T. 2 N. R. 38 E. B.M.



LEGEND & NOTES

- 5/8" x 30" Steel Re-bar set with plastic cap stamped L.S. 8795
 - 1/2" Steel Re-bar found with caps stamped L.S. 780 unless noted otherwise
- A fifteen foot wide Utility Easement is hereby granted along the road frontage within the lot. All other easements are as noted.

First American Title Company
Idaho Falls, Idaho 83404

This sketch is made solely for the purpose of assisting in locating the premises. The company assumes no liability for alleged loss or damage which may result from reliance on this map.

