

SECOND AMENDED PLAT

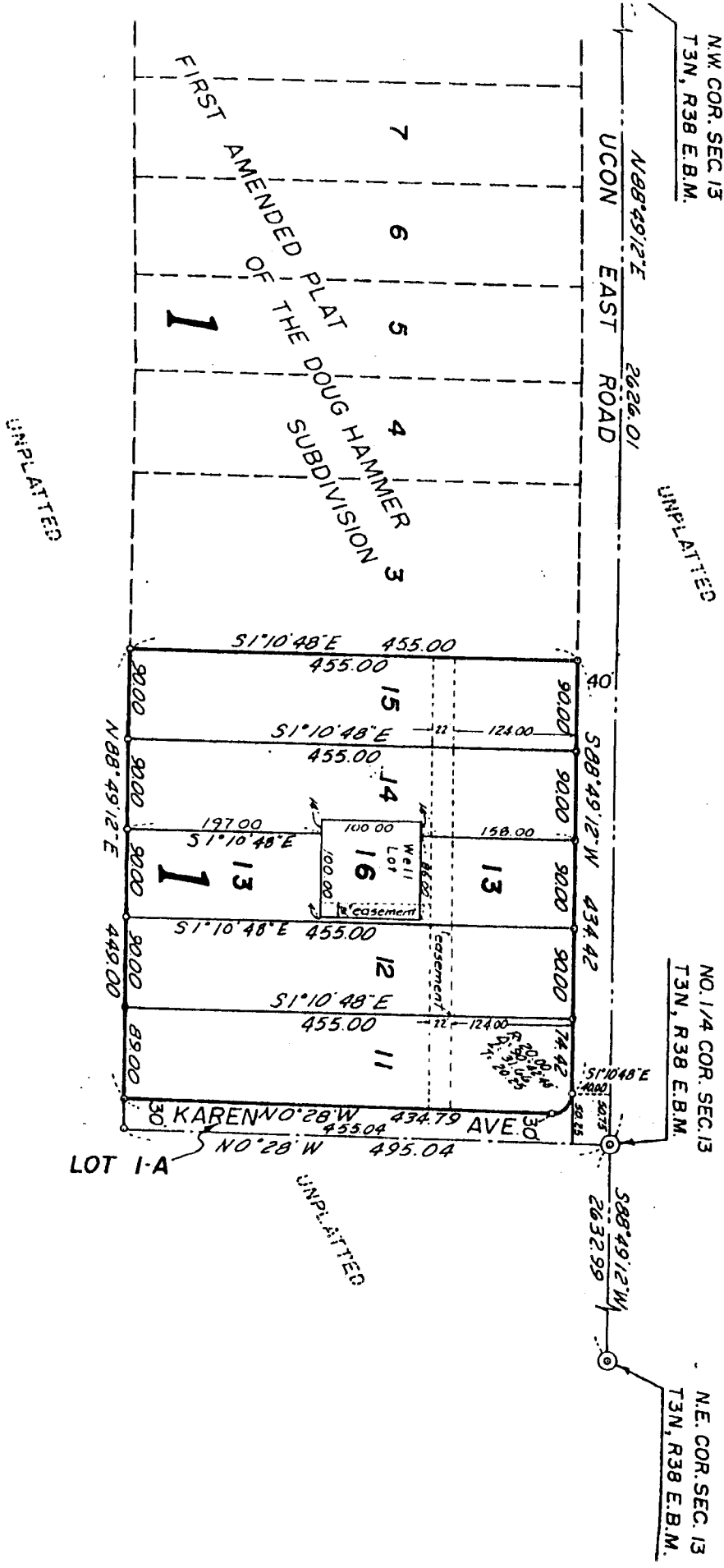
(OF LOTS 1 & 2 BLOCK 1 OF THE FIRST AMENDED PLAT OF)
DOUG HAMMER SUBDIVISION

BONNEVILLE COUNTY, IDAHO
Part of N.E. 1/4 Sec. 13, T3N, R38 E.B.M.

First American Title Company

Idaho Falls, Idaho 83404

This sketch is made solely for the purpose of assisting in locating the premises. The company assumes no liability for alleged loss or damage which may result from reliance on this map.



LOT 1-A