

DRY CANYON ESTATES DIVISION NO. 1

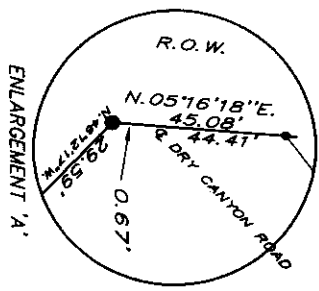
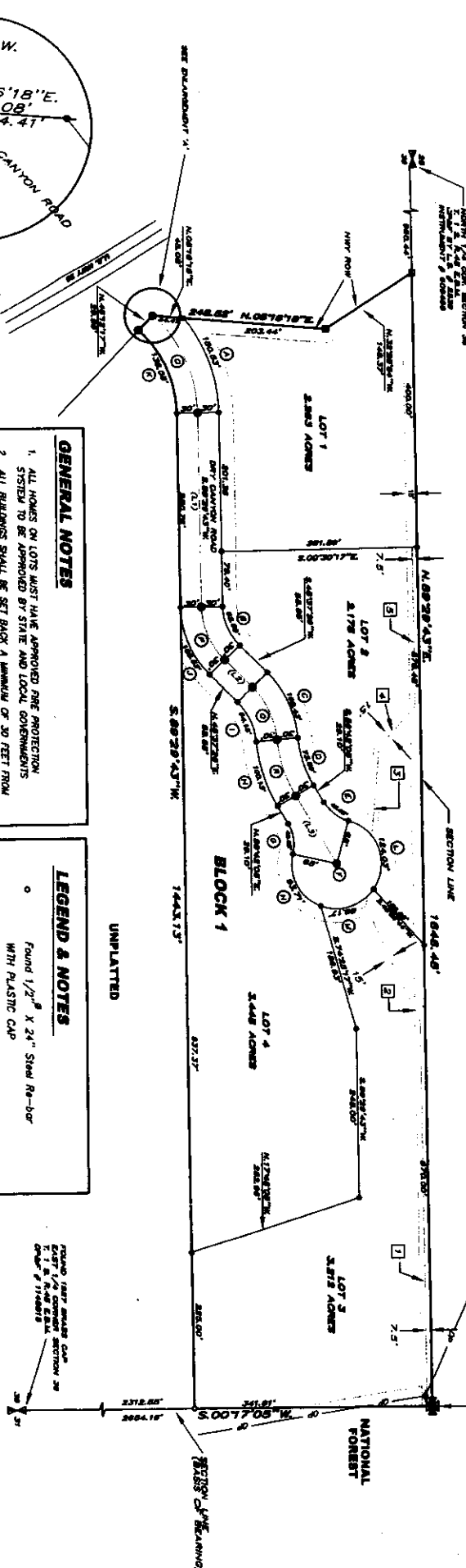
PART OF NORTHEAST 1/4 OF SECTION 36, TOWNSHIP 1 SOUTH, RANGE 45
EAST OF THE BOISE MERIDIAN, BONNEVILLE COUNTY, IDAHO

CURVE #	R	Δ	C	L
1	230.00'	37°29'59"	147.86'	150.53'
2	21.74'	43°21'17"	61.07'	62.59'
3	153.24'	39°29'08"	103.38'	105.43'
4	166.39'	25°20'30"	72.89'	73.59'
5	60.00'	43°25'44"	44.80'	46.02'
6	65.00'	28°53'28"	53.60'	50.91'
7	60.00'	43°25'44"	44.80'	46.02'
8	228.38'	25°20'30"	99.31'	100.13'
9	93.24'	39°29'08"	62.89'	64.15'
10	141.74'	43°21'17"	109.80'	108.53'
11	170.00'	46°31'44"	134.29'	136.05'
12	65.00'	108°18'38"	106.08'	124.02'
13	65.00'	75°37'38"	80.00'	81.17'
14	65.00'	82°28'14"	85.80'	83.71'
15	200.00'	45°12'18"	152.11'	151.48'
16	111.74'	43°21'17"	83.48'	85.56'
17	133.24'	39°29'08"	93.13'	94.72'
18	158.38'	25°20'30"	66.13'	66.81'

LINE	BEARING	DISTANCE
1	S 89°28'43"W	627.71'
2	S 89°28'43"W	168.18'
3	N 69°28'28"W	231.14'
4	N 48°28'28"W	78.87'
5	S 89°28'43"W	298.75'

LINE	BEARING	DISTANCE
L1	N 69°28'28"W	230.79'
L2	N 48°28'28"W	82.80'
L3	N 69°28'28"W	115.85'

First American Title Company
 Idaho Falls, ID 83404
 While this is a photographic reproduction of the recorded plat, the company assumes no liability for omissions, if any, with a re-survey.



- ### GENERAL NOTES
- ALL HOMES ON LOTS MUST HAVE APPROVED FIRE PROTECTION SYSTEMS TO BE APPROVED BY STATE AND LOCAL GOVERNMENTS.
 - ALL BUILDINGS SHALL BE SET BACK A MINIMUM OF 30 FEET FROM ALL ROAD RIGHTS-OF-WAY LINES.
 - A 20 FOOT WIDE PUBLIC UTILITY EASEMENT IS HEREBY RESERVED WITHIN EACH LOT ALONG ALL ROAD FRONTAGES. THE PROPERTY USE AND EASEMENTS IS HEREBY RESERVED FOR THE RECORD FOR PUBLIC UTILITIES OR FOR ANY OTHER USES AS DESIGNATED ON THE PLAT.
 - THE COUNTY WILL NOT MAINTAIN ROADS UNLESS CONSTRUCTED TO COUNTY STANDARDS AND OFFICIALLY ACCEPTED.
 - DRAINAGE SWALES (GUTTERS), PRIVATE DRIVEWAYS AND SIDEWALK APPROACHES WILL BE CONSTRUCTED AND MAINTAINED WITH THE CORRECT CROSS-SECTION AS SHOWN ON THE APPROVED AMPLIFIED DRAWINGS ON FILE IN THE BONNEVILLE COUNTY PUBLIC WORKS DEPT.
 - LOT 1 BLOCK 1 WILL NOT HAVE DIRECT ACCESS ONTO U.S. HIGHWAY 26.

- ### LEGEND & NOTES
- Found 1/2" x 3/4" Steel Re-bar WITH PLASTIC CAP STAMPED P.L.S.# 10844
 - SET 1/2" x 24" Steel Re-bar WITH PLASTIC CAP STAMPED P.L.S.# 10844
 - Set 5/8" x 24" Steel Re-bar WITH PLASTIC CAP STAMPED P.L.S.# 10844
 - 20' SNOW & PUBLIC UTILITY EASEMENT AS SHOWN