

NORTH 1/4 CORNER  
SEC. 4 T. 1 N., R. 36 E. 8M  
(INST. NO. 499849)

# THE DUNES AT SAND CREEK

## DIVISION NO. 1

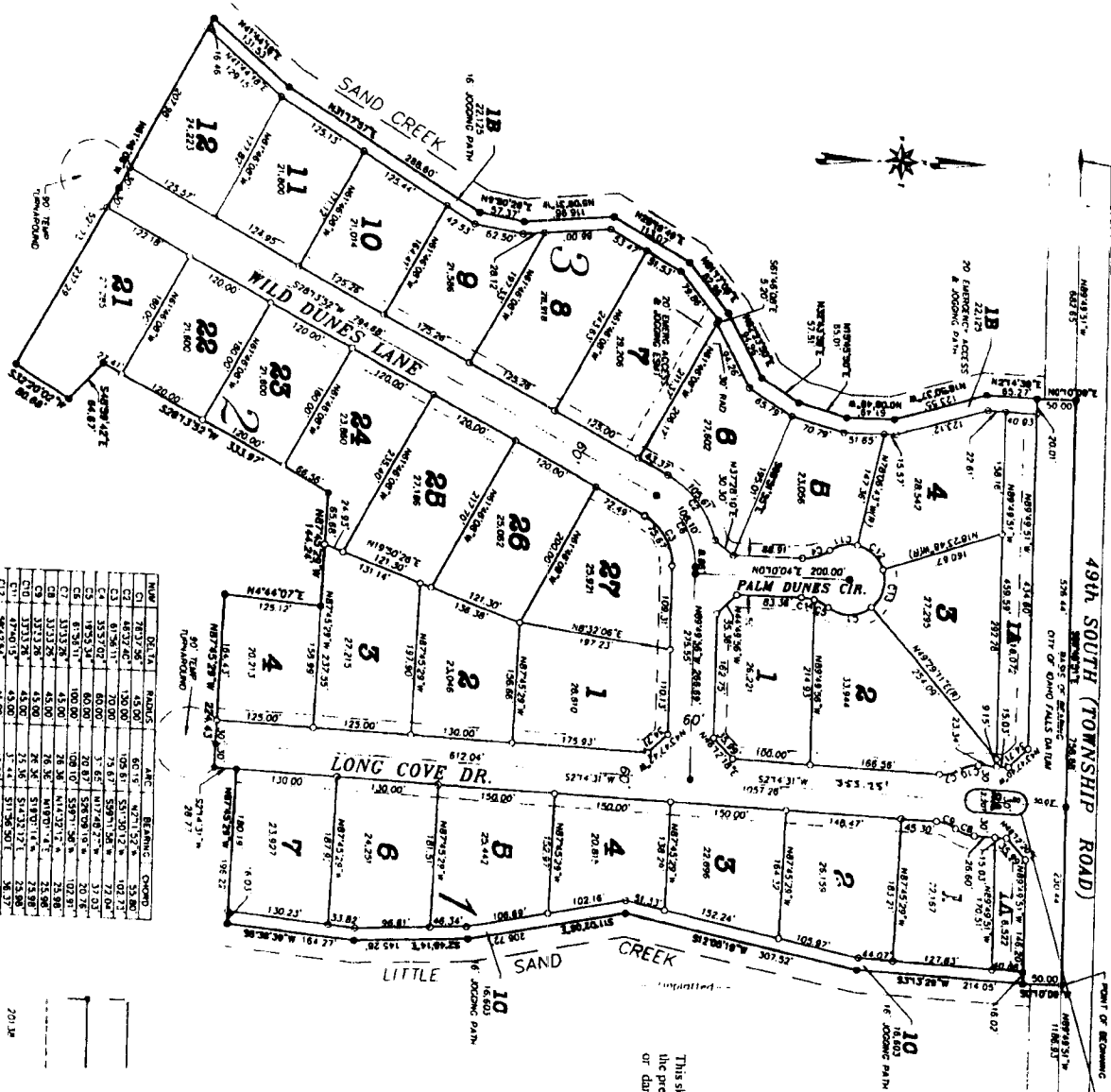
### CITY OF IDAHO FALLS, BONNEVILLE COUNTY, IDAHO

PART OF THE S. 1/4 OF SEC. 4, T. 1 N., R. 36 E. 8M.

LOT 2A  
BLOCK 1

DETAIL

NORTHEAST CORNER  
SEC. 4 T. 1 N., R. 36 E. 8M  
(INST. NO. 499849)



NO.	AREA	ACRES	PERCENT	CHORD
C1	2637.96	45.00	6.11	128.80
C2	4637.40	130.00	106.81	517.01
C3	6136.11	107.00	15.87	598.15
C4	3337.07	60.00	3.65	117.40
C5	8324.41	160.00	20.87	587.00
C6	8324.41	160.00	20.87	587.00
C7	3133.28	45.00	26.30	118.07
C8	3133.28	45.00	26.30	118.07
C9	3133.28	45.00	26.30	118.07
C10	3133.28	45.00	26.30	118.07
C11	3133.28	45.00	26.30	118.07
C12	3133.28	45.00	26.30	118.07
C13	3133.28	45.00	26.30	118.07
C14	1871.28	30.00	15.18	587.00
C15	1871.28	30.00	15.18	587.00

**NOTES**

- 1. markers 1/2" - 24" nor. or sout. w. in
- 2. yellow plastic cap marked 1-5 72
- 3. markers 1/2" - 30" nor. or sout. w. in
- 4. yellow plastic cap marked 1-5 72
- 5. 6" wide utility and 3" water - easement
- 6. reserved along the street line 1/2' - 5'
- 7. markers 1/2" or 3/4" - 1/2" - 1/2"

This sketch is made solely for the purpose of assisting in locating the permits. The company assumes no liability for alleged loss or damage which may result from reliance on this map.



First American Title Company  
Idaho Falls, Idaho 83404