

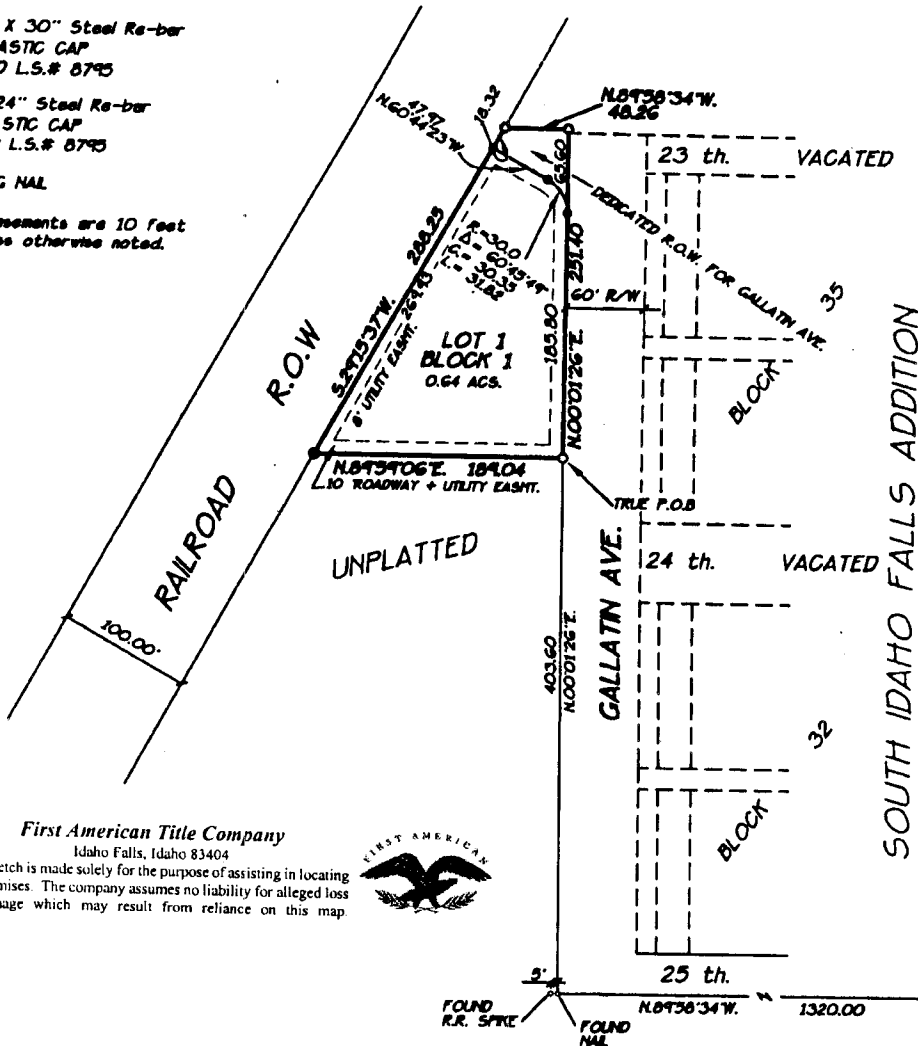
# THE DUNKLEY GALLATIN ADDITION DIVISION No. 1

AN ADDITION TO THE CITY OF IDAHO FALLS, BONNEVILLE COUNTY, IDAHO  
BEING PART OF THE N.E.1/4 OF SECTION 26, T.2N., R.37 E., B.M.

**LEGEND + NOTES**

- FOUND 1/2" IRON ROD WITH PLASTIC CAP STAMPED L.S. 827 UNLESS OTHERWISE NOTED
- 5/8" Ø X 30" Steel Re-bar WITH PLASTIC CAP STAMPED L.S.# 8795
- 1/2" Ø 24" Steel Re-bar WITH PLASTIC CAP STAMPED L.S.# 8795
- SET MAG NAIL

--- Utility Easements are 10 feet wide unless otherwise noted.



**First American Title Company**  
Idaho Falls, Idaho 83404

This sketch is made solely for the purpose of assisting in locating the premises. The company assumes no liability for alleged loss or damage which may result from reliance on this map.



E. 1/4 CORNER SEC. 25  
T. 2 N. R. 37 E. B.M.  
C.P.M. BY L.S.# 973  
INSTR. NO. 500326

BRASS CAP MON.  
S.E. CORNER SEC. 25  
T. 2 N. R. 37 E. B.M.  
C.P.M. BY L.S.# 973  
INSTR. NO. 502078