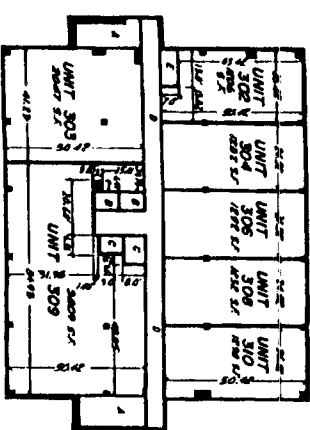
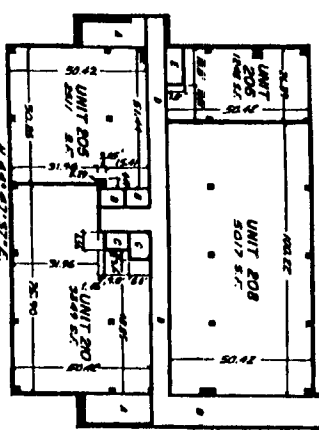


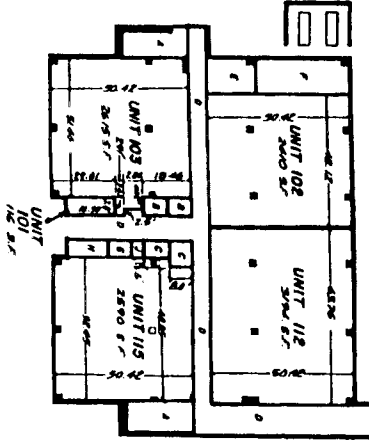
THIRD FLOOR



SECOND FLOOR



FIRST FLOOR



**FIRST AMENDED PLAT OF THE  
E.I.R.M.C. OFFICE BUILDING**  
AN IDAHO CONDOMINIUM PROJECT  
LOCATED IN LOT 1, BLOCK 1, IDAHO FALLS REGIONAL MEDICAL CENTER,  
AN ADDITION TO THE CITY OF IDAHO FALLS, BONNEVILLE COUNTY, IDAHO  
LYING IN THE S.E. 1/4 OF SECTION 28, T. 2 N., R. 38 E., S. 4.

*First American Tile Company*  
Idaho Falls, Idaho 83404  
This sketch is made solely for the purpose of assisting in locating the premises. The company assumes no liability for alleged loss or damage which may result from reliance on this map.



LEGEND OF COMMON AREAS

- A) Staircase
  - B) Elevator
  - C) Corridor
  - D) Utility
  - E) Mechanical
  - F) Janitor's closet
  - G) Storage
  - H) Other
- NOTE: Area units will show 1/8" = 1'-0"

BASEMENT FLOOR

