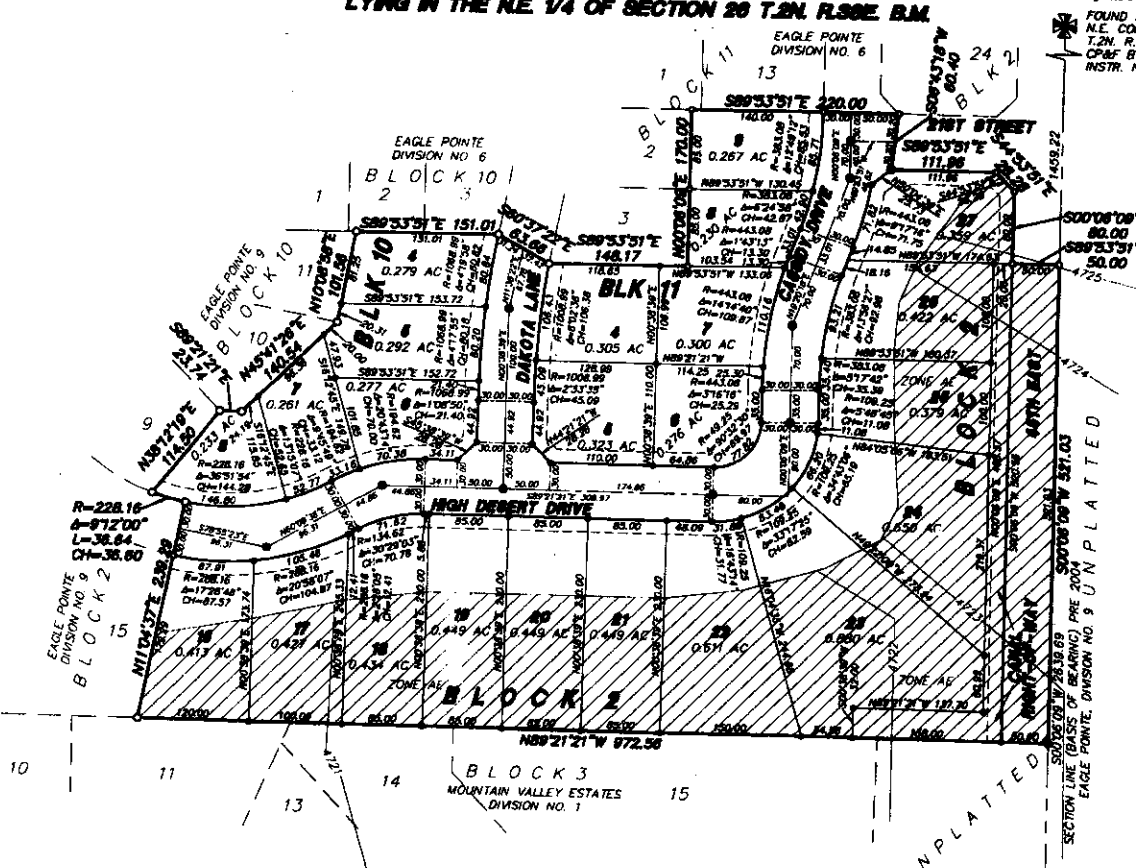


EAGLE POINTE DIVISION NO. 10

**AN ADDITION TO THE CITY OF AMMON,
BONNEVILLE COUNTY, IDAHO**

**BEING A REPLAT OF LOTS 11 AND 12, BLOCK 1, LOT 51, BLOCK 2 AND A PORTION OF CASSIDY DRIVE,
EAGLE POINTE, DIVISION NO. 6, AN ADDITION TO THE CITY OF AMMON, BONNEVILLE COUNTY, IDAHO
LYING IN THE N.E. 1/4 OF SECTION 26 T.2N. R.30E. B.M.**



LEGEND & NOTES

- 5/8" x 3/8" Steel re-bar set with plastic cap stamped L.S.8786
- 1/2" x 24" Steel re-bar set with plastic cap stamped L.S.8785
- 5/8" Steel re-bar found with plastic caps stamped L.S.8785
- 1/2" Steel re-bar found with plastic caps stamped L.S.8785

--- Utility easements are 15 feet wide along all roadways. All others are ten feet wide unless otherwise noted.

Special flood hazard area marked by 100 year flood - Zone AE

Base flood elevation line. Elevation in feet NGVD 1929

This division contains 23 lots with an average lot size of 0.39 acres.

Utilities shall have the right to install, maintain, and operate their equipment above and below ground and all other related facilities within the Public Utility Easements identified on this plat map as may be necessary or desirable in providing utility services within and without the lots identified herein, including the right of access to such facilities and the right to require removal of any obstructions including structures, trees and vegetation that may be placed within the PUE. The utility may require the lot owner to remove all structures within the PUE at the lot owner's expense, or the utility may remove such structures at the lot owner's expense. At no time may any permanent structures be placed within the PUE or any other obstruction which interferes with the use of the PUE without the prior written approval of the utilities with facilities in the PUE.

First American Title Company
Idaho Falls, Id 83404

While this is a photographic reproduction of the recorded plat, the company assumes no liability for variations, if any, with a re-survey.

FOUND P.K. NAIL
E 1/4 COR. SECTION 26
T.2N. R.30E. B.M.
C&P BY L.S. 827
INSTR. No. 823793

FOUND ALUMINUM CAP
N.E. COR. SECTION 26
T.2N. R.30E. B.M.
C&P BY L.S. 760
INSTR. No. 621880

689.44

UNPLATTED

4726

