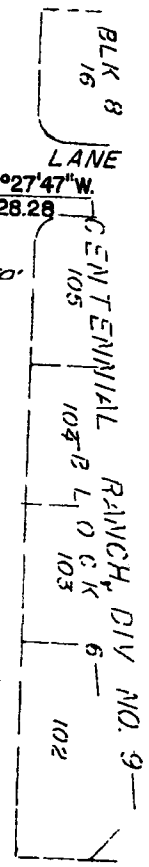


LEGEND & NOTES

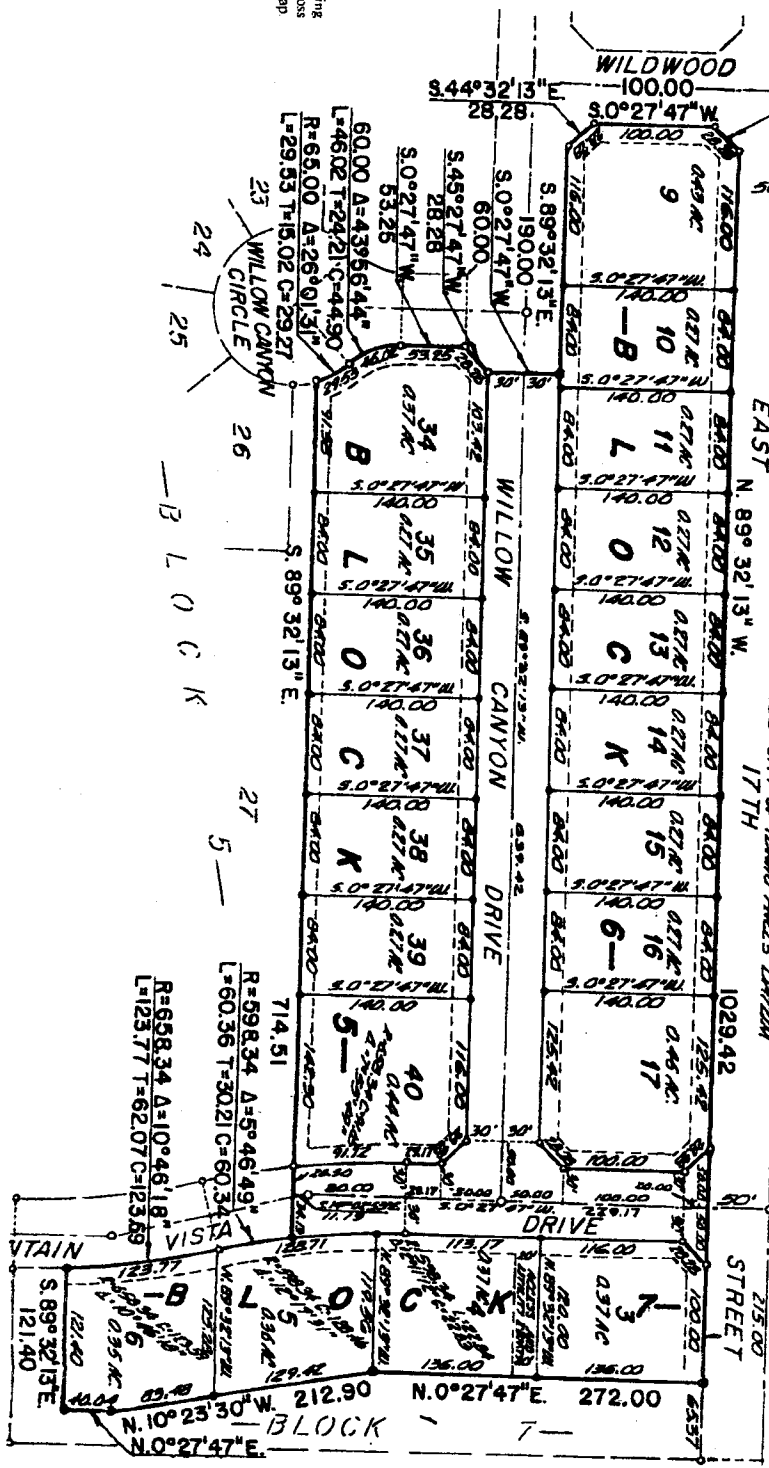
- 6" x 30" Steel rebar set with plastic cap stamped L.S.0795
 - 1/2" x 24" Steel rebar set with plastic cap stamped L.S.0795
 - 6" Steel rebar found with plastic cap stamped L.S.0795
 - 1/2" Steel rebar found with plastic cap stamped L.S.0795
- Utility easements are shown first with along all roadways. All other are ten feet wide unless otherwise noted.
- Private driveway approaches will be constructed as shown on the approved improvement drawings on file in the office of Aberdeen River, Inc., and drainage swales shall be installed.
- The division contains 20 lots with an average lot size of 0.32 acre.
- Access onto 17th Street IS NOT ALLOWED except via dedicated roadways.

**FIRST AMENDED PLAT OF
EAGLE POINTE
DIVISIONS 2 AND 3
AN ADDITION TO THE CITY OF AMMON,
BONNEVILLE COUNTY, IDAHO
BEING A REPLAT OF LOT 1, BLOCK 6, OF DIVISION NO. 2,
LOTS 1-4, 2 THRU 8, BLOCK 6, LOTS 28 THRU 33, BLOCK 5
AND PART OF LOT 1, BLOCK 7, OF DIVISION NO. 3
IN THE N/2 NE 1/4 SECTION 26 T 2 N. R. 38 E. B.M.**



UNPLATTED

SECTION LINE N. 89° 32' 13" W. 1029.42'
EAST N. 89° 32' 13" W. 17 TH



First American Title Company
Idaho Falls, Idaho 83404

This sketch is made solely for the purpose of assisting in locating the premises. The company assumes no liability for alleged loss or damage which may result from reliance on this map.