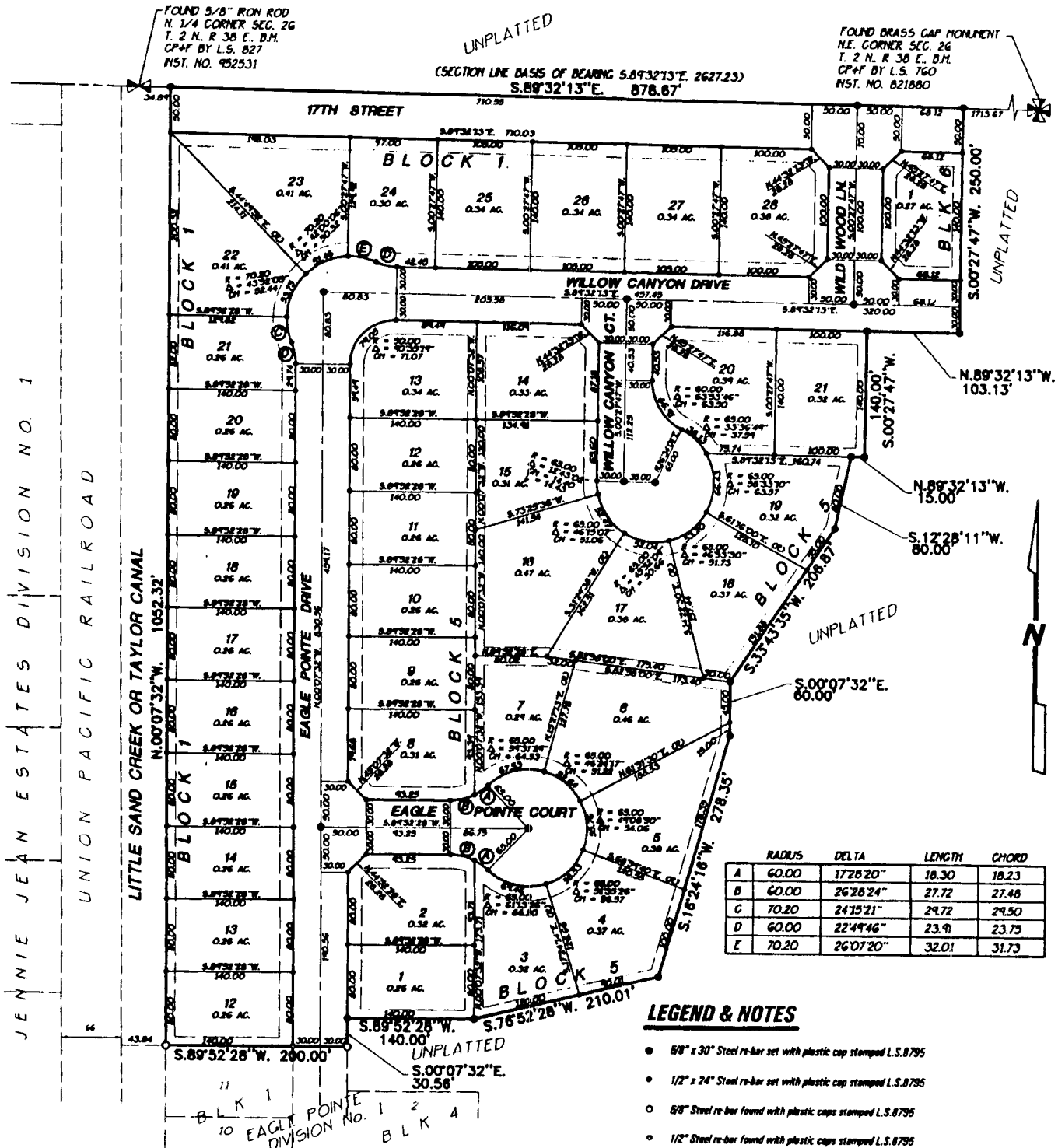


EAGLE POINTE

DIVISION NO. 2

AN ADDITION TO THE CITY OF AMMON,
BONNEVILLE COUNTY, IDAHO
BEING PART OF THE W.1/2 N.E.1/4 SECTION 26, T. 2 N., R.38 E., B.M.



RADIUS	DELTA	LENGTH	CHORD
A	60.00	1728'20"	18.30
B	60.00	26'28'24"	27.72
C	70.20	24'15'21"	29.72
D	60.00	22'49'46"	23.91
E	70.20	26'07'20"	32.01

LEGEND & NOTES

- 5/8" x 30" Steel re-bar set with plastic cap stamped L.S.8795
 - 1/2" x 24" Steel re-bar set with plastic cap stamped L.S.8795
 - 5/8" Steel re-bar found with plastic caps stamped L.S.8795
 - 1/2" Steel re-bar found with plastic caps stamped L.S.8795
- Utility easements are fifteen feet wide along all roadways. All others are ten feet wide unless otherwise noted.

First American Title Company
Idaho Falls, Idaho 83404
This sketch is made solely for the purpose of assisting in locating the premises. The company assumes no liability for alleged loss or damage which may result from reliance on this map.



Private driveway approaches will be constructed as shown on the approved improvement drawings on file in the office of Mountain River, Inc., and drainage swales shall be maintained.