

EAGLE POINTE DIVISION NO. 3

AN ADDITION TO THE CITY OF AMMON,
BONNEVILLE COUNTY, IDAHO

BEING PART OF THE N. 1/2 OF THE N.E. 1/4 OF SEC. 26 T. 2 N. R. 38 E., B. M.

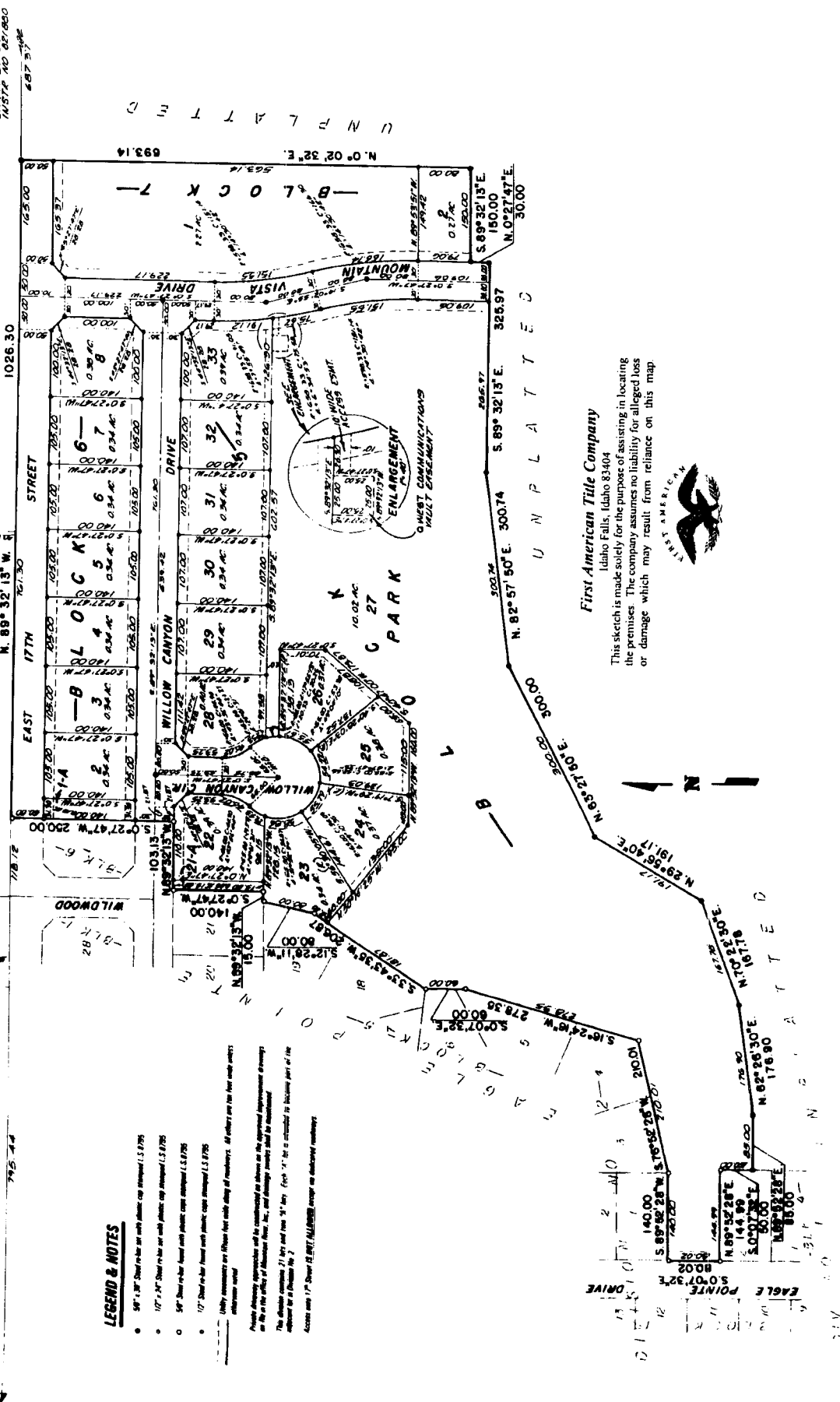
FOUND BY W. W. WILSON
N. 1/4 CORNER SEC. 26
C. 27 N. 38 E. 38 N.
145.74 487.33

UNPLATTED

SECTIONAL RANGING DIV. NO. 9
102
102

UNPLATTED

FOUND BY W. W. WILSON
N. 1/4 CORNER SEC. 26
C. 27 N. 38 E. 38 N.
145.74 487.33



LEGEND & NOTES

- 5/8" = 1" 20' Show iron pin with plastic cap stamped L.S. 8795
- 1/2" = 1" 40' Show iron pin with plastic cap stamped L.S. 8795
- 3/8" = 1" 60' Show iron pin with plastic cap stamped L.S. 8795
- 1/4" = 1" 80' Show iron pin with plastic cap stamped L.S. 8795

Utility easements are shown for water, sewer, gas, electric and telephone lines.

Private drainage easements are shown for lots in the Willow Canyon Drive area.

The above plat was prepared by the First American Title Company, Inc., and is subject to the provisions of the plat for Block 6 in Division No. 2.

Access easement 1" Show 20' EASEMENT across an easement easement.

First American Title Company

Idaho Falls, Idaho 83404
This sketch is made solely for the purpose of assisting in locating the premises. The company assumes no liability for alleged loss or damage which may result from reliance on this map.

