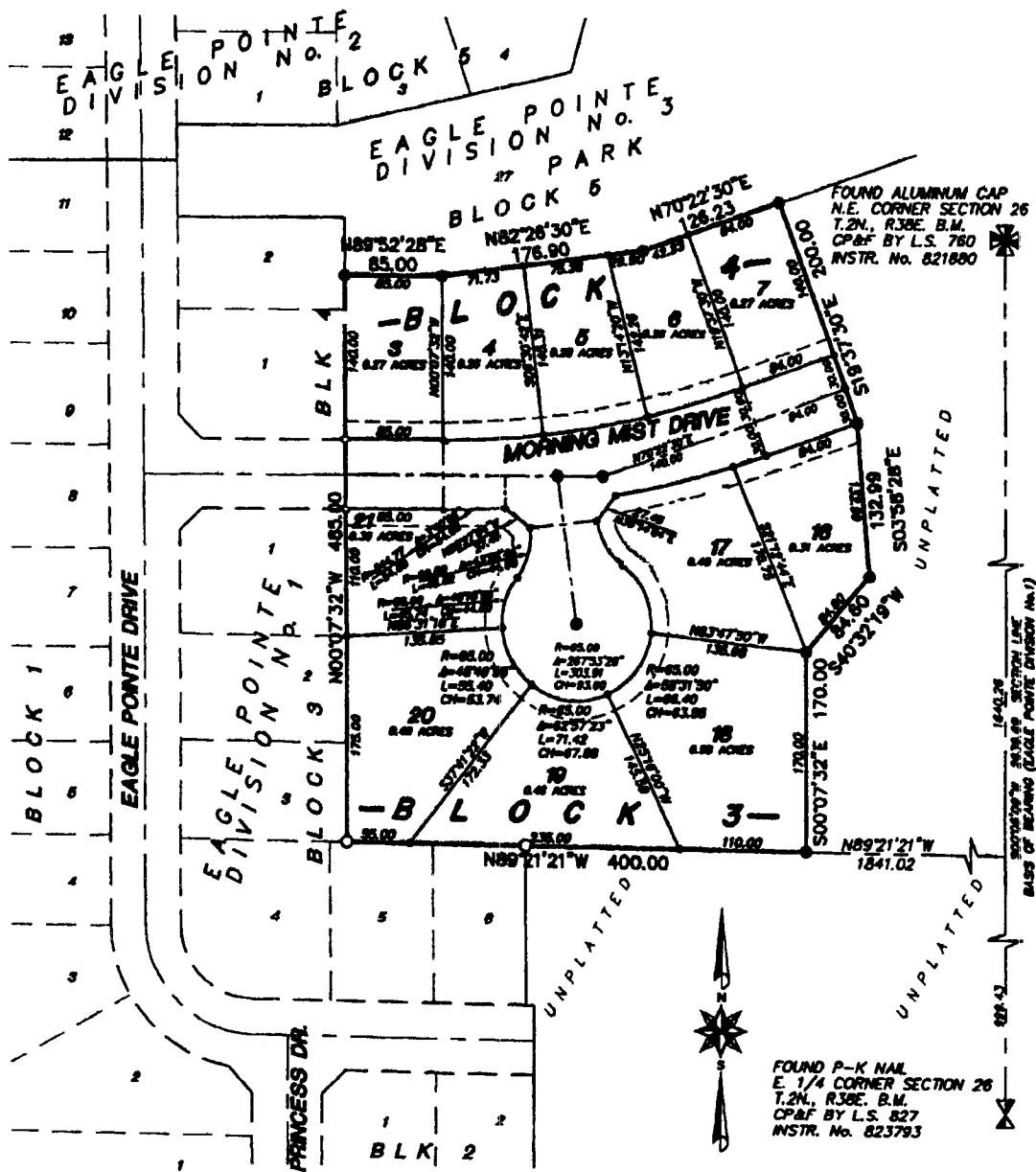


Eagle Pointe Subdivision Division No. 4

An addition to the City Of Ammon
Bonnevill County, Idaho
Being part of the NE 1/4 Section 26
T.2N. R.38 E. Boise Meridian



Legend & Notes

- 5/8" x 30" Steel re-bar set with plastic cap stamped L.S.8795
 - 1/2" x 24" Steel re-bar set with plastic cap stamped L.S.8795
 - 5/8" Steel re-bar found with plastic caps stamped L.S.8795
 - 1/2" Steel re-bar found with plastic caps stamped L.S.8795
- == Utility easements are fifteen feet wide along all roadways

First American Title Company
Idaho falls, Idaho 83404

This sketch is made solely for the purpose of assisting in locating the premises. The company assumes no liability for alleged loss or damage which may result from reliance on this map

