

EAGLE POINTE DIVISION NO. 5

AN ADDITION TO THE CITY OF AMMON
BONNEVILLE COUNTY, IDAHO
BEING A REPLAT OF PART OF LOTS 1 AND 2 BLOCK 7 OF DIVISION NO. 3
AND LOT 6 BLOCK 7 OF THE FIRST AMENDED PLAT
OF EAGLE POINTE DIVISIONS NO. 2 AND 3
AND PART OF THE N.E. 1/4 SECTION 26 T.2N. R.38E. B.M.

FIRST AMENDED PLAT
OF EAGLE POINTE
DIVISIONS 2 AND 3

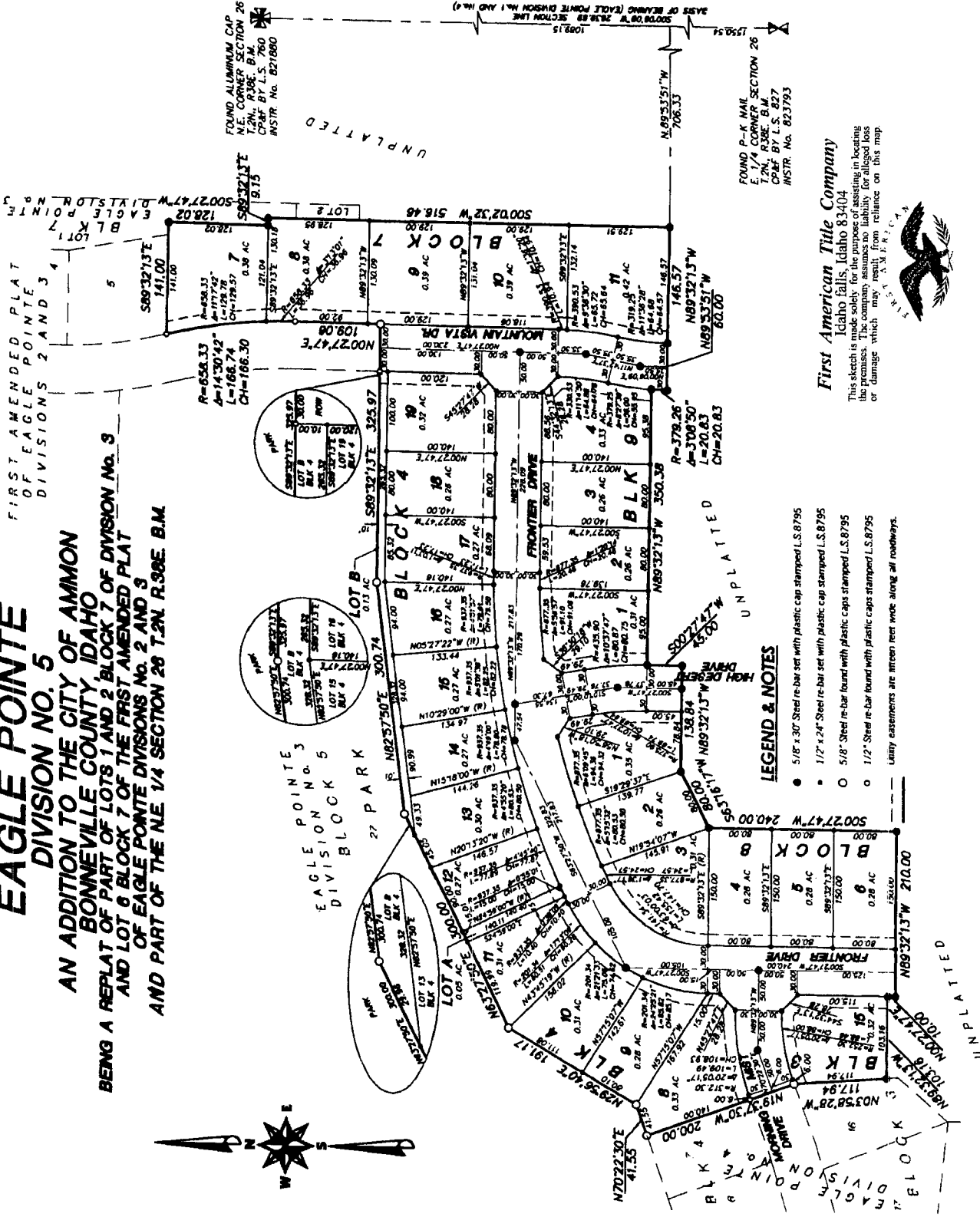


FOUND ALUMINUM CAP
N.E. CORNER SECTION 26
T.2N. R.38E. B.M.
CP-86 BY L.S. 760
INSTR. No. 821860

FOUND P-K NAIL
E. 1/4 CORNER SECTION 26
T.2N. R.38E. B.M.
CP-87 BY L.S. 767
INSTR. No. 823793

First American Title Company
Idaho Falls, Idaho 83404

This sketch is made solely for the purpose of assisting in locating the premises. The company assumes no liability for alleged loss or damage which may result from reliance on this map.



LEGEND & NOTES

- 5/8" x 30" Steel re-bar set with plastic cap stamped L.S.8795
 - 1/2" x 24" Steel re-bar set with plastic cap stamped L.S.8795
 - 5/8" Steel re-bar found with plastic caps stamped L.S.8795
 - 1/2" Steel re-bar found with plastic caps stamped L.S.8795
- Lottery easements are shown next to all roadways.