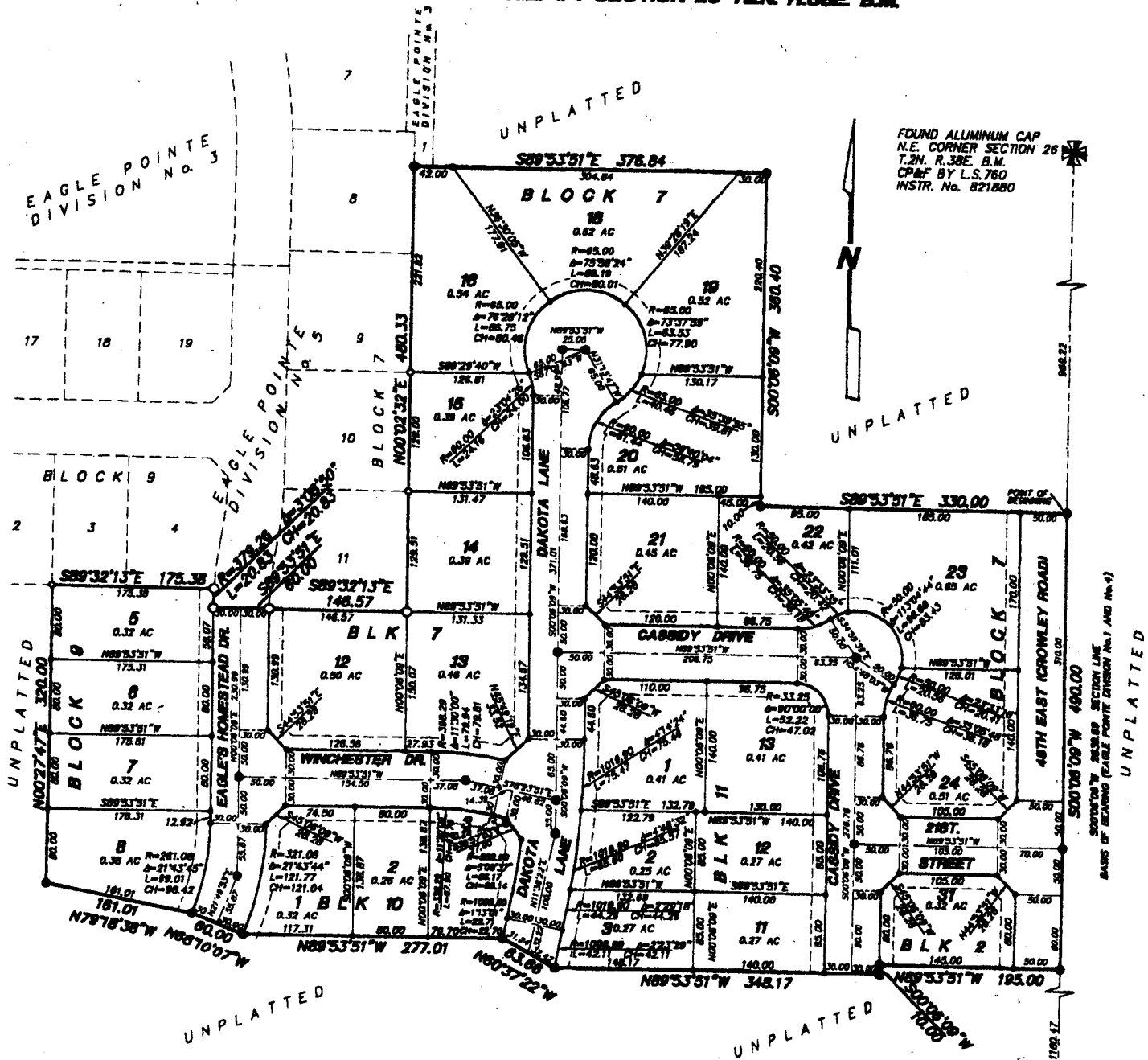


EAGLE POINTE DIVISION NO. 6

AN ADDITION TO THE CITY OF AMMON BONNEVILLE COUNTY, IDAHO

BEING A REPLAT OF PART OF LOT 2 BLOCK 7 OF DIVISION No. 3
BEING PART OF THE N.E. 1/4 SECTION 26 T.2N. R.30E. B.M.



FOUND ALUMINUM CAP
N.E. CORNER SECTION 26
T.2N. R.30E. B.M.
CP&F BY L.S.780
INSTR. No. 821880

FOUND P-K NAIL
E. 1/4 CORNER SECTION 26
T.2N. R.30E. B.M.
CP&F BY L.S. 827
INSTR. No. 823793

LEGEND & NOTES

- 5/8" x 3/8" Steel re-bar set with plastic cap stamped L.S.8795
- 1/2" x 24" Steel re-bar set with plastic cap stamped L.S.8795
- 5/8" Steel re-bar found with plastic caps stamped L.S.8795
- 1/2" Steel re-bar found with plastic caps stamped L.S.8795

First American Title Company
Idaho Falls, Idaho 83404
While this is a photographic reproduction of the recorded plat, the Company assumes no liability for variations, if any, with a re-survey.

FOUND P-K NAIL
E. 1/4 CORNER SECTION 26
T.2N. R.30E. B.M.
CP&F BY L.S. 827
INSTR. No. 823793

Utility easements are shown here with along all roadways. All others are ten feet wide unless otherwise noted.
Private driveway easements will be constructed as shown on the approved improvement drawings on file in the office of Mountain View, Inc. and drainage easements shall be maintained.
Access onto 49th East (Crowley Road) [REDACTED] except via dedicated roadway.