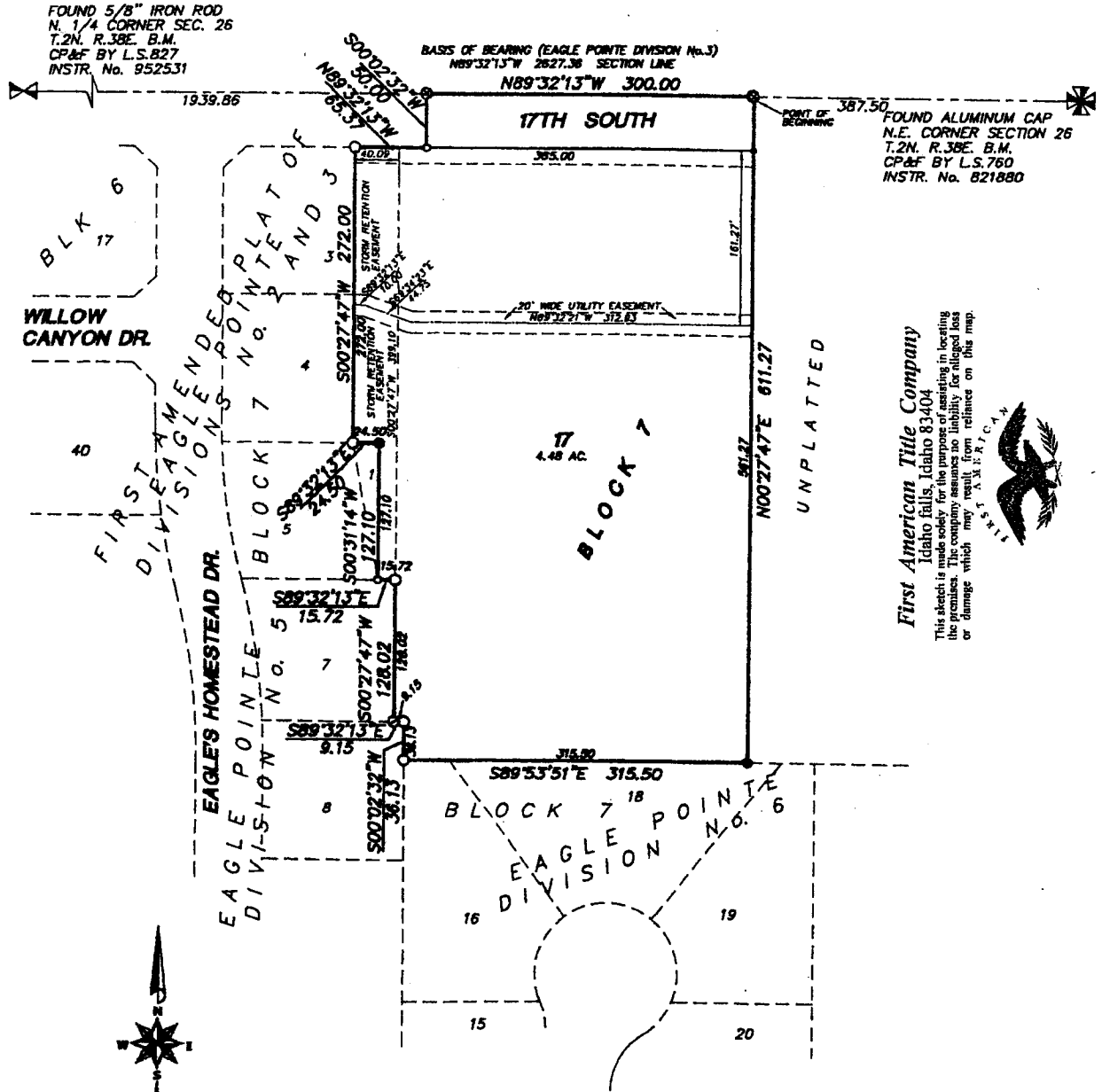


EAGLE POINTE DIVISION NO. 7

AN ADDITION TO THE CITY OF AMMON
BONNEVILLE COUNTY, IDAHO
BEING PART OF THE NE 1/4 SECTION 26 T.2N. R.38E. B.M.
INCLUDING A REPLAT OF PART OF LOTS 1 AND 2 BLOCK 7 OF DIVISION No. 3



First American Title Company

Idaho Falls, Idaho 83404
This sketch is made solely for the purpose of assisting in locating the premises. The company assumes no liability for omissions or damage which may result from reliance on this map.



- LEGEND & NOTES**
- 5/8" x 30" Steel re-bar set with plastic cap stamped L.S.8795
 - 1/2" x 24" Steel re-bar set with plastic cap stamped L.S.8795
 - 5/8" Steel re-bar found with plastic caps stamped L.S.8795
 - 1/2" Steel re-bar found with plastic caps stamped L.S.8795