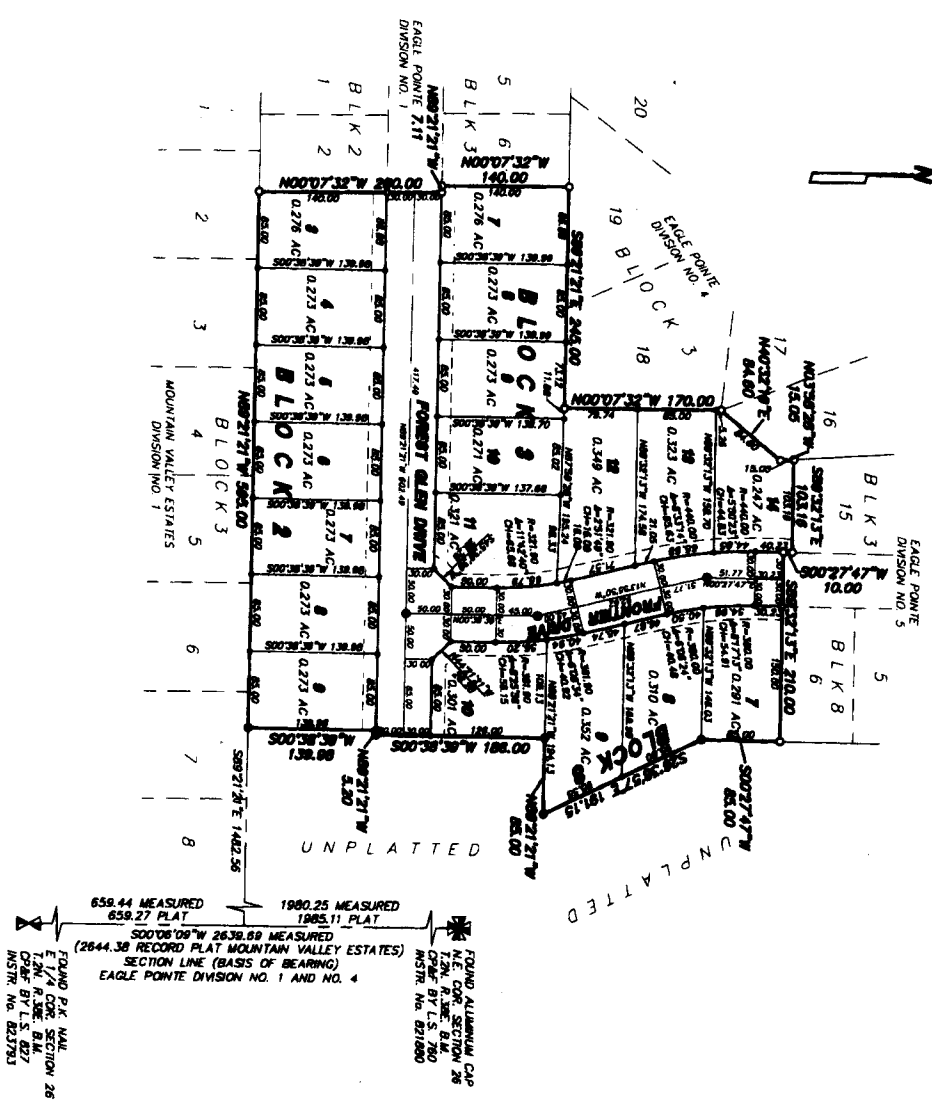


EAGLE POINTE DIVISION NO. 8

AN ADDITION TO THE CITY OF AMMON, BONNEVILLE COUNTY, DAHO

BEING PART OF THE NE 1/4 OF SECTION 26 7th R. 99E B.M.



LEGEND & NOTES

- 3/4" 30" Show in-hair and with plastic cap stamped L.S. 8785
 - 1/2" 24" Show in-hair and with plastic cap stamped L.S. 8785
 - 3/8" Show in-hair and with plastic cap stamped L.S. 8785
 - 1/2" Show in-hair and with plastic cap stamped L.S. 8785
- (All measurements are shown from side of roadway. All corners are set back with unmarked dimensions noted.)

First American Title Company
 Idaho Falls, Idaho 83404
 While this is a photographic
 reproduction of the recorded
 plat, the Company assumes no
 liability for variations,
 if any, with a re-survey.