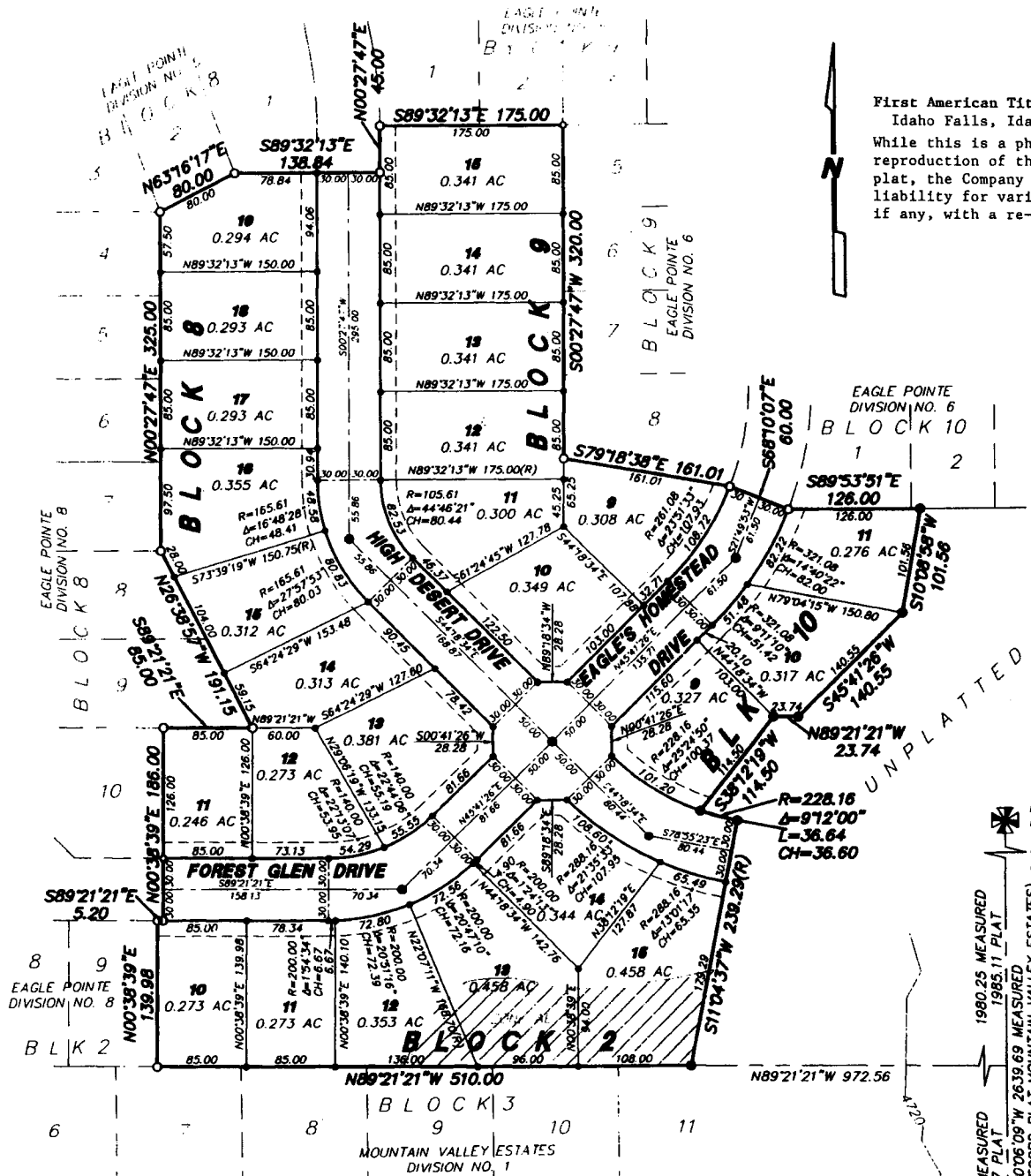


EAGLE POINTE DIVISION NO. 9

AN ADDITION TO THE CITY OF AMMON, BONNEVILLE COUNTY, IDAHO

BEING PART OF THE N.E. 1/4 OF SECTION 26 T.2N. R.38E. B.M.



First American Title Company
Idaho Falls, Idaho 83404
While this is a photographic reproduction of the recorded plat, the Company assumes no liability for variations, if any, with a re-survey.

FOUND ALUMINUM CAP
N.E. COR. SECTION 26
T.2N. R.38E. B.M.
CP&F BY L.S. 760
INSTR. No. 821880

1980.25 MEASURED
1985.11 PLAT
659.27 PLAT
500'06.09" W 26'39.69" MEASURED
(2644.38 RECORD PLAT MOUNTAIN VALLEY ESTATES)
SECTION LINE (BASIS OF BEARING)
EAGLE POINTE DIVISION NO. 1 AND NO. 4

FOUND P.K. NAIL
E. 1/4 COR. SECTION 26
T.2N. R.38E. B.M.
CP&F BY L.S. 827
INSTR. No. 823793

LEGEND & NOTES

- 5/8" x 30" Steel re-bar set with plastic cap stamped L S 8795
- 1/2" x 24" Steel re-bar set with plastic cap stamped L S 8795
- 5/8" Steel re-bar found with plastic caps stamped L S 8795
- 1/2" Steel re-bar found with plastic caps stamped L S 8795

--- Utility easements are fifteen feet wide along all roadways. All others are ten feet wide unless otherwise noted

Special flood hazard area inundated by 100-year flood - Zone AE

Base flood elevation line. Elevation in feet NGVD 1929