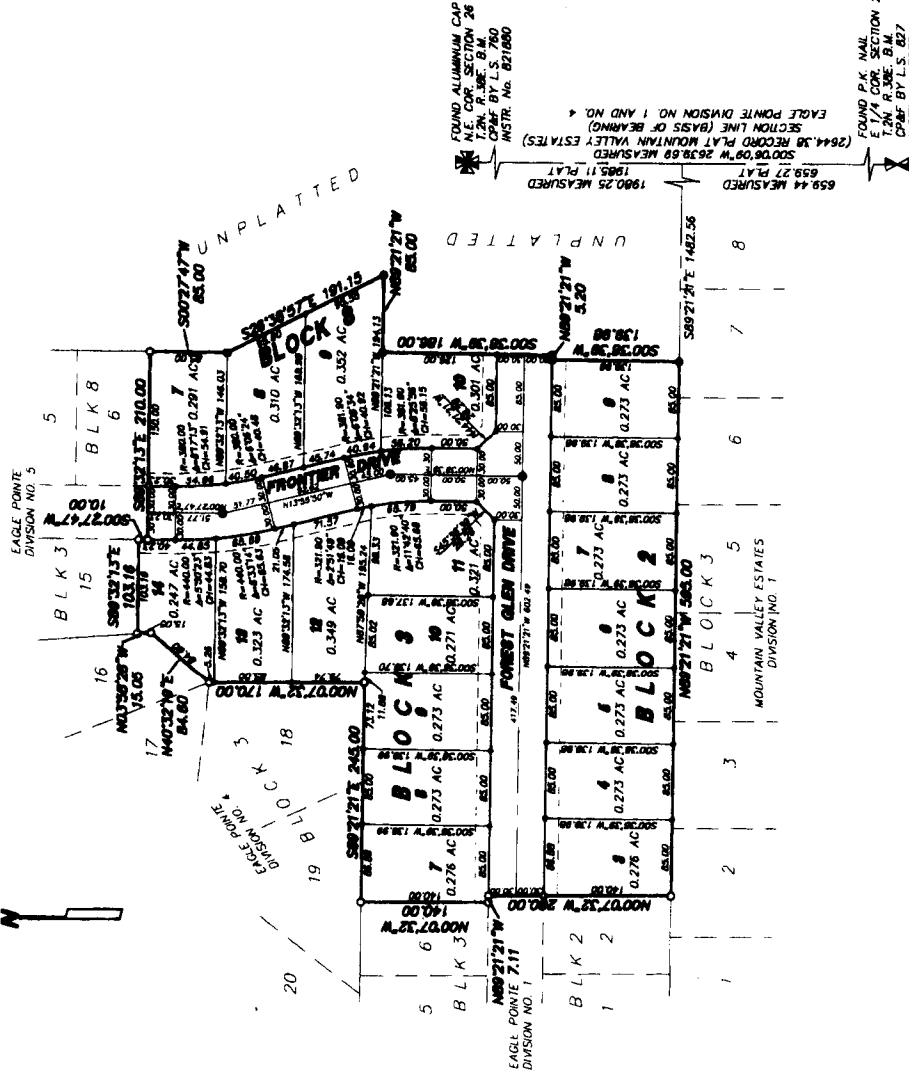


**EAGLE POINTE**  
**DIVISION NO. 8**  
**AN ADDITION TO THE CITY OF AMMON,**  
**BONNEVILLE COUNTY, IDAHO**  
**BEING PART OF THE NE 1/4 OF SECTION 26 T.24N. R.30E. B.M.**



FOUND ALUMINUM CAP  
 N.E. COR. SECTION 26  
 COR. P.M. S. B.M.  
 COR. P.M. L. B.M.  
 INSTR. NO. 821880

FOUND P.K. MARK  
 E. 1/4 COR. SECTION 26  
 T.24N. R.30E. B.M.  
 CORNER BY L.S. 827  
 INSTR. NO. 823793

659.44 MEASURED  
 1905.27 PLAT  
 500°08'09\"/>

First American Title Company  
 Idaho Falls, Idaho 83404  
 While this is a photographic  
 reproduction of the recorded  
 plat, the Company assumes no  
 liability for variations,  
 if any, with a re-survey.

**LEGEND & NOTES**

- 5/8" x 3/8" Steel re-bar with plastic cap stamped L.S. 8795
  - 1/2" x 24" Steel re-bar with plastic cap stamped L.S. 8795
  - 5/8" Steel re-bar found with plastic cap stamped L.S. 8795
  - 1/2" Steel re-bar found with plastic cap stamped L.S. 8795
- Utility easements are shown but not shown unless otherwise noted.