

EAGLE SUBDIVISION DIVISION NO. 1 BONNEVILLE COUNTY, IDAHO

**BEING A REPLAT OF WILLOW CREEK TOOL SUBDIVISION, DIVISION NO. 1
LYING IN THE S.E. 1/4 OF SECTION 4, T.2 N. R. 38 E. B.M.**

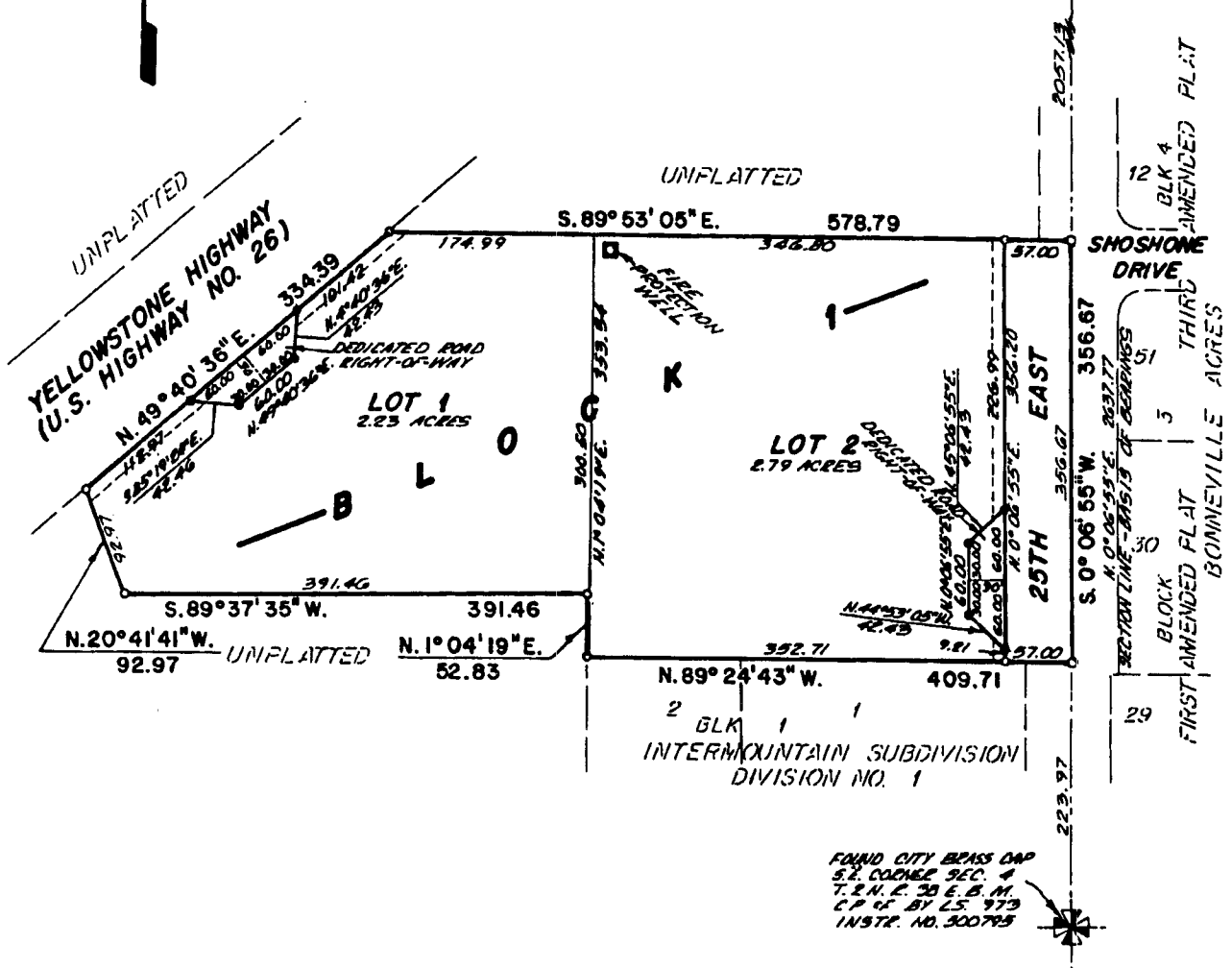


First American Title Company
Idaho Falls, Idaho 83404

This sketch is made solely for the purpose of assisting in locating the premises. The company assumes no liability for alleged loss or damage which may result from reliance on this map.



FOUND CITY BRASS CAP
E. IN CORNER SEC. 4
T.2 N. R. 38 E. B.M.
C.P.C.E. BY L.S. 827
INSTR. NO. 578954



LEGEND & NOTES

- 5/8" x 30" Steel Re-bar found with plastic cap stamped L.S.827
- 1/2" x 24" Steel Re-bar found with plastic cap stamped L.S.827
- 1/2" x 24" Steel Re-bar set with cap stamped L.S.8795

----- Utility easements are ten feet wide unless otherwise shown.

Access onto U.S. Highway No. 26, 91, 191 and onto 25th East is limited to the designated accessors as shown on the plat.

The lot shown on this plat is included in a lighting district and will be assessed for operation and maintenance.

FOUND CITY BRASS CAP
S. IN CORNER SEC. 4
T.2 N. R. 38 E. B.M.
C.P.C.E. BY L.S. 973
INSTR. NO. 300795