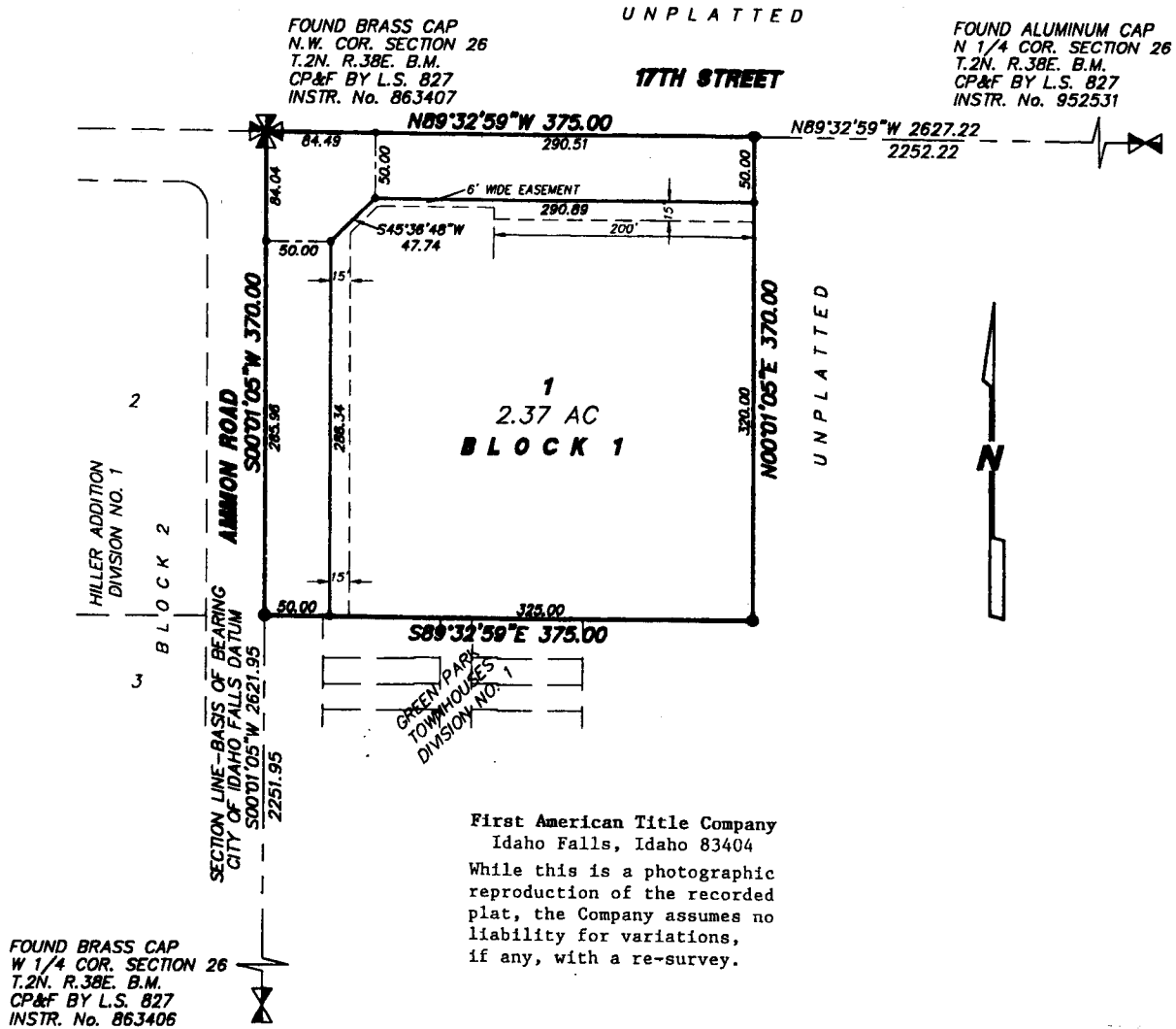


EAGLE PINES DIVISION NO. 1

AN ADDITION TO THE CITY OF AMMON, BONNEVILLE COUNTY, IDAHO
BEING PART OF THE N.W. 1/4 OF SECTION 26, T.2N., R.38E. B.M.



LEGEND & NOTES

- 5/8" x 30" Steel rebar set with plastic cap stamped L.S.8795
- 1/2" x 24" Steel rebar set with plastic cap stamped L.S.8795

— A 15 foot wide Utility Easement is hereby granted along all road frontages within each lot. All other utility easements are
- - - noted otherwise.