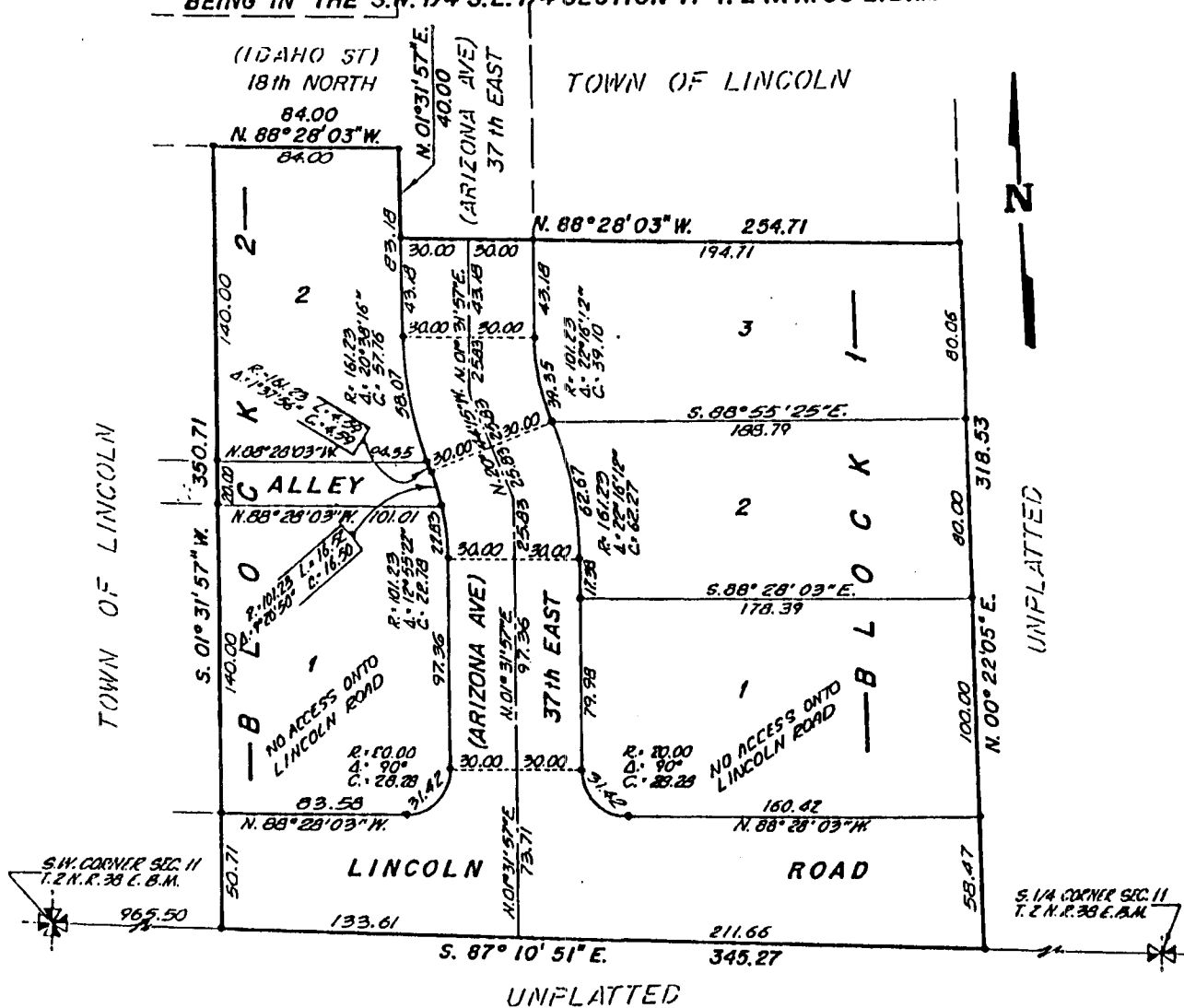


EAST PARK DIVISION NO. 1

**BEING A REPLAT OF LOTS 21 THRU 26 BLOCK 1, AND LOTS 1, 2, 11 & 12 BLOCK 13
OF THE TOWN OF LINCOLN, BONNEVILLE COUNTY, IDAHO
BEING IN THE S.W. 1/4 S.E. 1/4 SECTION 11 T. 2 N. R. 38 E. B.M.**



• DENOTES IRON RODS
THIS SUBDIVISION WILL
RECEIVE WATER FROM THE
FALLS WATER COMPANY

First American Title Company
Idaho Falls, Idaho 83404

This sketch is made solely for the purpose of assisting in locating the premises. The company assumes no liability for alleged loss or damage which may result from reliance on this map.

