

EAST RIVER COMMONS

A PLANNED UNIT DEVELOPMENT

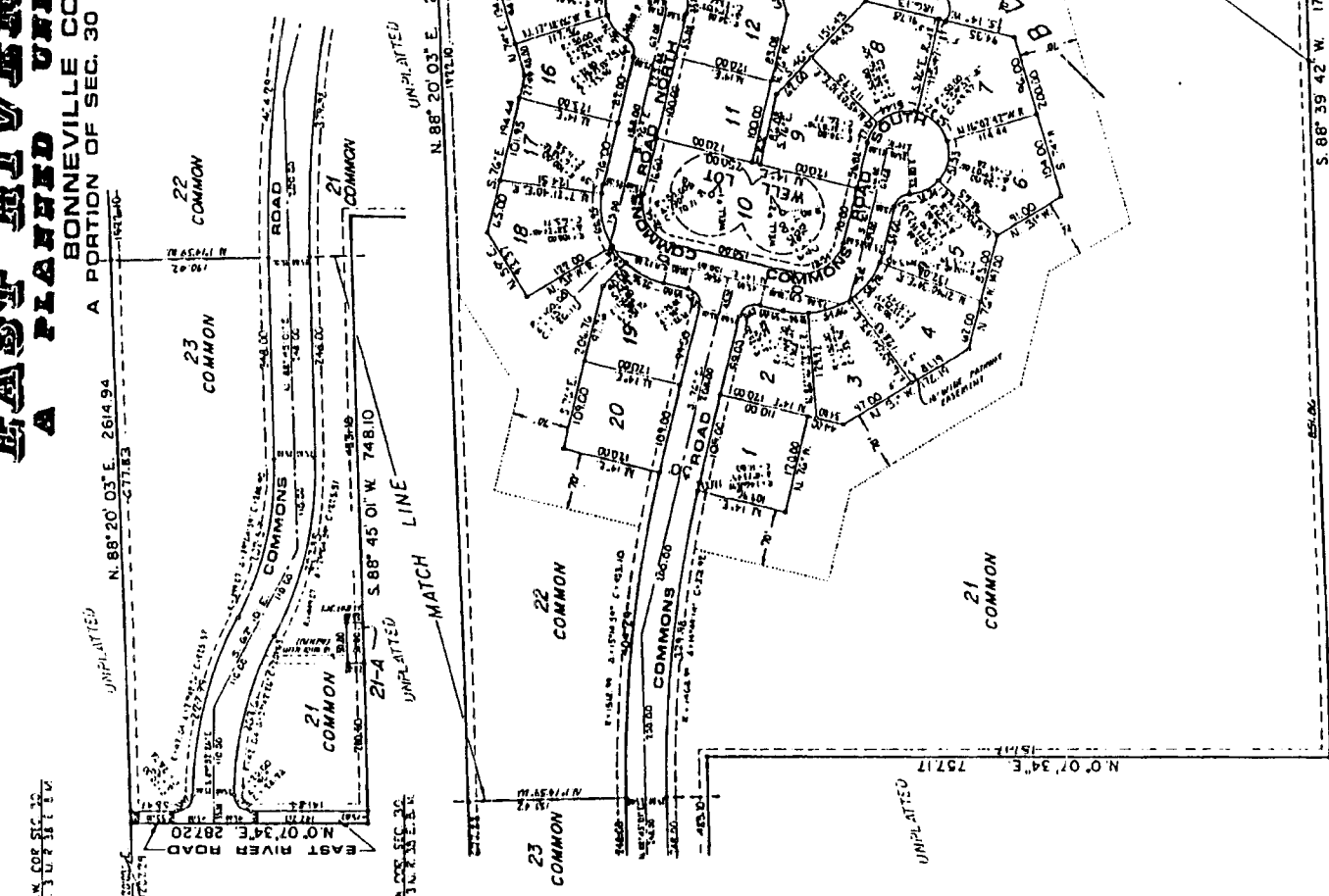
BONNEVILLE COUNTY, IDAHO
A PORTION OF SEC. 30 T. 3 N. R. 38 E. B. M.



First American Title Company
Idaho Falls, Idaho 83404

This sketch is made solely for the purpose of assisting in locating the premises. The company assumes no liability for alleged loss or damage which may result from reliance on this map.

NOTES:—
 1. DESIGNATES IRON RODS
 2. DESIGNATES EASEMENTS IN WIDTH
 3. A 50 FOOT EASEMENT IS GRANTED ADJACENT TO WELLS
 4. THE STATE SHALL BE RESPONSIBLE FOR THE CONSTRUCTION OF THE
 5. THE STATE SHALL BE RESPONSIBLE FOR THE CONSTRUCTION OF THE
 6. THE STATE SHALL BE RESPONSIBLE FOR THE CONSTRUCTION OF THE
 7. THE STATE SHALL BE RESPONSIBLE FOR THE CONSTRUCTION OF THE
 8. THE STATE SHALL BE RESPONSIBLE FOR THE CONSTRUCTION OF THE
 9. THE STATE SHALL BE RESPONSIBLE FOR THE CONSTRUCTION OF THE
 10. THE STATE SHALL BE RESPONSIBLE FOR THE CONSTRUCTION OF THE



N.W. COR SEC. 30
T. 3 N. R. 38 E. B. M.

UNPLATTED
N. 88° 20' 03" E. 2614.94
1972.0

UNPLATTED
N. 88° 20' 03" E. 2614.94
1972.0

UNPLATTED
S. 88° 45' 01" W. 748.10
1972.0

UNPLATTED
N. 88° 20' 03" E. 2614.94
1972.0

UNPLATTED
N. 0° 07' 34" E. 797.17
1971.7

UNPLATTED
S. 88° 39' 42" W. 1786.87
1972.0

UNPLATTED
S. 1° 56' 15" W. 937.37
1937.7

UNPLATTED
S. 21° 46' 35" W. 1351.7
1951.7

UNPLATTED
S. 1° 56' 15" W. 937.37
1937.7

UNPLATTED
S. 21° 46' 35" W. 1351.7
1951.7

UNPLATTED
S. 1° 56' 15" W. 937.37
1937.7

UNPLATTED
S. 21° 46' 35" W. 1351.7
1951.7

UNPLATTED
S. 1° 56' 15" W. 937.37
1937.7

UNPLATTED
S. 1° 56' 15" W. 937.37
1937.7

UNPLATTED
S. 21° 46' 35" W. 1351.7
1951.7

UNPLATTED
S. 88° 39' 42" W. 1786.87
1972.0

UNPLATTED
S. 1° 56' 15" W. 937.37
1937.7

UNPLATTED
S. 21° 46' 35" W. 1351.7
1951.7

UNPLATTED
S. 1° 56' 15" W. 937.37
1937.7

UNPLATTED
S. 21° 46' 35" W. 1351.7
1951.7

UNPLATTED
S. 1° 56' 15" W. 937.37
1937.7

UNPLATTED
S. 21° 46' 35" W. 1351.7
1951.7

UNPLATTED
S. 1° 56' 15" W. 937.37
1937.7

UNPLATTED
S. 21° 46' 35" W. 1351.7
1951.7

UNPLATTED
S. 1° 56' 15" W. 937.37
1937.7

UNPLATTED
S. 21° 46' 35" W. 1351.7
1951.7

UNPLATTED
S. 1° 56' 15" W. 937.37
1937.7

UNPLATTED
S. 21° 46' 35" W. 1351.7
1951.7

UNPLATTED
S. 1° 56' 15" W. 937.37
1937.7

UNPLATTED
S. 21° 46' 35" W. 1351.7
1951.7