

# FIRST AMENDED PLAT OF EAST VIEW ADDITION DIVISION NO. 3

TO THE CITY OF IDAHO FALLS,  
BONNEVILLE COUNTY, IDAHO  
BEING A REPLAT OF LOTS 14 THRU 19, BLOCK 17  
EAST VIEW ADDITION, DIVISION No. 3  
IN THE S.E. 1/4 SECTION 16 T.2N. R.38E. B.M.

**NOTE:**

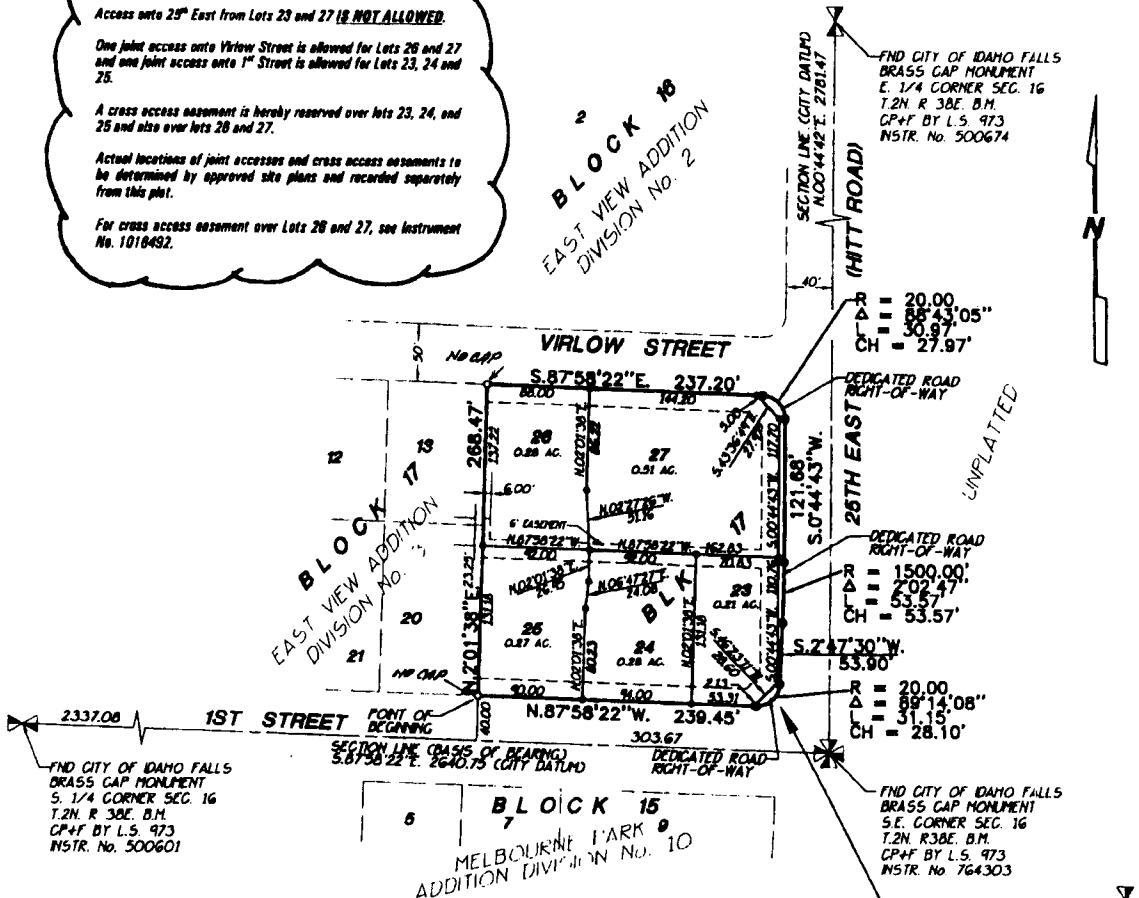
Access onto 25<sup>th</sup> East from Lots 23 and 27 is **NOT ALLOWED**.

One joint access onto Virlow Street is allowed for Lots 26 and 27 and one joint access onto 1<sup>st</sup> Street is allowed for Lots 23, 24 and 25.

A cross access easement is hereby reserved over lots 23, 24, and 25 and also over lots 26 and 27.

Actual locations of joint accesses and cross access easements to be determined by approved site plans and recorded separately from this plat.

For cross access easement over Lots 26 and 27, see Instrument No. 1018492.



**LEGEND & NOTES**

5/8" x 30" Steel Re-bar set with plastic cap stamped L.S.8795

1/2" x 24" Steel Re-bar set with plastic cap stamped L.S.8795

Steel Re-bar found with caps stamped as shown

A fifteen foot wide Utility Easement is hereby granted along all road frontages within each lot. All other easements are eight feet wide unless otherwise noted.

**First American Title Company**

Idaho Falls, Idaho 83404

This sketch is made solely for the purpose of assisting in locating the premises. The company assumes no liability for alleged loss or damage which may result from reliance on this map

