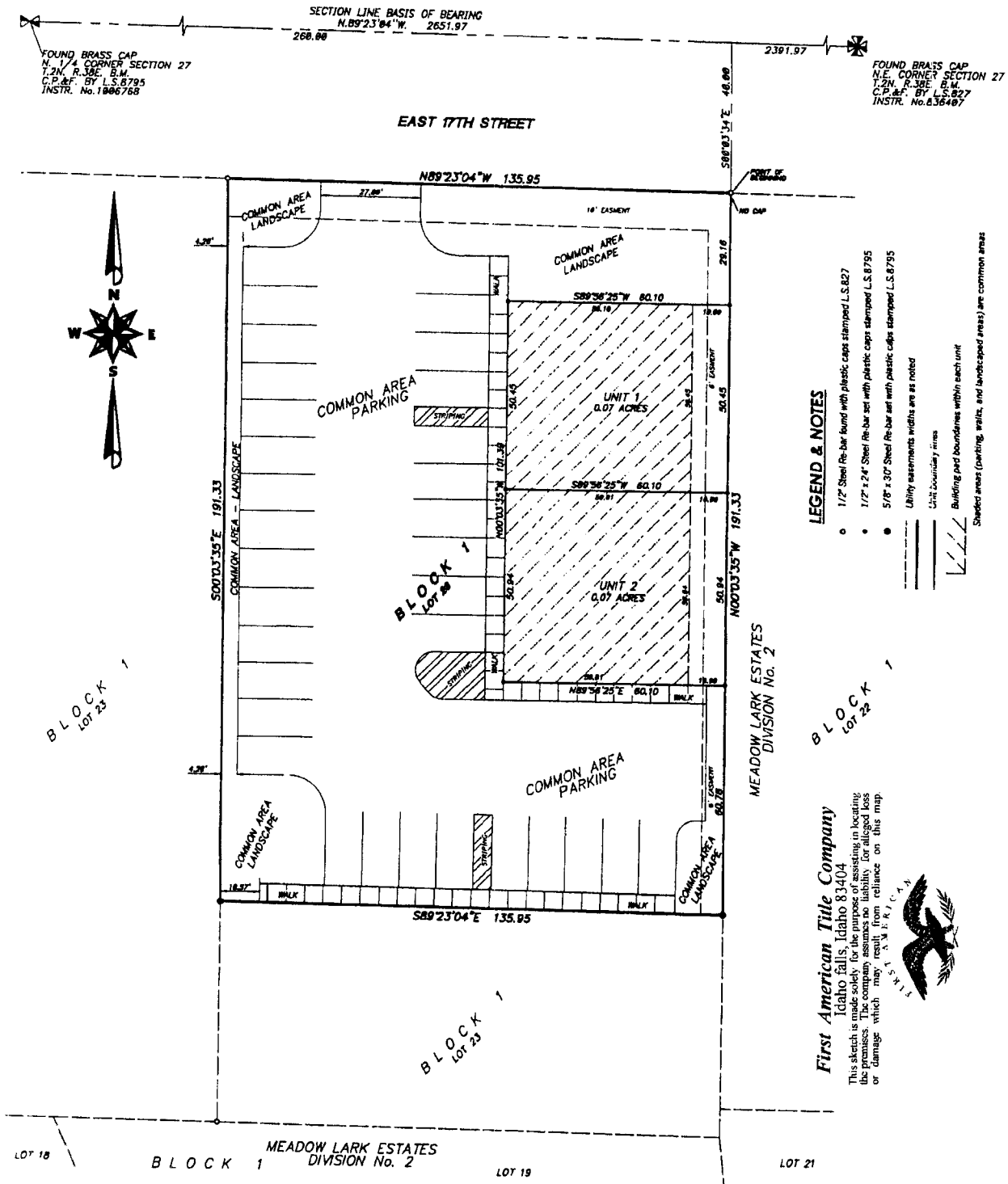


EASTSIDE PROFESSIONAL PLAZA

PURSUANT TO IDAHO CODE, TITLE 55, CHAPTER 15
CITY OF AMMON, BONNEVILLE COUNTY, IDAHO



LEGEND & NOTES

- 1/2" Steel Re-bar found with plastic caps stamped L.S.827
 - 1/2" x 24" Steel Re-bar set with plastic caps stamped L.S.8795
 - 5/8" x 30" Steel Re-bar set with plastic caps stamped L.S.8795
- Utility easements widths are as noted
- Unit boundary lines
- Building pad boundaries within each unit
- Shaded areas (coning, walls, and landscaped areas) are common areas

First American Title Company
Idaho Falls, Idaho 83404

This sketch is made solely for the purpose of assisting in locating the boundaries of common areas in the vicinity of alleged loss or damage which may result from reliance on this map.



FIRST AMERICAN TITLE COMPANY