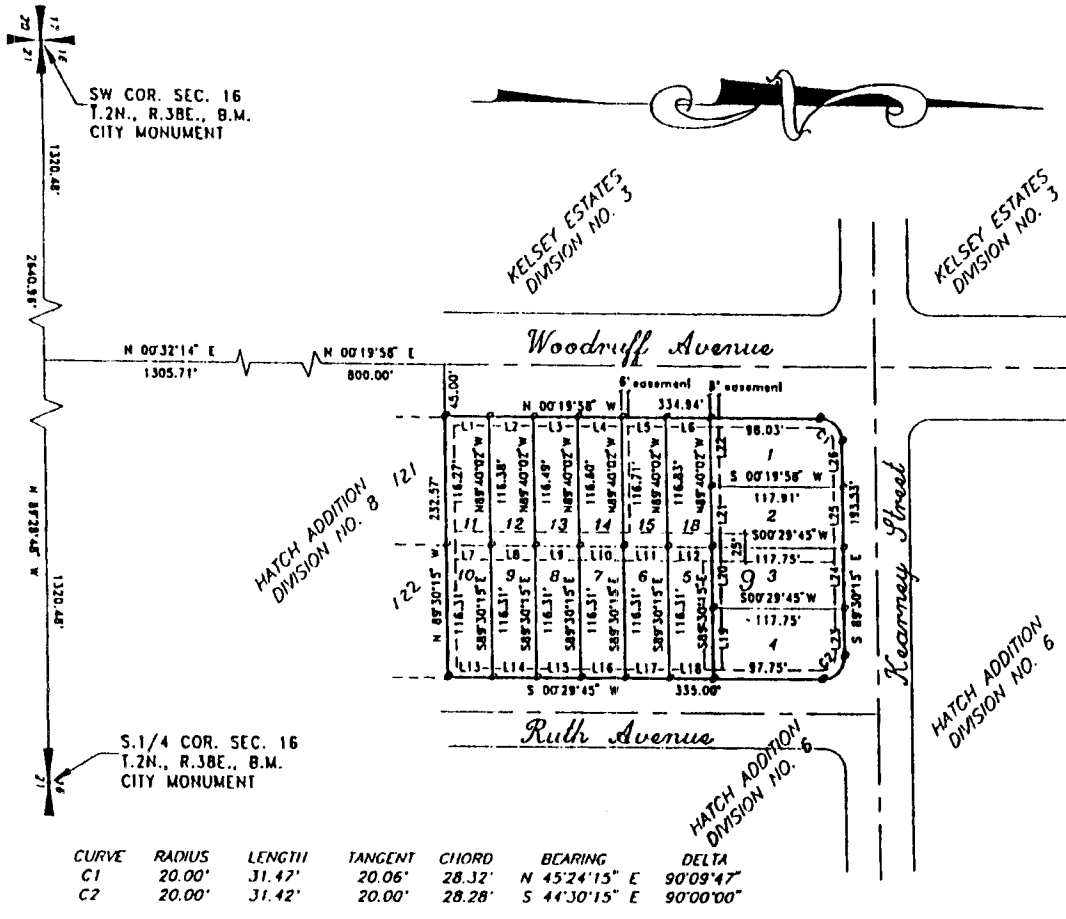


# EASTSIDE VILLAGE

A REPLAT OF LOTS 1 & 2 of BLOCK 9 of the  
FIRST AMENDED PLAT HATCH ADDITION DIV. NO. 6  
TO THE CITY OF IDAHO FALLS, BONNEVILLE COUNTY, IDAHO  
A PORTION OF SECTION 16, T. 2 N., R. 38 E. B.M.



LINE	DIRECTION	DISTANCE
L1	N 00°19'58" W	39.41'
L2	N 00°19'58" W	39.50'
L3	N 00°19'58" W	39.50'
L4	N 00°19'58" W	39.50'
L5	N 00°19'58" W	39.50'
L6	N 00°19'58" W	39.50'
L7	S 00°29'45" W	39.75'
L8	S 00°29'45" W	39.50'
L9	S 00°29'45" W	39.50'
L10	S 00°29'45" W	39.50'
L11	S 00°29'45" W	39.50'
L12	S 00°29'45" W	39.50'
L13	S 00°29'45" W	39.75'
L14	S 00°29'45" W	39.50'
L15	S 00°29'45" W	39.50'
L16	S 00°29'45" W	39.50'
L17	S 00°29'45" W	39.50'
L18	S 00°29'45" W	39.50'
L19	N 89°30'15" W	61.00'
L20	N 89°30'15" W	55.31'
L21	N 89°40'02" W	55.94'
L22	N 89°40'02" W	61.00'
L23	S 89°30'15" E	41.00'
L24	S 89°30'15" E	55.31'
L25	S 89°30'15" E	56.28'
L26	S 89°30'15" E	40.94'

CURVE	RADIUS	LENGTH	TANGENT	CHORD	BEARING	DELTA
C1	20.00'	31.47'	20.06'	28.32'	N 45°24'15" E	90°09'47"
C2	20.00'	31.42'	20.00'	28.28'	S 44°30'15" E	90°00'00"

**First American Title Company**  
Idaho Falls, Idaho 83404

This sketch is made solely for the purpose of assisting in locating the premises. The company assumes no liability for alleged loss or damage which may result from reliance on this map.



### LEGEND

- Section corner control
- Placed 1/2" X 24" iron rod with cap marked P.L.S. 4563
- Find Iron Rod
- Utility easements are 10' wide along the frontage of all lots. Side yard and rear yard easements are 8' unless otherwise shown.