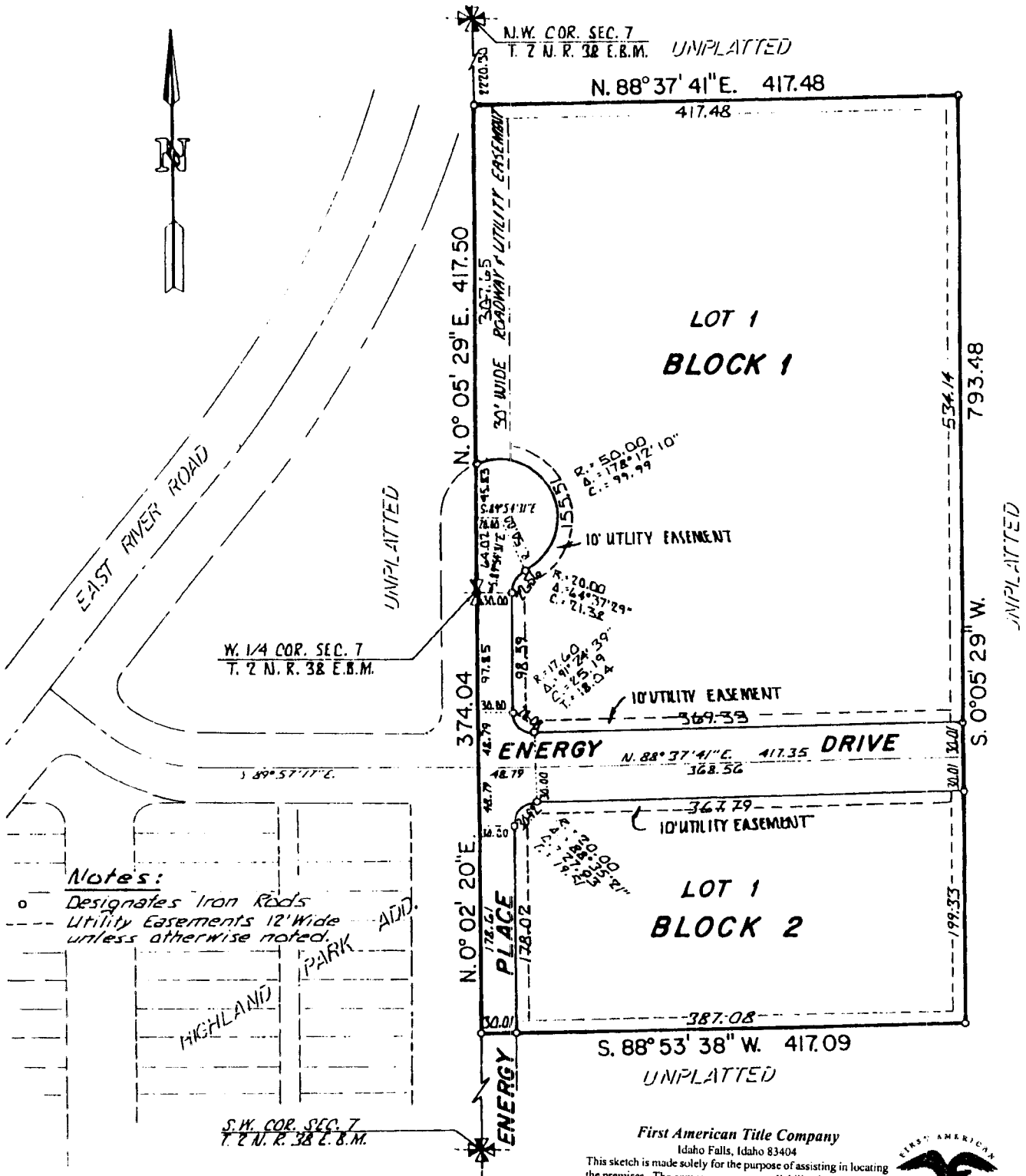


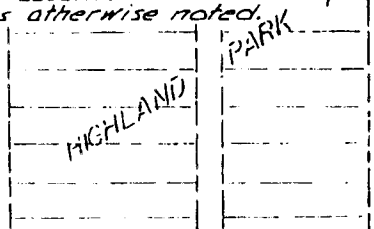
# ENERGY PLAZA

AN ADDITION TO THE CITY OF IDAHO FALLS  
 BONNEVILLE COUNTY, IDAHO  
 PORTION OF THE WEST 1/2 OF SECTION 7 T. 2 N. R. 38 E. B. 1



**Notes:**

- Designates Iron Rods
- Utility Easements 12' Wide unless otherwise noted.



First American Title Company

Idaho Falls, Idaho 83404

This sketch is made solely for the purpose of assisting in locating the premises. The company assumes no liability for alleged loss or damage which may result from reliance on this map.

