

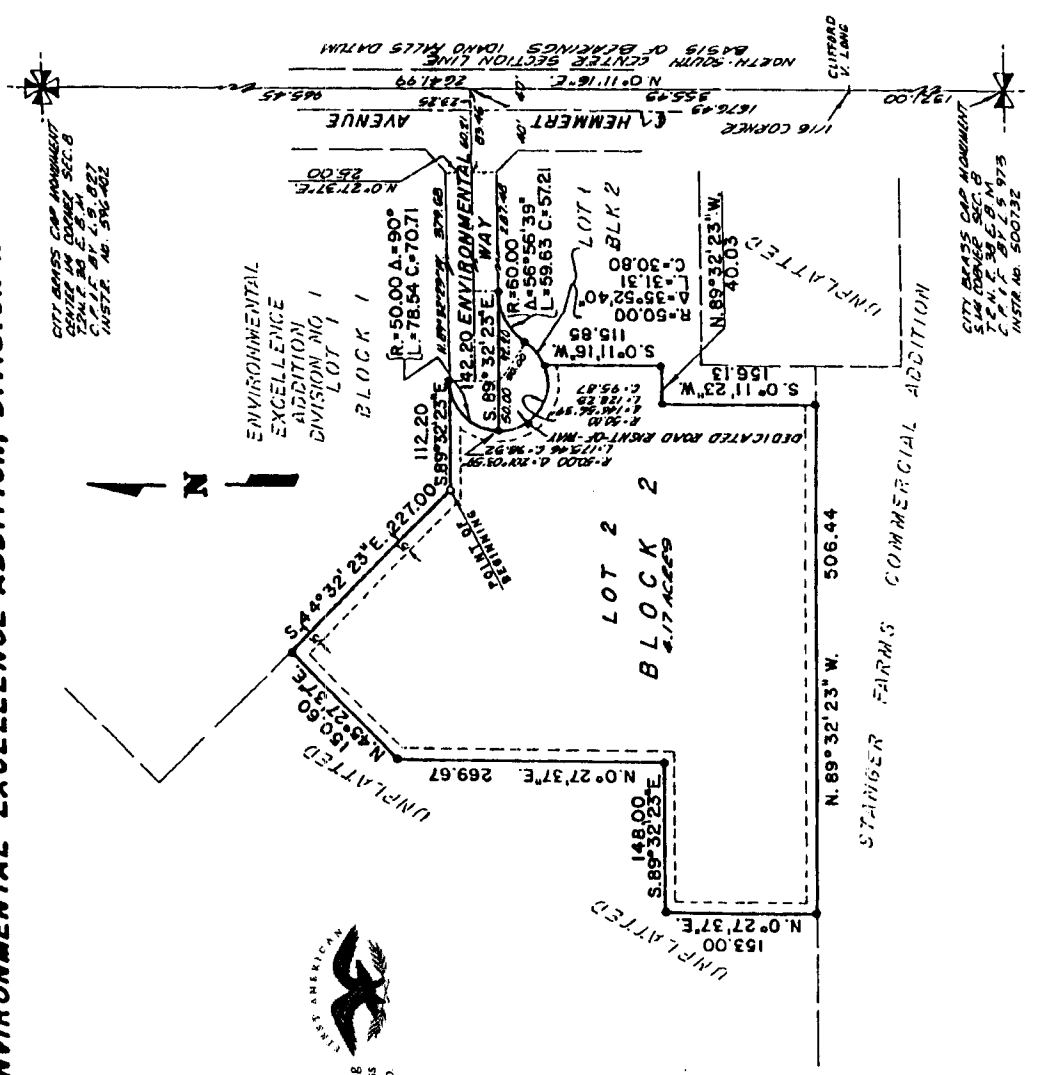
**ENVIRONMENTAL EXCELLENCE ADDITION
DIVISION NO. 2**
TO THE CITY OF IDAHO FALLS, BONNEVILLE COUNTY, IDAHO
BEING PART OF THE N.E. 1/4 OF THE S.W. 1/4 OF SECTION 8, T.2N., R.38E., B.M.
WHICH INCLUDES A REPLAT OF PART OF LOT 1, BLOCK 2,
ENVIRONMENTAL EXCELLENCE ADDITION, DIVISION NO. 1

LEGEND

- 5/8" x 3/8" Steel Pin-Set with plastic cap stamped L.S. 827
- 1/2" x 24" Steel Pin-Set with plastic cap stamped L.S. 827
- Steel Pin-Set found with cap stamped L.S. 827 unless otherwise shown
- Utility easements, widths as shown. For Pin-Set, unless otherwise shown.

First American Title Company
Idaho Falls, Idaho 83404

This sketch is made solely for the purpose of assisting in locating the premises. The company assumes no liability for alleged loss or damage which may result from reliance on this map.



CITY GRASS CAP MONUMENT
CENTER IN CORNER, SEC. 8
C.M.F. NO. 4-5-022
INSTR. NO. 590-202

CITY GRASS CAP MONUMENT
S.W. CORNER, SEC. 8
C.M.F. NO. 4-5-022
INSTR. NO. 500732