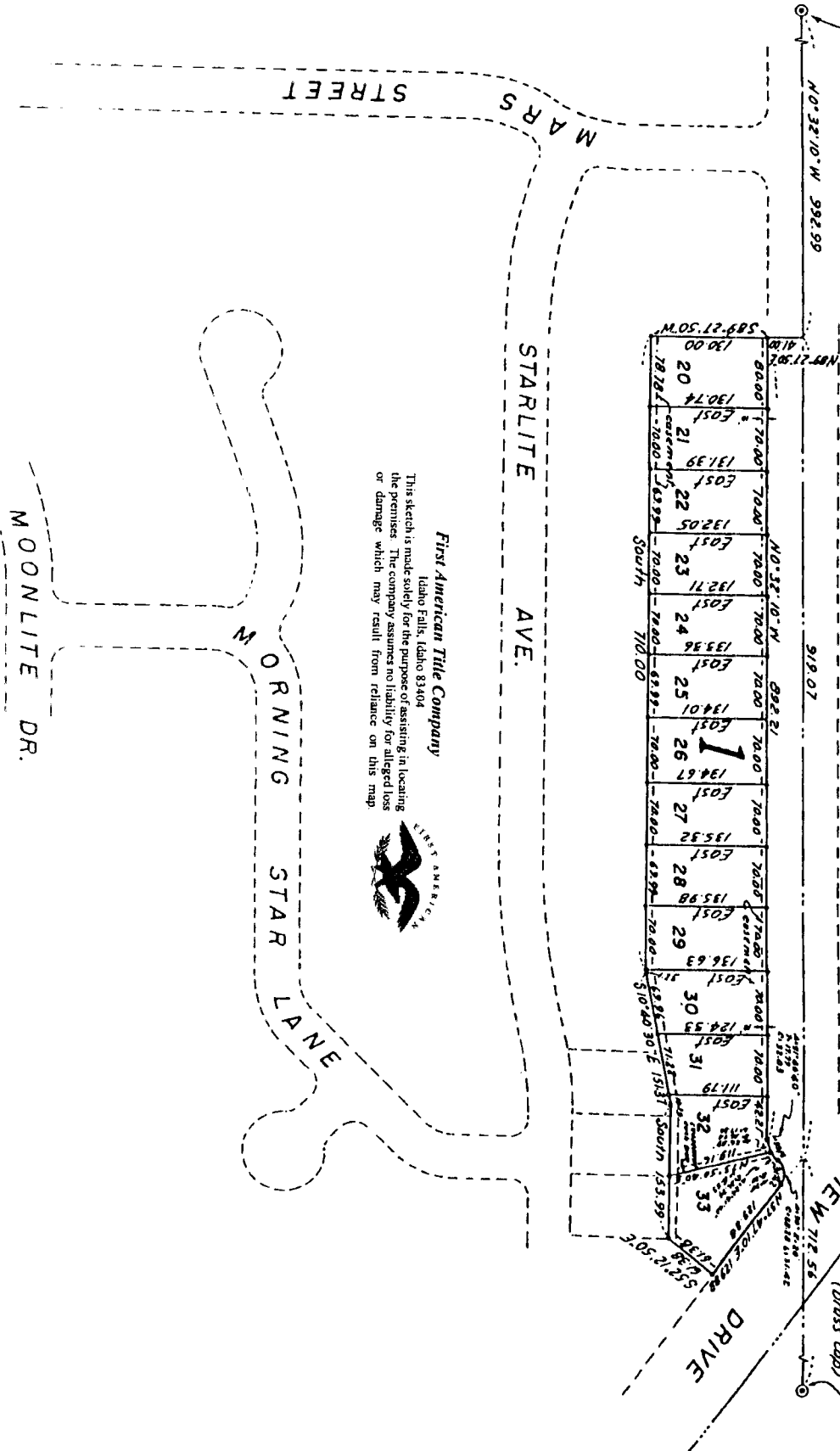


# ESQUIRE ACRES SUBDIVISION

DIVISION NO. 3  
 BONNEVILLE COUNTY, IDAHO  
 PART OF  
 W/2 OF SW 1/4 SECTION 14 T2N R37E8M

SW CORNER SEC. 14  
 T2N, R37E8M.  
 (BROSS COP.)

WEST 1/4 COR.  
 SEC. 14 T2N,  
 R37E8M.  
 (BROSS COP.)



**First American Title Company**  
 Idaho Falls, Idaho 83404

This sketch is made solely for the purpose of assisting in locating the premises. The company assumes no liability for alleged loss or damage which may result from reliance on this map.

