

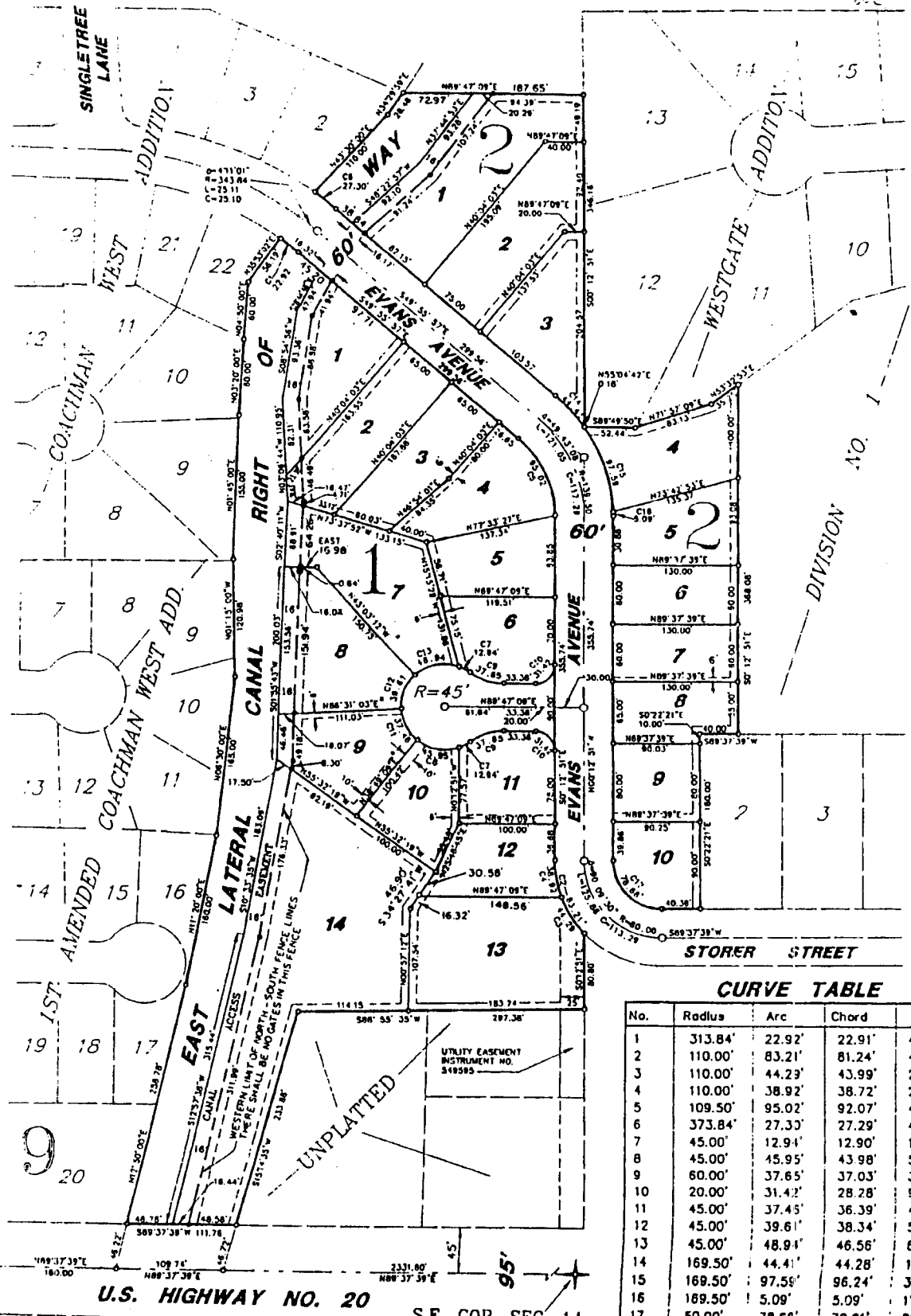
EVANS ADDITION

(Including a replat of Lot 1, Block 5, Coachman West Addition,
and a replat of Lots 1, 7 and 8, Block 2, Westgate Addition, Division No. 1)
TO THE CITY OF IDAHO FALLS, BONNEVILLE COUNTY, IDAHO
PART OF THE S.W. 1/4 OF THE S.W. 1/4 OF SEC. 14, T.2N, R.37E.B.M.



First American Title Company
Idaho Falls, Idaho 83404
This sketch is made solely for the purpose of assisting in locating the premises. The company assumes no liability for alleged loss or damage which may result from reliance on this map.

SOUTH 1/4 COR. SEC. 14,
T. 2 N., R. 37 E.B.M.
(CITY MONUMENT)



U.S. HIGHWAY NO. 20

S.E. COR. SEC. 14,
T. 2 N., R. 37 E.B.M.
(CITY MONUMENT)

CURVE TABLE

No.	Radius	Arc	Chord	Delta
1	313.84'	22.92'	22.91'	471°01'
2	110.00'	83.21'	81.24'	43°20'38"
3	110.00'	44.29'	43.99'	23°04'08"
4	110.00'	38.92'	38.72'	20°28'29"
5	109.50'	95.02'	92.07'	49°43'08"
6	373.84'	27.33'	27.29'	471°01'
7	45.00'	12.94'	12.90'	16°28'46"
8	45.00'	45.95'	43.98'	58°30'17"
9	60.00'	37.65'	37.03'	35°57'02"
10	20.00'	31.42'	28.28'	90°00'00"
11	45.00'	37.45'	36.39'	47°41'54"
12	45.00'	39.61'	38.34'	50°25'45"
13	45.00'	48.94'	46.56'	62°18'37"
14	169.50'	44.41'	44.28'	15°00'39"
15	169.50'	97.59'	96.24'	32°59'13"
16	169.50'	5.09'	5.09'	1°43'14"
17	50.00'	78.68'	70.81'	90°09'30"