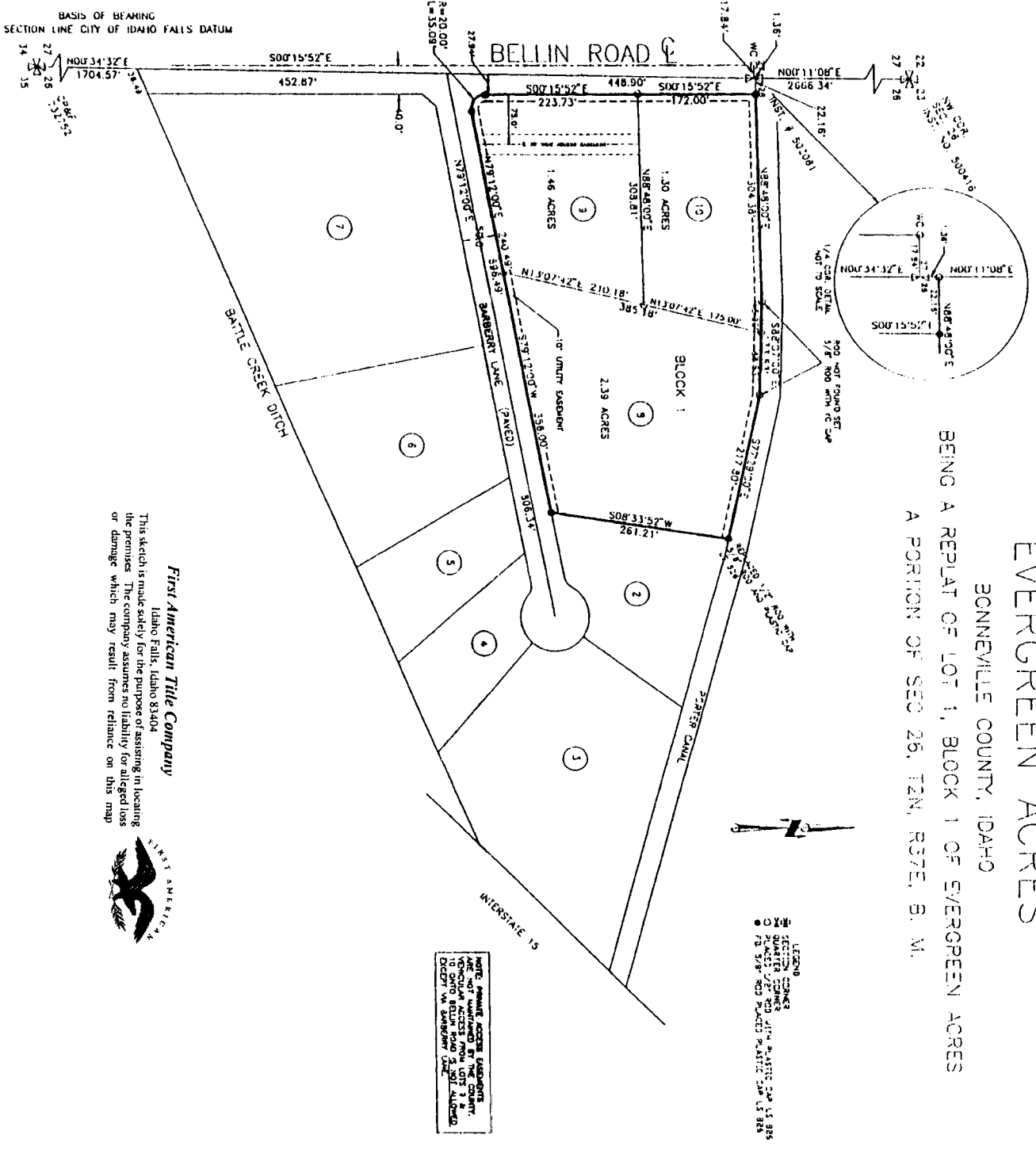


FIRST AMENDED PLAT OF
EVERGREEN ACRES
 BONNEMILLE COUNTY, IDAHO

BEING A REPLAT OF LOT 1, BLOCK 1 OF EVERGREEN ACRES
 A PORTION OF SEC 26, T2N, R37E, S. 1M.



First American Tile Company
 Idaho Falls, Idaho 83404

This sketch is made solely for the purpose of assisting in locating the premises. The company assumes no liability for alleged loss or damage which may result from reliance on this map.



BASIS OF BEARING
 SECTION LINE CITY OF IDAHO FALLS DATUM