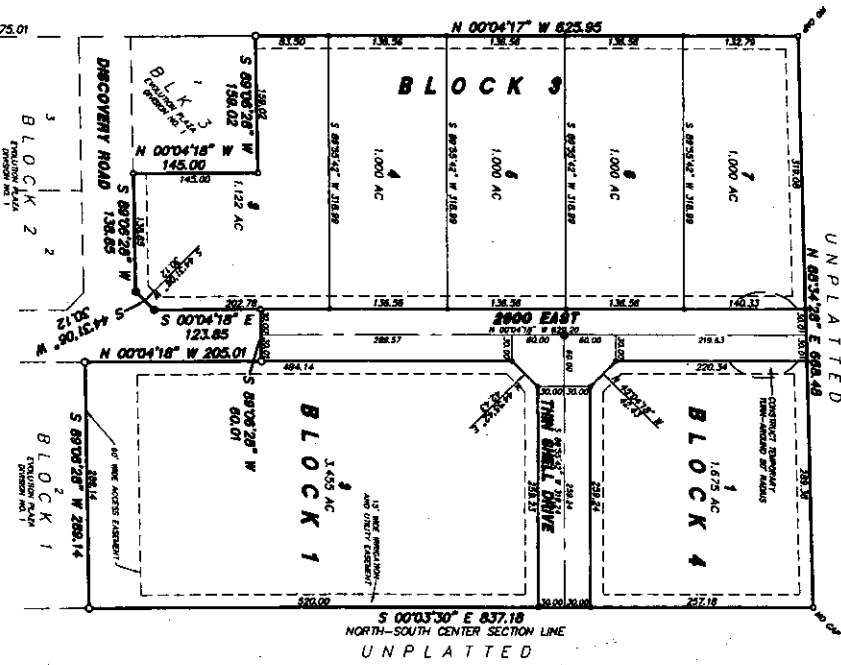


# EVOLUTION PLAZA

## DIVISION NO. 2

### BONNEVILLE COUNTY, IDAHO

BEING PART OF THE S.W. 1/4 OF SECTION 34, T5N, R36E, B1M,  
INCLUDING A REPLAT OF LOT 2 BLOCK 2, EVOLUTION PLAZA, DIVISION NO. 1  
UNPLATTED



### LEGEND & NOTES

- 3/8" x 3/8" Steel rebar set with plastic cap stamped L.S. 8795
  - 1/2" x 2 1/2" Steel rebar set with plastic cap stamped L.S. 8795
  - Steel survey nail
  - 3/8" Steel rebar hand with caps stamped L.S. 8795
  - 1/2" Steel rebar hand with caps stamped L.S. 8795 unless noted otherwise.
- A Riprap foot with Public Utility Equipment is hereby granted along all road frontages within each lot. All other public utility easements are shown here unless noted otherwise.
- The plan contains 1 dot, (1.47 acre average lot size)

Bonneville County will not maintain roads until approved by County Statisticians and officially approved and accepted. Change sheets (pavement, grade, drainage and sidewalk) approvals will be constructed and maintained with the original cross-sections as shown on the approved improvement drawings on file in the Bonneville County Public Works Department and Mountain River Engineers.

Utilities shall have the right to install, maintain and operate their equipment above and below ground and at other needed locations within the Public Utility Equipment (PUE) easement on the plan map or may be necessary or desirable in the future. The utility easement shall be shown on the approved improvement drawings on file in the Bonneville County Public Works Department and Mountain River Engineers. The utility owner shall be responsible for the removal of all structures within the PUE of the lot owner's easement, or the utility may remove such structures at the lot owner's expense. All lot lines may vary in accordance with the PUE shown within the PUE or any other disturbance which interferes with the use of the PUE without the prior written approval of the utility owner as shown in the PUE.

All buildings shall be set back a minimum 30 feet from all road Right-of-Way lines. Lots shown on this plan are included in a lighting district and will be assessed for the operation and maintenance costs.

BRASS CAP  
SECTION 34  
CITY OF IDAHO FALLS  
INSTR. No. 751102

SECTION LINE (BASED ON RECORD)  
CITY OF IDAHO FALLS DIVISION NO. 2004

ALUMINUM CAP  
SECTION 34  
CITY OF IDAHO FALLS  
INSTR. No. 781970