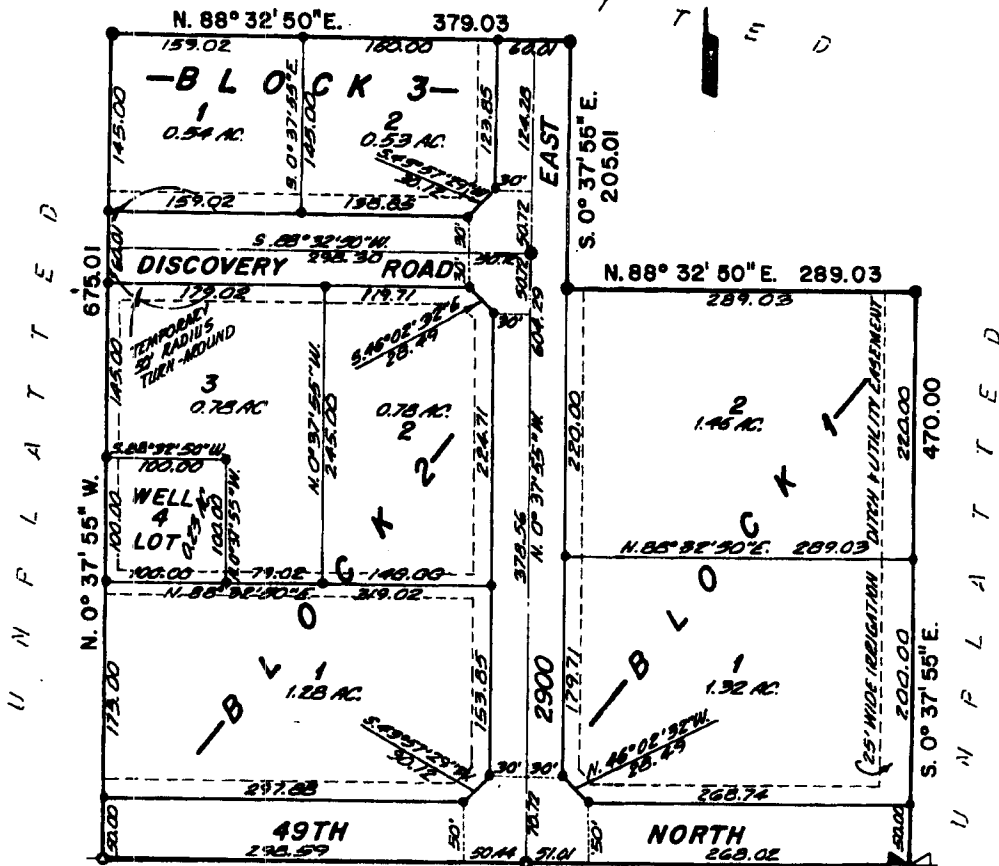


EVOLUTION PLAZA DIVISION NO. 1 BONNEVILLE COUNTY, IDAHO

BEING PART OF THE S.E. 1/4 SW. 1/4 SECTION 34, T. 3 N. R. 38 E. B.M.

NOTE:
The developer hereby reserves areas North of Lots 1 and 2, Block 3, and/or Lot 2, Block 1 of adequate size as required for septic systems and leach fields for the smaller lots within this division. **EASEMENTS WILL BE WRITTEN AS REQUIRED.**



SECTION LINE - BASIS OF BEARINGS (DEEDS)
CITY OF IDAHO FALLS DATUM - N. 89° 02' 47" E. 2645.24

FOUND ALLUMINUM CAP
S. 1/4 CORNER SEC. 34
T. 3 N. R. 38 E. B.M.
L.S. 17 BY L.S. 827
INST. NO. 781975

LEGEND & NOTES

- 5/8" x 30" Steel Re-bar set with plastic cap stamped L.S. 8785
- 1/2" x 24" Steel Re-bar set with plastic cap stamped L.S. 8785
- Survey nail set with washer stamped L.S. 8785

--- A fifteen foot wide Utility Easement is hereby granted along all road frontages within each lot.
All other easements are 20.00 foot wide unless otherwise noted.

Direct access onto 49th North from Lot 1, Block 1 and Lot 1, Block 2
IS NOT ALLOWED.

This division contains 8 lots. (0.87 acre average lot size.)

Bonneville County will not maintain roads until improved to County Standards and officially approved and accepted.

Private approaches shall be constructed as shown on the approved Improvement Drawings on file at the offices of the County Engineer and Mountain River, Inc. and Drainside Swales shall be maintained by the lot owner.

LOTS ON THIS PLAT ARE INCLUDED IN A LIGHTNING DISTRICT AND SHALL BE ASSESSED FOR THE OPERATION AND MAINTENANCE COSTS

First American Title Company
Idaho Falls, Idaho 83404

This sketch is made solely for the purpose of assisting in locating the premises. The company assumes no liability for alleged loss or damage which may result from reliance on this map.

