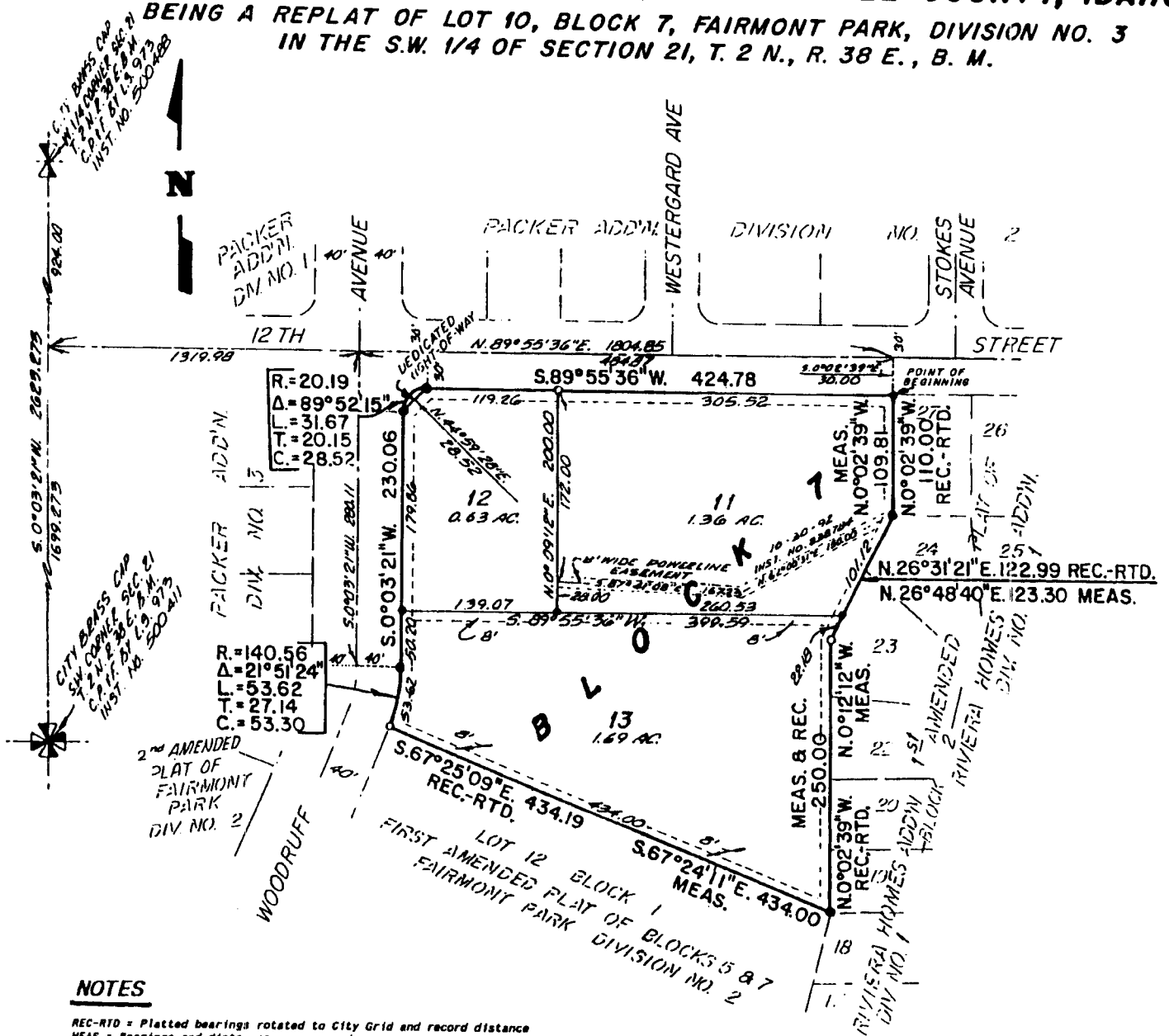


FIRST AMENDED PLAT OF FAIRMONT PARK ADDITION DIVISION NO. 3

**TO THE CITY OF IDAHO FALLS, BONNEVILLE COUNTY, IDAHO
BEING A REPLAT OF LOT 10, BLOCK 7, FAIRMONT PARK, DIVISION NO. 3
IN THE S.W. 1/4 OF SECTION 21, T. 2 N., R. 38 E., B. M.**



NOTES

REC-RTD = Platted bearings rotated to City Grid and record distance
 MEAS = Bearings and distances as measured

- Denotes 5/8" x 30" Steel Re-bar set with plastic cap stamped L.S. 827
- Denotes 1/2" x 24" Steel Re-bar set with plastic cap stamped L.S. 827
- Denotes 1/2" Steel Re-bar found with no plastic cap

----- A Ten foot wide Utility Easement is hereby granted along all road frontages within each lot. All other easements are Ten foot wide unless otherwise noted.

First American Title Company

Idaho Falls, Idaho 83404

This sketch is made solely for the purpose of assisting in locating the premises. The company assumes no liability for alleged loss or damage which may result from reliance on this map.

