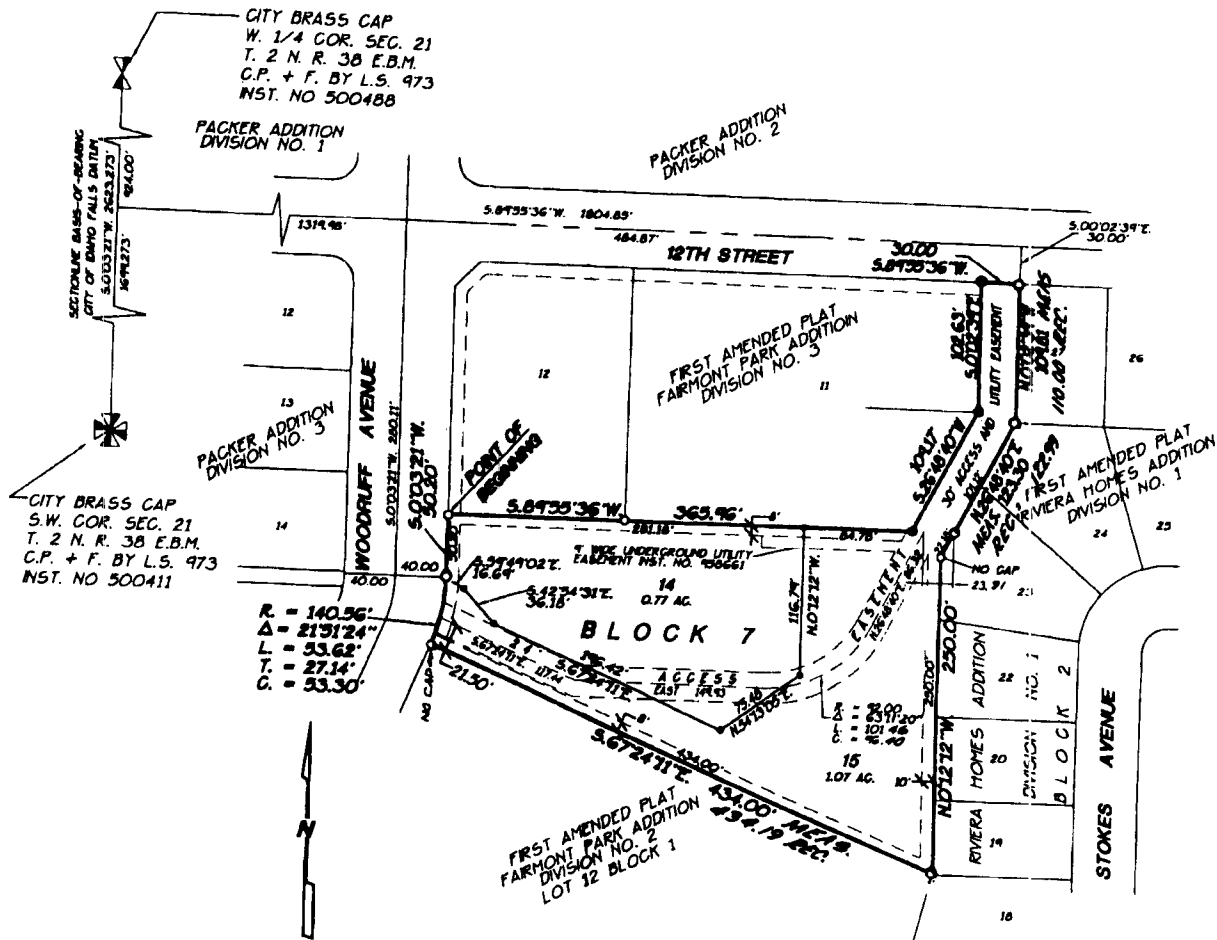


SECOND AMENDED PLAT OF FAIRMONT PARK ADDITION DIVISION NO. 3

TO THE CITY OF IDAHO FALLS, BONNEVILLE COUNTY, IDAHO
BEING A REPLAT OF LOT 13, AND A PART OF LOT 11, BLOCK 7 FIRST AMENDED PLAT OF
FAIRMONT PARK ADDITION, DIVISION NO. 3 IN THE S.W. 1/4 OF SECTION 21, T.2N R.38E. B.M.



LEGEND & NOTES

- 5/8" x 30" Steel Re-bar set with plastic cap stamped I.S.8795
 - 1/2" x 24" Steel Re-bar set with plastic cap stamped L.S.8795
 - 1/2" Steel Re-bar found with caps stamped L.S.827 unless noted otherwise
 - 5/8" Steel Re-bar found with caps stamped L.S.827 unless noted otherwise
- A Ten foot wide Utility Easement is hereby granted along all road frontages within each lot.
All other easements are Eight foot wide unless otherwise noted.

First American Title Company

Idaho Falls, Idaho 83404

This sketch is made solely for the purpose of assisting in locating the premises. The company assumes no liability for alleged loss or damage which may result from reliance on this map.

