

# FAIRWAY ESTATES SUBDIVISION

## DIVISION NO. 13

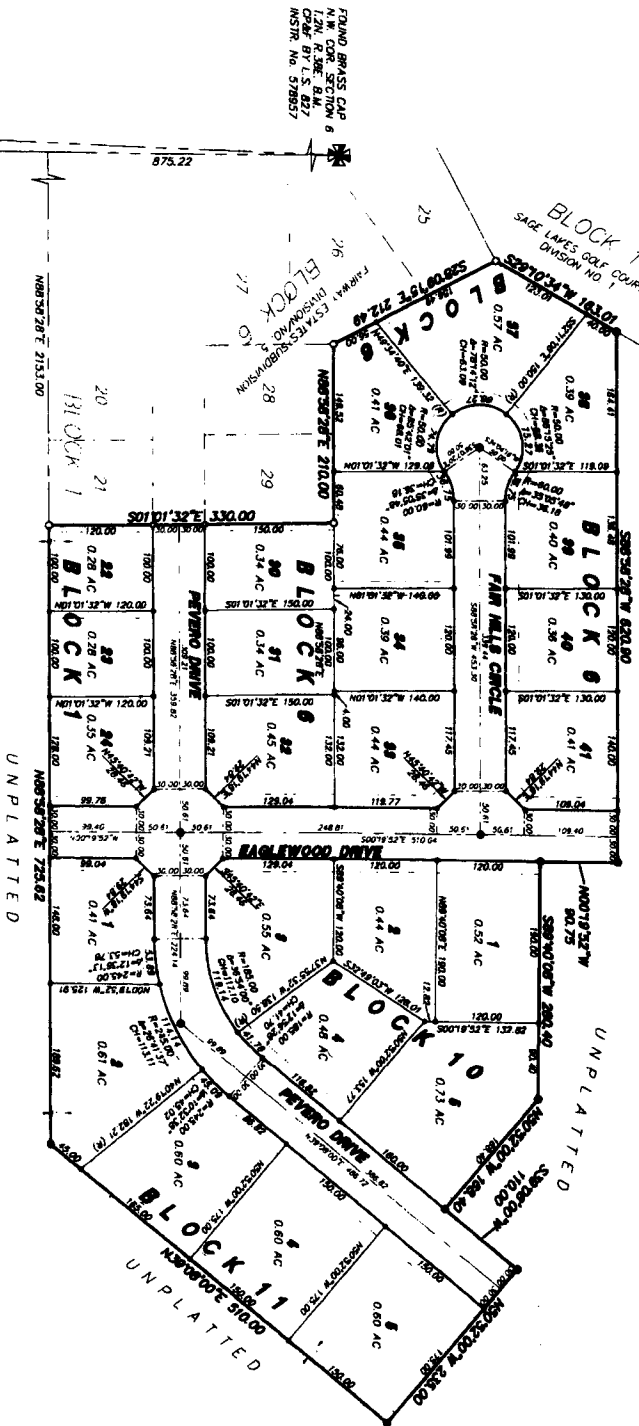
### AN ADDITION TO THE CITY OF DAHO FALLS, BONNEVILLE COUNTY, IDAHO

#### BEING PART OF GOVERNMENT LOTS 2 AND 3 OF SECTION 6, T2N, R36E, B1M

First American Title Company  
 Idaho Falls, Idaho 83404

While this is a photographic reproduction of the recorded plat, the Company assumes no liability for variations, if any, with a re-survey.

UNPLATTED



#### LEGEND & NOTES

- 3/4" x 3/4" Show the lot with project (top) approved (S, R, T, S)
  - 1/2" x 2/4" Show the lot with project (top) approved (S, R, T, S)
  - 3/4" Show the lot with project (top) approved (S, R, T, S)
  - 1/2" Show the lot with project (top) approved (S, R, T, S)
- A Note: This subdivision is being granted along all four boundaries when such is shown otherwise.

SECTION REFERENCE LINE  
 CITY OF DAHO FALLS DATUM

SECTION LINE  
 500°09'31.4" W 2418.96  
 1307.86

FOUND ALUMINUM CAP  
 W/1/4 COR. SECTION 6  
 T2N, R36E, B1M  
 INSTR. NO. 537203

FOUND ALUMINUM CAP  
 W/1/4 COR. SECTION 6  
 T2N, R36E, B1M  
 INSTR. NO. 538821

FOUND BRASS CAP  
 N.W. COR. SECTION 6  
 T2N, R36E, B1M  
 INSTR. NO. 578857