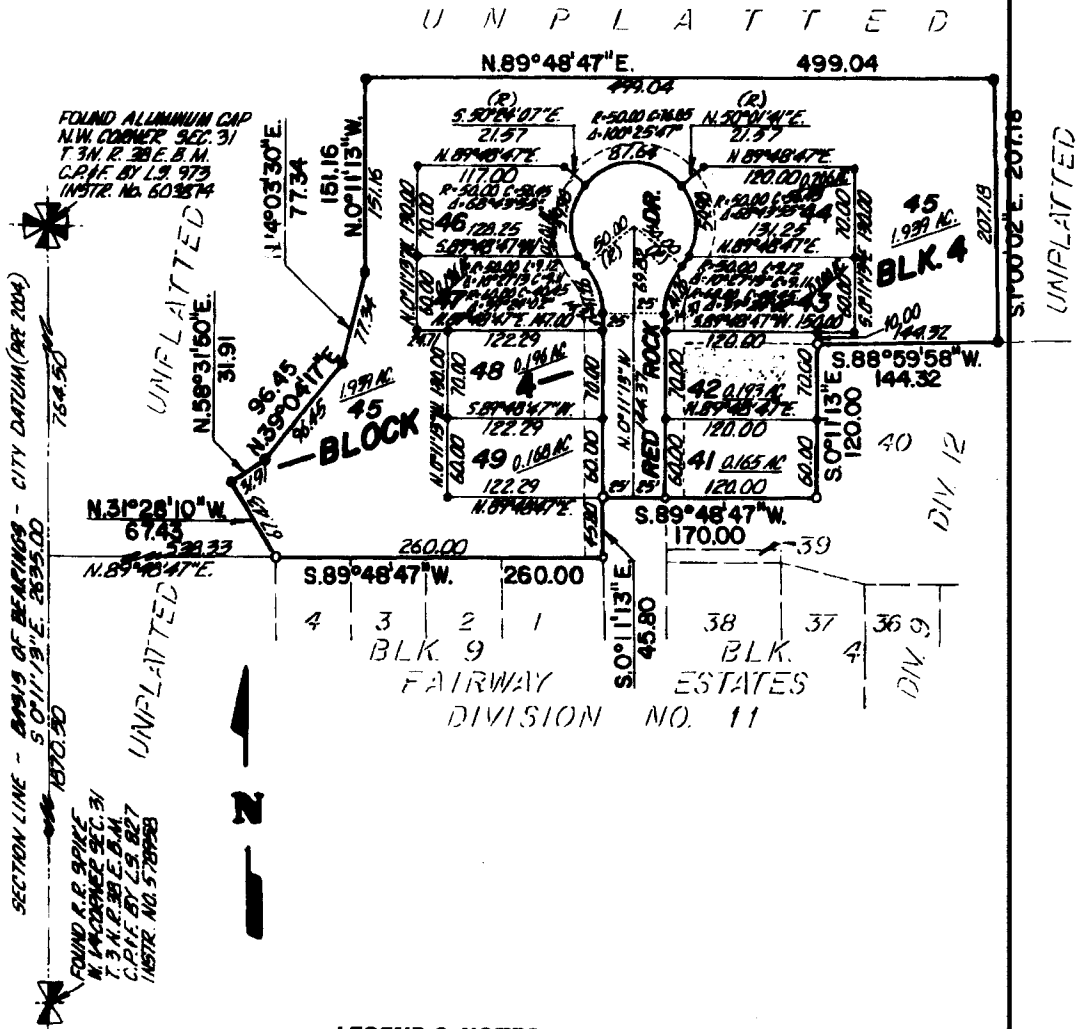


FAIRWAY ESTATES SUBDIVISION DIVISION NO. 14

AN ADDITION TO THE CITY OF IDAHO FALLS, BONNEVILLE COUNTY, IDAHO

BEING PART OF THE N.W. 1/4 N.W. 1/4 SECTION 31 T. 3 N. R. 38 E. B.M.

First American Title Company
Idaho Falls, Idaho 83404
While this is a photographic reproduction of the recorded plat, the Company assumes no liability for variations, if any, with a re-survey.



LEGEND & NOTES

- 5/8" x 30" Steel Re-bar set with plastic cap stamped L.S.8795
- 1/2" x 24" Steel Re-bar set with plastic cap stamped L.S.8795
- 5/8" Steel Re-bar found with cap stamped L.S.8795
- 1/2" Steel Re-bar found with caps stamped L.S.8795

A fifteen foot wide Utility Easement is hereby granted along all road frontages within each lot.
All other utility easements are ten feet wide unless shown otherwise.