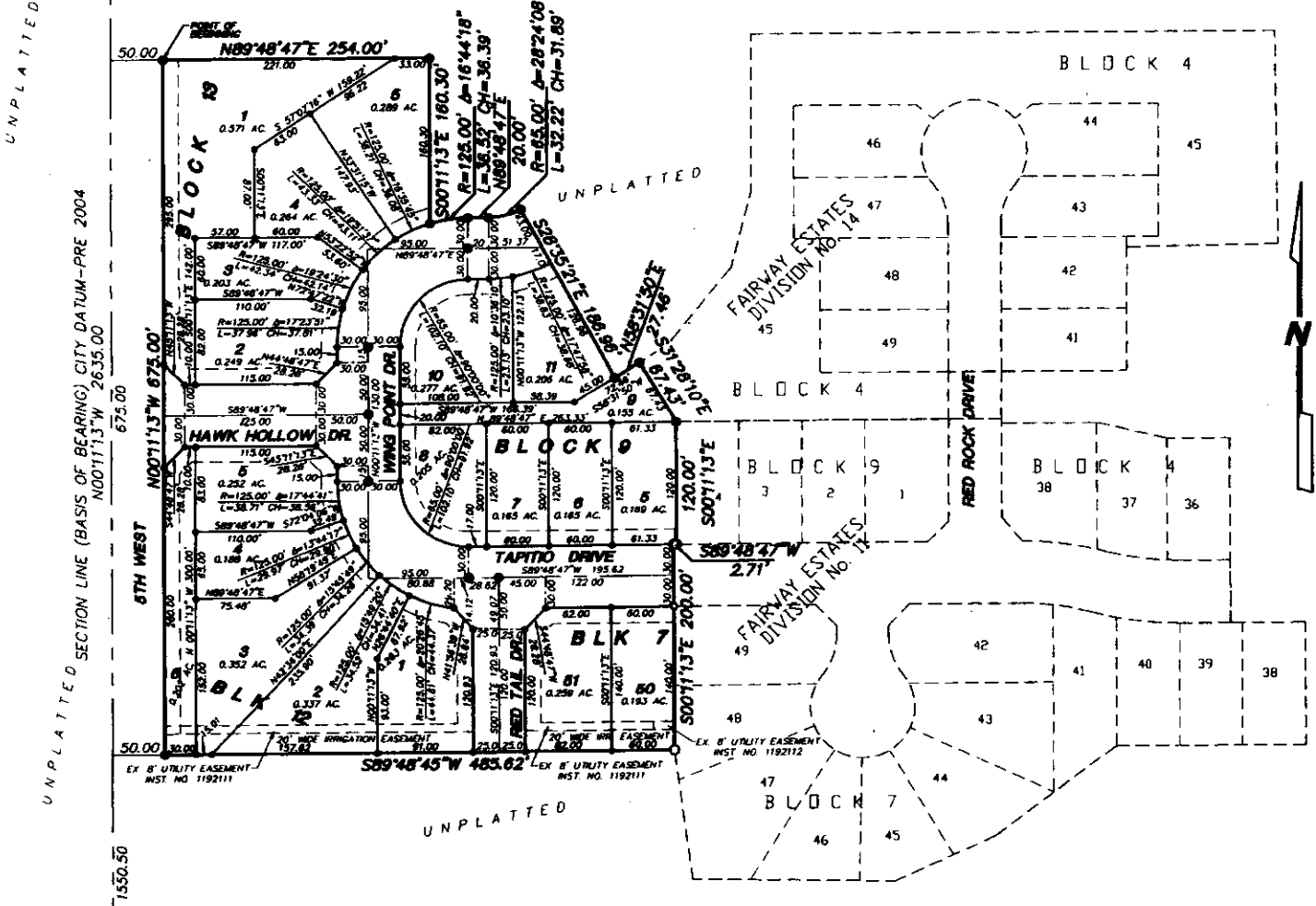


FOUND ALUMINUM CAP
N.W. COR. SECTION 31
T.3N. R.38E. B.M.
CP&F BY L.S.973
INSTR. No.603874

FAIRWAY ESTATES SUBDIVISION DIVISION NO. 15

AN ADDITION TO THE CITY OF IDAHO FALLS
BONNEVILLE COUNTY, IDAHO
BEING PART OF THE N.W. 1/4 SECTION 31
T.3N. R.38 E. BOISE MERIDIAN



UNPLATTED SECTION LINE (BASIS OF BEARING) CITY DATUM-PRE 2004
N007113°W 2635.00'
675.00'
1550.50'

FOUND RAILROAD SPIKE
W. 1/4 COR. SECTION 31
T.3N. R.38E. B.M.
CP&F BY L.S.827
INSTR. No.578958

First American Title Company
Idaho Falls, Id 83404

While this is a photographic reproduction of the recorded plat, the company assumes no liability for variations, if any, with a re-survey.

LEGEND & NOTES

- 5/8" x 3/8" Steel Re-bar set with plastic cap stamped L.S.8795
 - 1/2" x 24" Steel Re-bar set with plastic cap stamped L.S.8795
 - 5/8" Steel Re-bar found with cap stamped L.S.8795
 - 1/2" Steel Re-bar found with caps stamped L.S.8795
- A fifteen foot wide Utility Easement is hereby granted along all road frontages within each lot. All other utility easements are ten foot wide unless shown otherwise