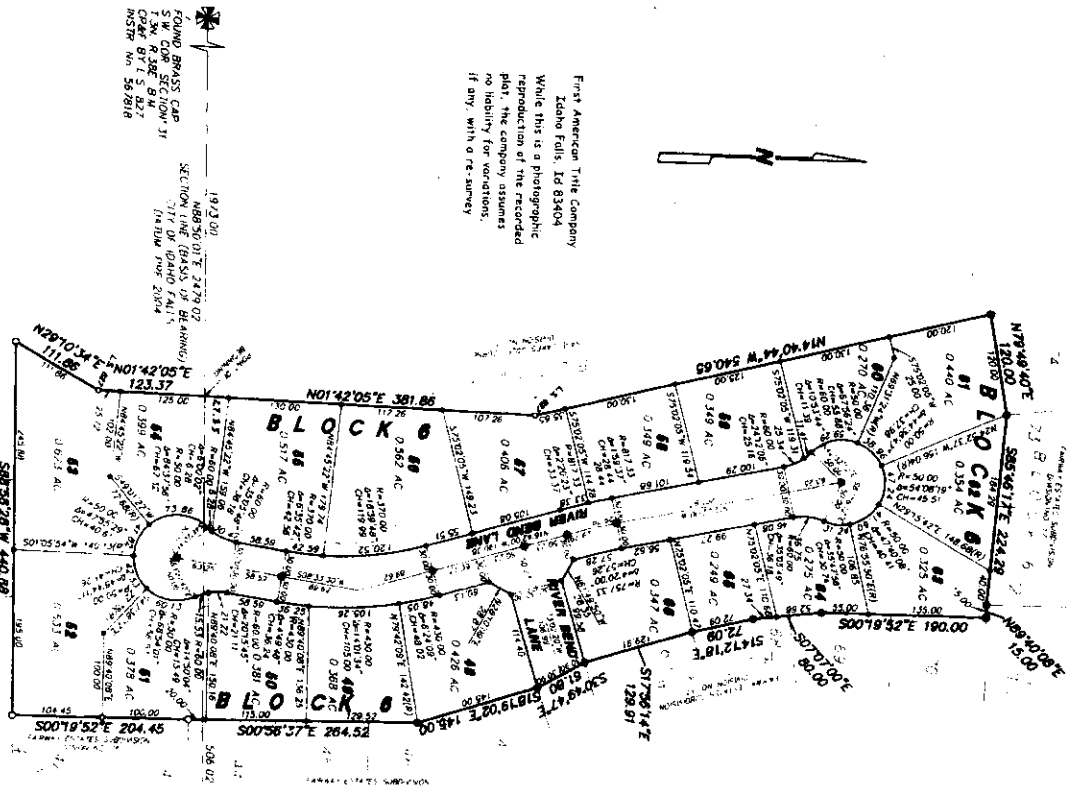
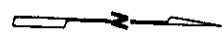


FAIRWAY ESTATES SUBDIVISION

AN ADDITION TO THE CITY OF IDAHO FALLS, BONNEVILLE COUNTY, IDAHO

BEING PART OF THE EAST 1/2 OF THE SOUTHWEST 1/4 OF SECTION 31, T.34N AND
PART OF THE NORTHEAST 1/4 OF THE NORTHWEST 1/4 OF SECTION 6, T.34N, R.39E, B.14E

First American Title Company
 Idaho Falls, ID 83404
 While this is a photographic
 reproduction of the recorded
 plat, the company assumes
 no liability for variations,
 if any, with a re-survey.



FOUND BRASS CAP
 5 1/4 COR SECTION 31
 T.34N, R.39E, B.14E
 CORNER BY T. S. 827
 INSTR. NO. 587816

FOUND ALUMINUM CAP
 5 1/4 COR SECTION 31
 T.34N, R.39E, B.14E
 CORNER BY T. S. 827
 INSTR. NO. 587817

LEGEND & NOTES

- 3/4\"/>