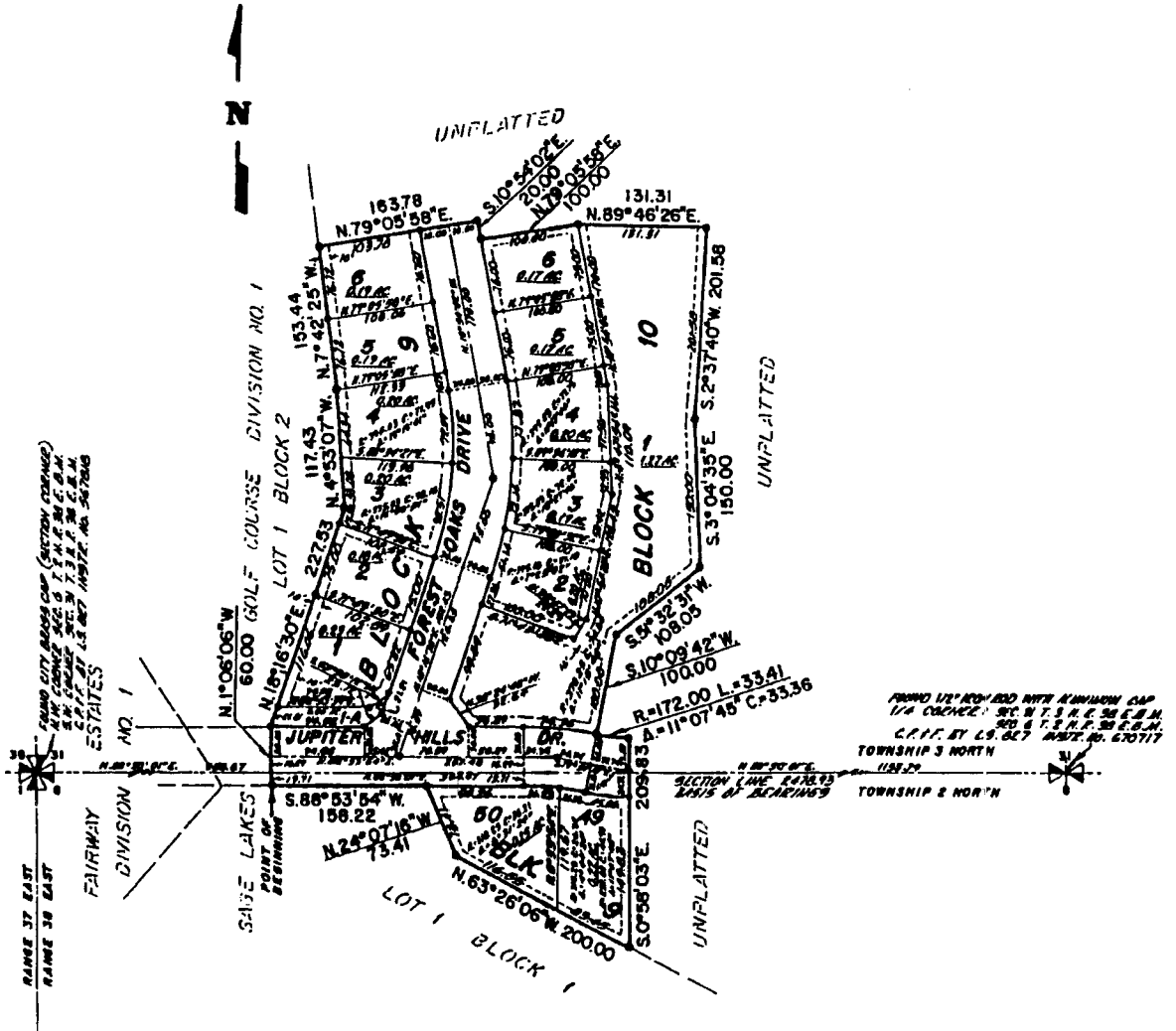


FAIRWAY ESTATES SUBDIVISION DIVISION NO. 6

AN ADDITION TO THE CITY OF IDAHO FALLS, BONNEVILLE COUNTY, IDAHO
BEING PART OF THE S.W. 1/4 OF SECTION 31, T. 3 N., R. 38 E., B.M.
AND PART OF THE N.W. 1/4 OF SECTION 6, T. 2 N., R. 38 E., B.M.



LEGEND & NOTES

- 60" x 30" Steel Re-bar set with plastic cap stamped L.S. 807
- 1/2" x 24" Steel Re-bar set with plastic cap stamped L.S. 807
- 5/8" Steel Re-bar found with caps stamped L.S. 807
- 1/2" Steel Re-bar found with caps stamped L.S. 807

----- A Ten foot wide Utility Easement is hereby granted along all road frontages within each lot.
All other easements are Eight feet wide unless otherwise noted.

Lot 1, Block 10 and Lot 1-A, Block 8 are open space lots to be owned and maintained by the Fairway Estates Subdivision Homeowners' Association.

First American Title Company

Idaho Falls, Idaho 83404

This sketch is made solely for the purpose of assisting in locating the premises. The company assumes no liability for alleged loss or damage which may result from reliance on this map.

