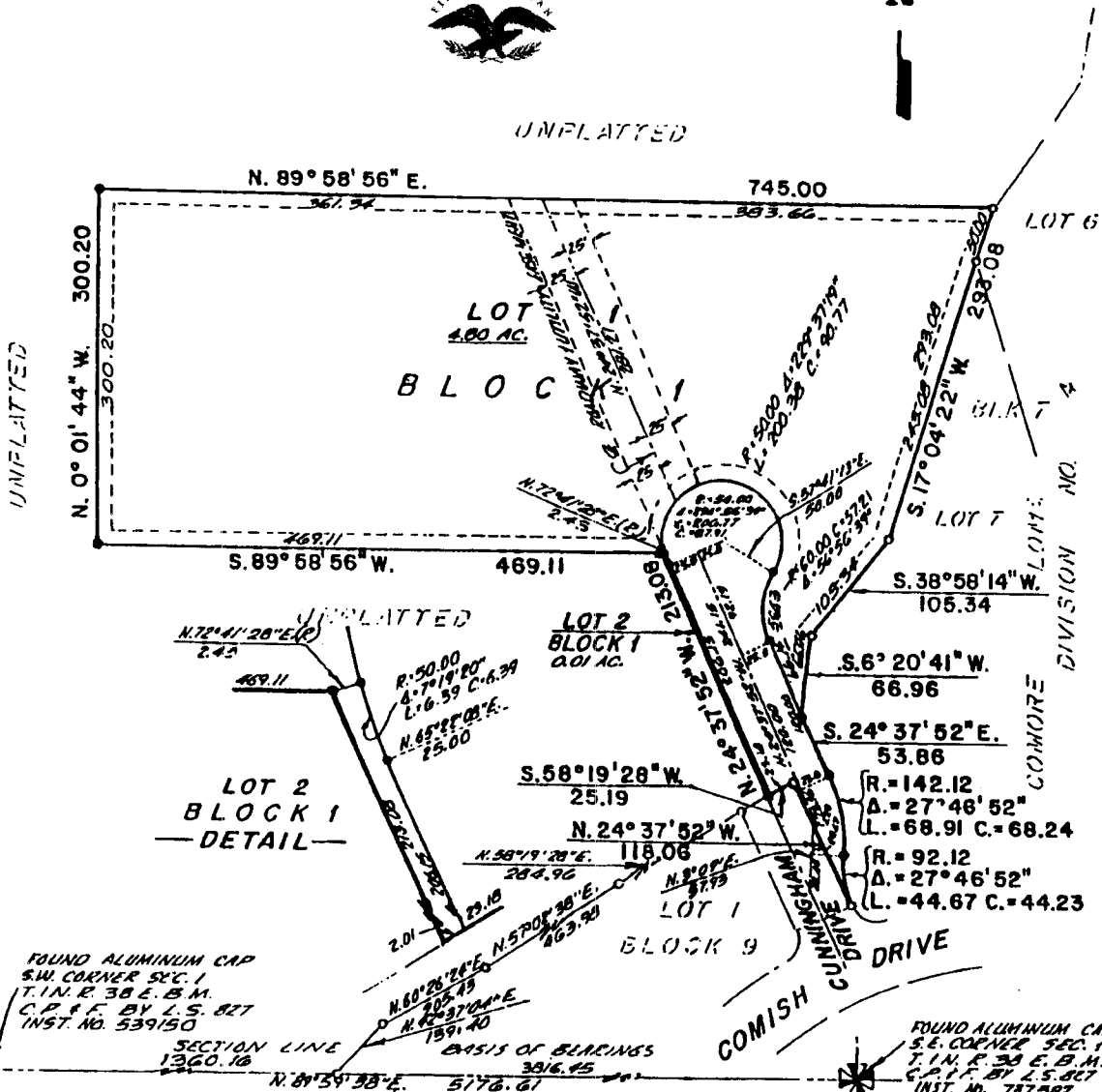


FALCON RIDGE DIVISION NO. 1 BONNEVILLE COUNTY, IDAHO

BEING PART OF THE S.W. 1/4 OF SECTION 1, T. 1 N., R. 38 E., B. M.
WHICH INCLUDES A REPLAT OF PART OF LOT 7, BLOCK 7,
COMORE LOMA, DIVISION NO. 4

First American Title Company
Idaho Falls, Idaho 83404

This sketch is made solely for the purpose of assisting in locating
the premises. The company assumes no liability for alleged loss
or damage which may result from reliance on this map.



LEGEND AND NOTES

- 5/8" x 30" Steel Re-bar set with plastic cap stamped L.S. 827
 - 1/2" x 24" Steel Re-bar set with plastic cap stamped L.S. 827
 - Steel Re-bar found with plastic cap stamped L.S. 827
- A Twelve foot wide Utility & Storm Water Runoff Easement is hereby granted around the perimeter of Lot 1. Other easements are as noted.

Bonneville County will not maintain roads until improved to County Standards and officially approved and accepted.

Private approaches shall be constructed as shown on the approved Improvement Drawings on file at the offices of the County Engineer and Mountain River, Inc. and Drainage Swales shall be maintained by the lot owner

FOUND ALUMINUM CAP
S.W. CORNER SEC. 1
T. 1 N. R. 38 E. B. M.
C.P. & F. BY L.S. 827
INST. NO. 539150

FOUND ALUMINUM CAP
S.E. CORNER SEC. 1
T. 1 N. R. 38 E. B. M.
C.P. & F. BY L.S. 827
INST. NO. 757282