

FALL CREEK SUBDIVISION DIVISION NO. 1

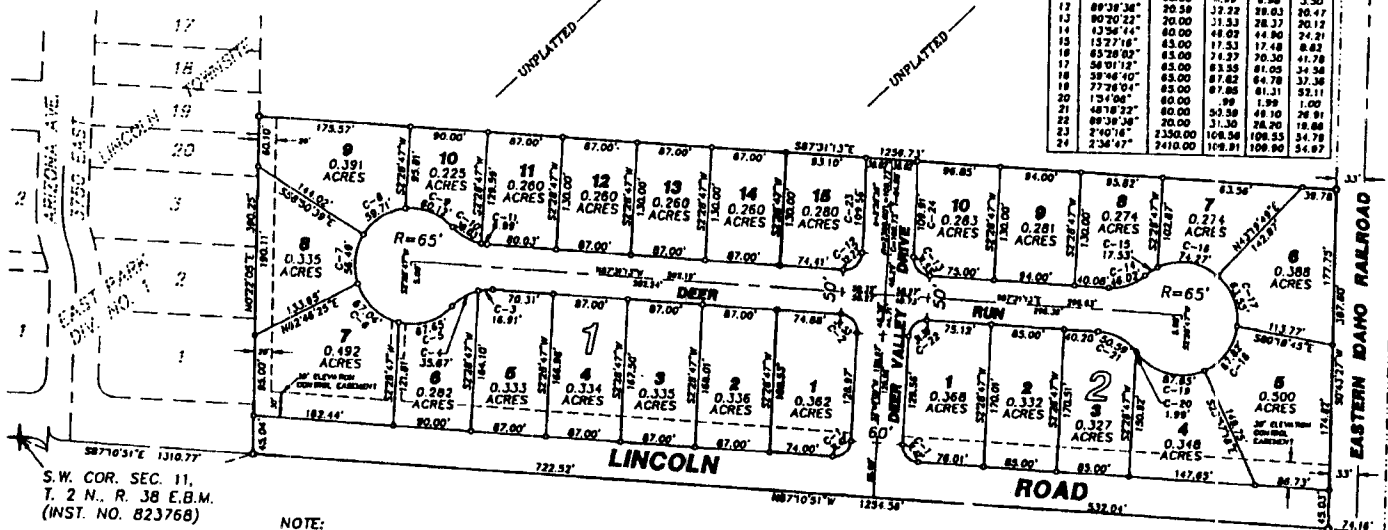
BONNEVILLE COUNTY, IDAHO
PART OF THE SOUTH 1/2 OF THE S.W. 1/4
OF SEC. 11, T. 2 N., R. 38 E.B.M.

NOTES

- Indicates a 1/2" x 24" iron rod placed with a yellow plastic cap marked L.S. 7380.
 - Indicates a 5/8" x 30" iron rod placed with a yellow plastic cap marked L.S. 7380.
 - - - utility easements are 8' through each lot unless otherwise shown.
 - - - a 10' wide utility easement is reserved along the street side of all lots.
 - 1.000 ACRES indicates lot area in acres.
- The County will not maintain roads until constructed to County standards and Officially accepted.

CURVE DATA

NO.	DELTA	R	L	C	T
1	90°00'00"	20.00	11.42	26.28	20.00
2	90°00'22"	20.00	11.53	26.37	20.12
3	180°00'50"	60.00	6.91	18.85	6.91
4	34°03'36"	60.00	5.87	33.14	18.36
5	58°37'47"	65.00	67.85	64.64	37.25
6	39°05'49"	65.00	67.04	64.11	36.85
7	48°17'44"	65.00	58.49	54.73	30.17
8	32°36'10"	65.00	58.71	57.89	37.15
9	52°58'44"	65.00	60.12	58.00	39.41
10	37°18'24"	60.00	39.03	38.35	20.24
11	8°40'30"	60.00	4.99	8.98	3.50
12	89°38'36"	60.00	12.22	28.03	20.47
13	90°00'22"	20.00	11.53	26.37	20.12
14	13°56'44"	60.00	48.02	44.80	24.21
15	15°27'16"	65.00	17.53	17.48	8.82
16	65°28'02"	65.00	16.27	70.30	41.78
17	58°01'12"	65.00	83.55	81.05	34.58
18	58°46'10"	65.00	87.82	84.78	37.38
19	77°28'04"	65.00	67.86	61.31	52.11
20	13°40'08"	60.00	9.99	1.99	1.00
21	48°18'22"	60.00	50.58	49.10	28.91
22	89°38'36"	20.00	11.53	28.20	18.88
23	2°40'18"	2350.00	108.56	108.55	54.78
24	2°38'47"	2410.00	109.91	109.90	54.07



S.W. COR. SEC. 11,
T. 2 N., R. 38 E.B.M.
(INST. NO. 823768)

NOTE:
Lots 1 through 7, Block 1 and Lots
1 through 5, Block 2 will not have
private access onto Lincoln Road.

SOUTH 1/4 COR. SEC. 11,
T. 2 N., R. 38 E.B.M.
(INST. NO. 1123769)

First American Title Company
Idaho Falls, Idaho 83404

This sketch is made solely for the purpose of assisting in locating the premises. The company assumes no liability for alleged loss or damage which may result from reliance on this map.

