

FELT & WAITE ADDITION

To The CITY of AMMON, BONNEVILLE COUNTY, IDAHO
 Part of NE 1/4, NW 1/4 Sec. 34, T.2N., R.38E. B.M.

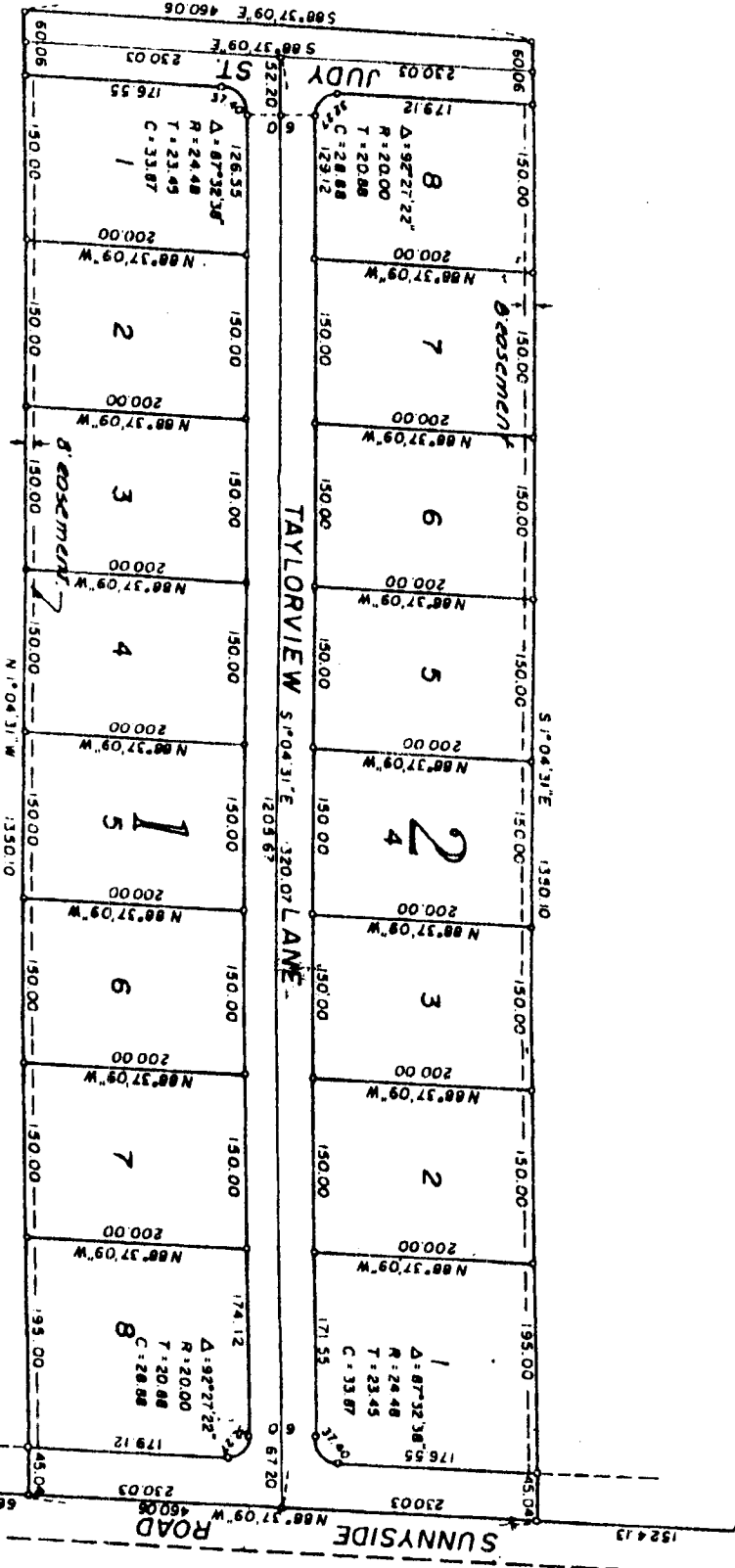
First American Title Company

Idaho Falls, Idaho 83404

This sketch is made solely for the purpose of assisting in locating the premises. The company assumes no liability for alleged loss or damage which may result from reliance on this map.



N.W. Corner
 Sec. 34, T.2N.
 R.38E. B.M.



Note: An easement 8' 10" width is granted for utilities along the street side of all lots.

North 1/4 Cor