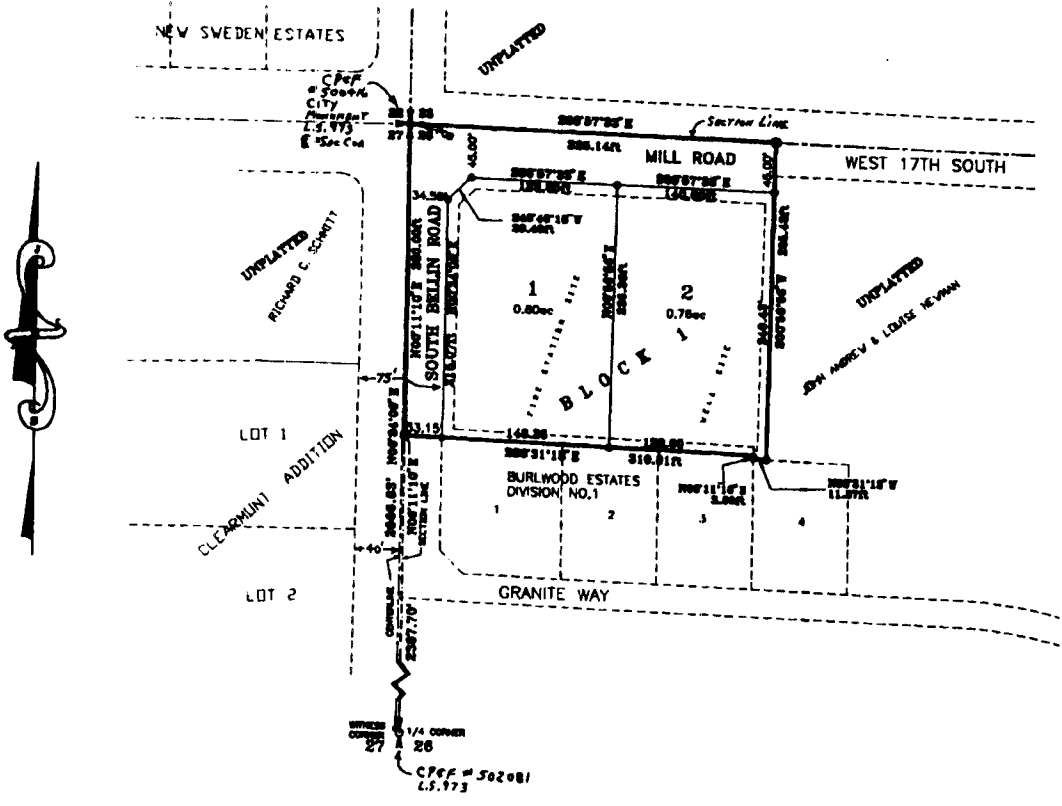


FIRE STATION NO.5 SUBDIVISION

AN ADDITION TO THE CITY OF IDAHO FALLS, BONNEVILLE COUNTY, IDAHO
BEING PART OF THE NW1/4, SECTION 26, T2N, R37E, B.M.



LEGEND

- SECTION CORNER CONTROL
- PLACED 1/8" IRON ROD WITH PLASTI-CAP MARKED P.L.B. 3842
- MONUMENTS FOUND
- MONUMENT TO BE SET AFTER CONSTRUCTION
- UTILITY EASEMENTS ARE 10' WIDE ALONG THE FRONTAGE OF ALL LOTS. SIDE AND REAR YARD EASEMENTS ARE 8' UNLESS OTHERWISE SHOWN.
- POINT OF BEGINNING

First American Title Company

Idaho Falls, Idaho 83404

This sketch is made solely for the purpose of assisting in locating the premises. The company assumes no liability for alleged loss or damage which may result from reliance on this map.

